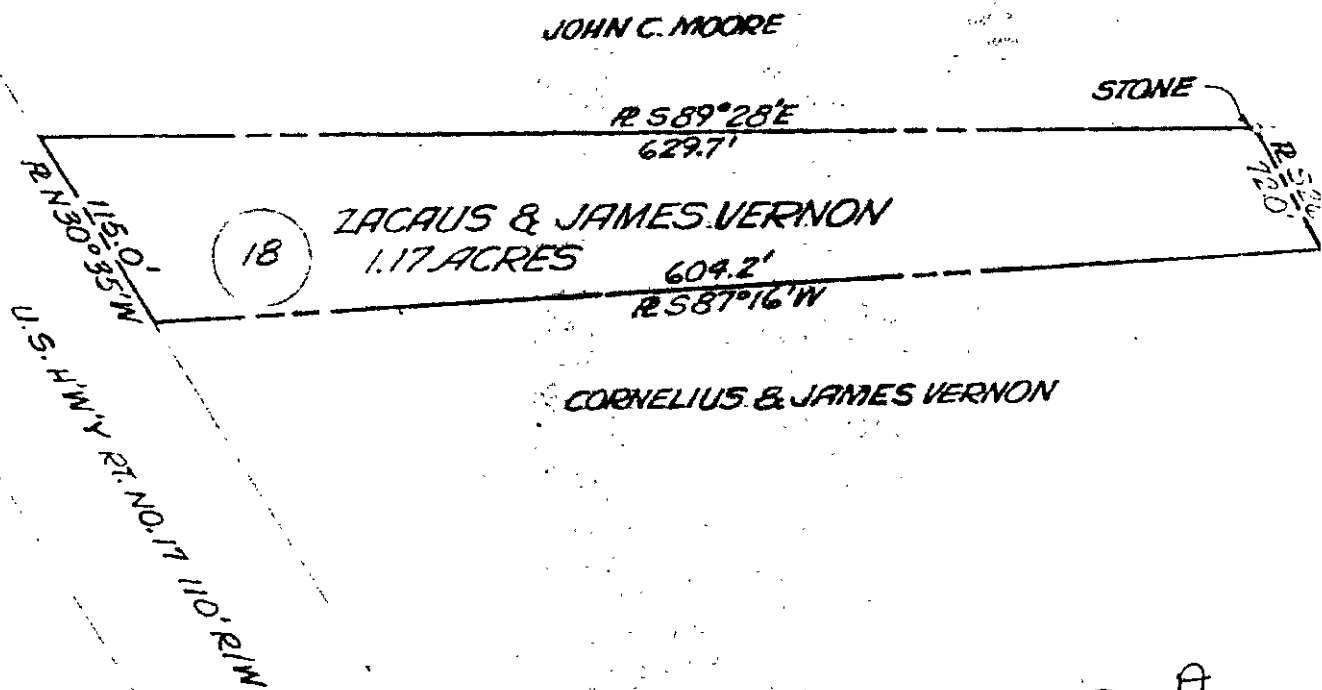


102-419



24F(2) A

VIRGINIA ELECTRIC AND POWER	
CHESTERFIELD-PENINSULA LOOPS TO	
TRANSMISSION LINE	
PLAT TO ACCOMPANY FEE SIMPLE DEED	
ZACAUS & JAMES VERNON	
DISTRICT	COUNTY
GRAFTON	YORK
SCALE: 1 INCH = 100 FT.	NO.
DATE:	SURVEYED BY:
JULY 19, 1955	STONE & WEBSTER