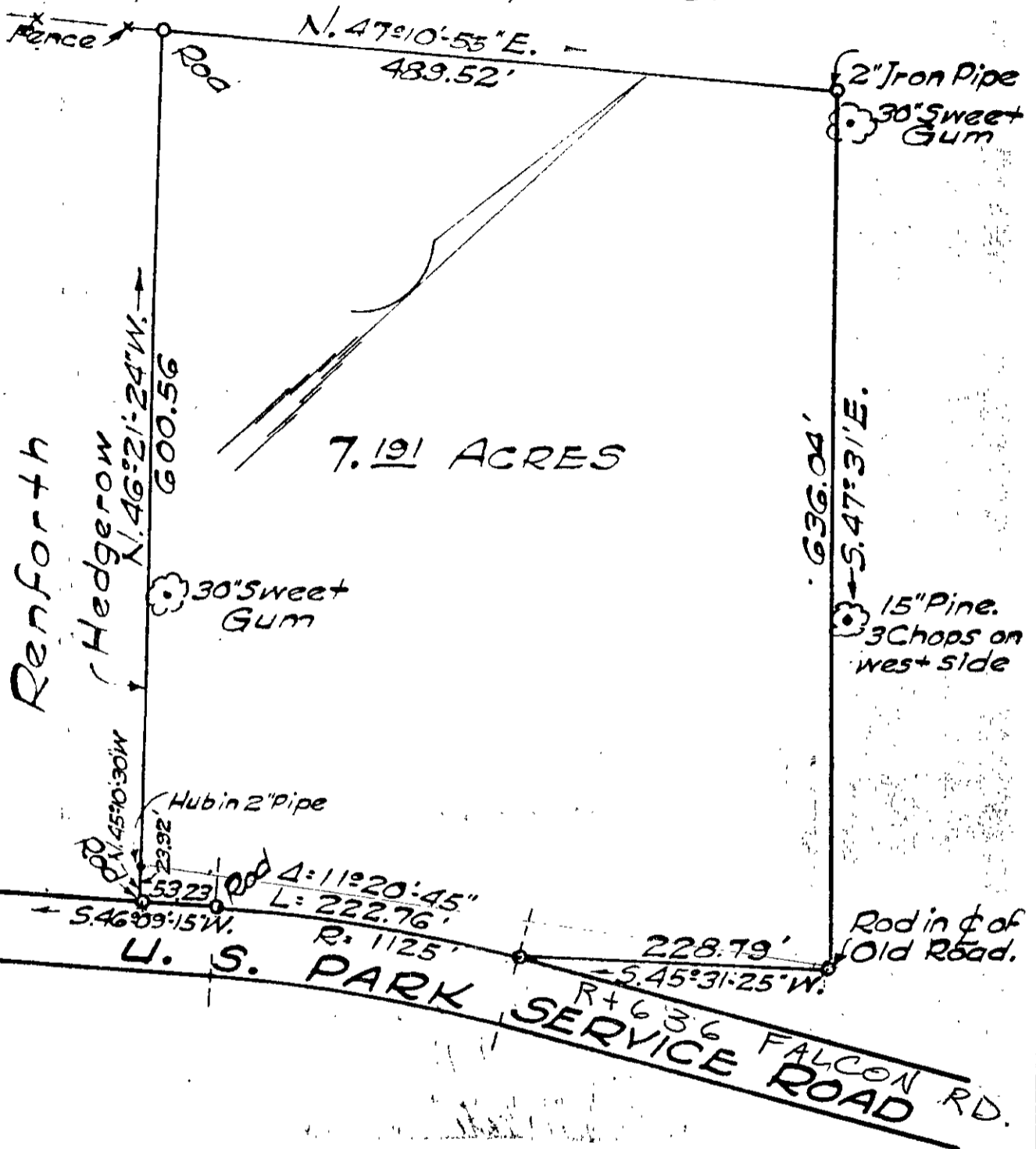


BOOK 147 PAGE 212 York County School

To Yorktown →



Map of 7.191 Acres of Land Situated
 On The North Side of U.S. Park Service
 Road, East of Route 17, York County, Va.
 Belonging To L. R. O'Hara.
 July 14, 1958.

Scale: 1" = 100'

J. K. Timmons
 Civil Engineer
 Richmond, Va.

bb No 207