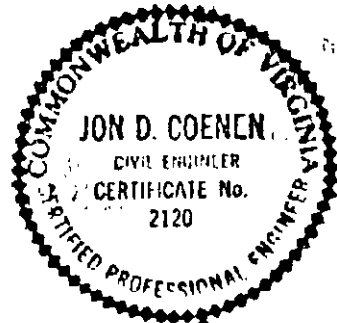
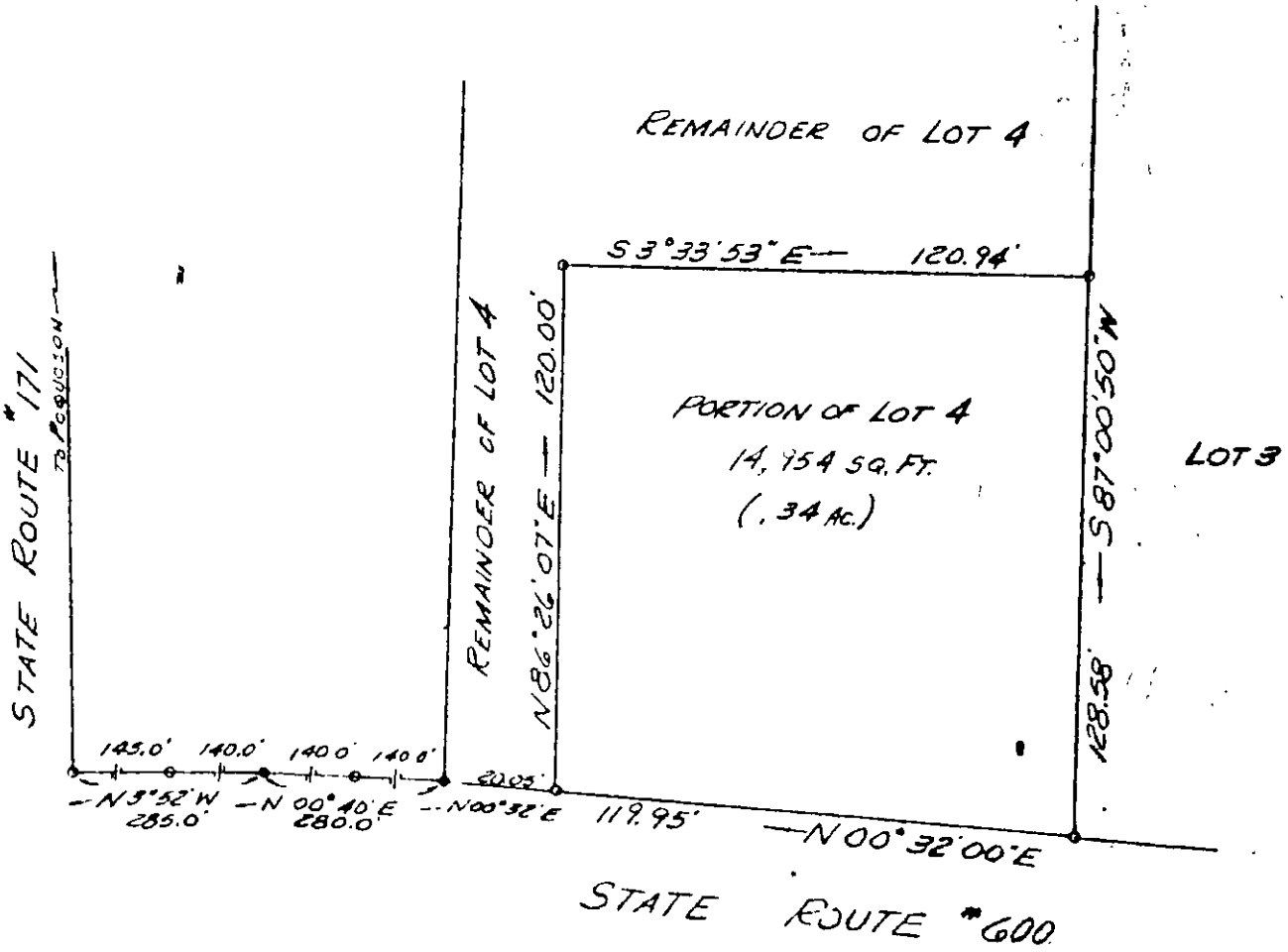


Magnetic



Jon D. Coenen

PLAT OF THE PROPERTY OF
L.L. LONG
PORTION OF LOT 4
W.H. THOMAS EST.
YORK COUNTY
VIRGINIA
COENEN & ASSOCIATES, ENGINEERS
NEWPORT NEWS, VIRGINIA
SCALE: 1" = 40' FEB. 31, 1961

37-C-(3)-1B