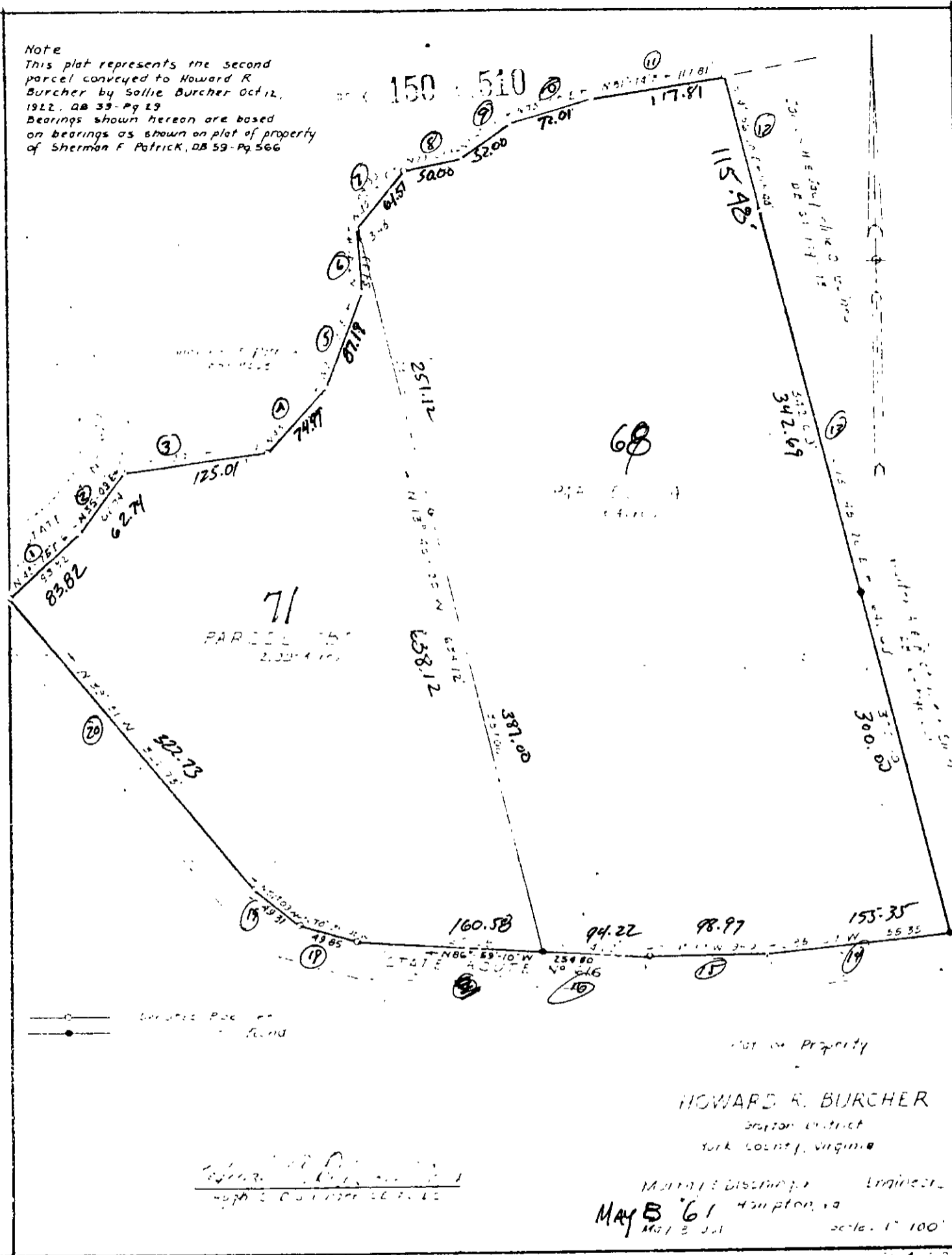


Note
 This plat represents the second
 parcel conveyed to Howard R.
 Burcher by Sallie Burcher Oct 12,
 1922. DB 39-Pg 29
 Bearings shown hereon are based
 on bearings as shown on plat of property
 of Sherman F. Patrick, DB 59-Pg 566



- ① N 48° 25' E
- ② N 35° 09' E
- ③ N 82° 30' E
- ④ N 43° 20' E
- ⑤ N 21° 23' E
- ⑥ N 7° 45' W
- ⑦ N 40° 31' E
- ⑧ N 79° 03' E
- ⑨ N 55° 03' E
- ⑩ N 73° 01' E

- ⑪ N 81° 14' E
- ⑫ S 14° 56' 10" E
- ⑬ S 13° 45' 20" E
- ⑭ S 85° 07' W
- ⑮ S 89° 37' W
- ⑯ N 86° 59' 10" W
- ⑰ N 70° 35' 40" W
- ⑱ N 57° 09' W
- ⑳ N 39° 51' W

30-71 ✓