

INSIDE TRAVERSE 3.96 ACRES  
 OUTSIDE TRAVERSE 0.17 ACRES  
 TOTAL 4.13 ACRES

4.13 ACRES

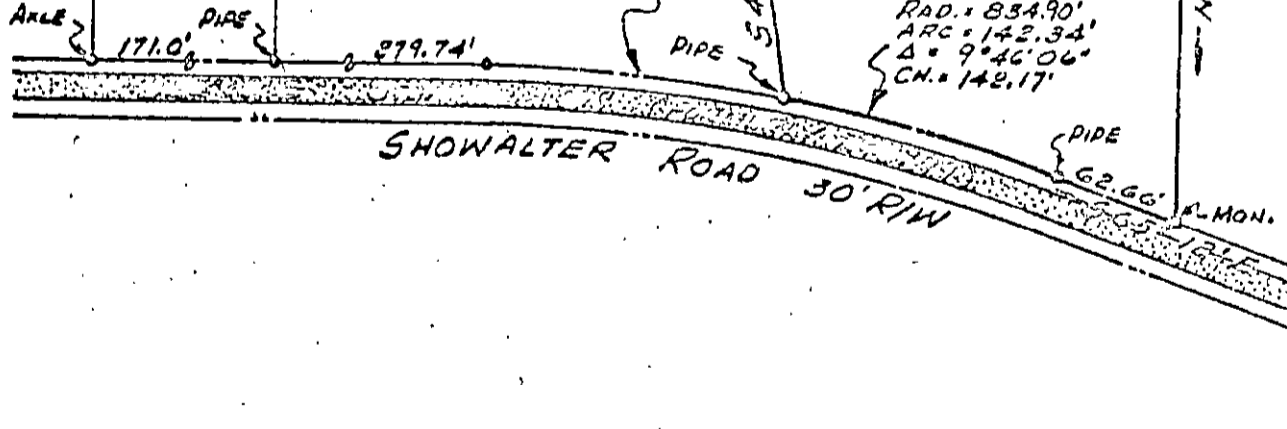
NOW OR FORMERLY  
 SHOWALTER  
 NOW OR FORMERLY  
 W.P. WRENN

PROPERTY OF  
 EVERETT B. DAVIS, JR.  
 & MARY L. DAVIS

NOW OR FORMERLY  
 COUNTY OF YORK

RAD. = 834.90'  
 ARC = 150.55'  
 Δ = 10° 19' 54"  
 CH. = 150.35'

RAD. = 834.90'  
 ARC = 142.34'  
 Δ = 9° 46' 06"  
 CH. = 142.17'



PLAT OF THE PROPERTY  
 MERRILL E. CARR & SYBYL M. CARR  
 4.13 ACRES GRAFTON DISTRICT  
 YORK COUNTY, VIRGINIA

R. F. Pyle  
 R. F. PYLE: Certified Land Surveyor  
 Newport News, Va. 1962  
 Scale: 1" = 100'  
 Feb. 2, 1962