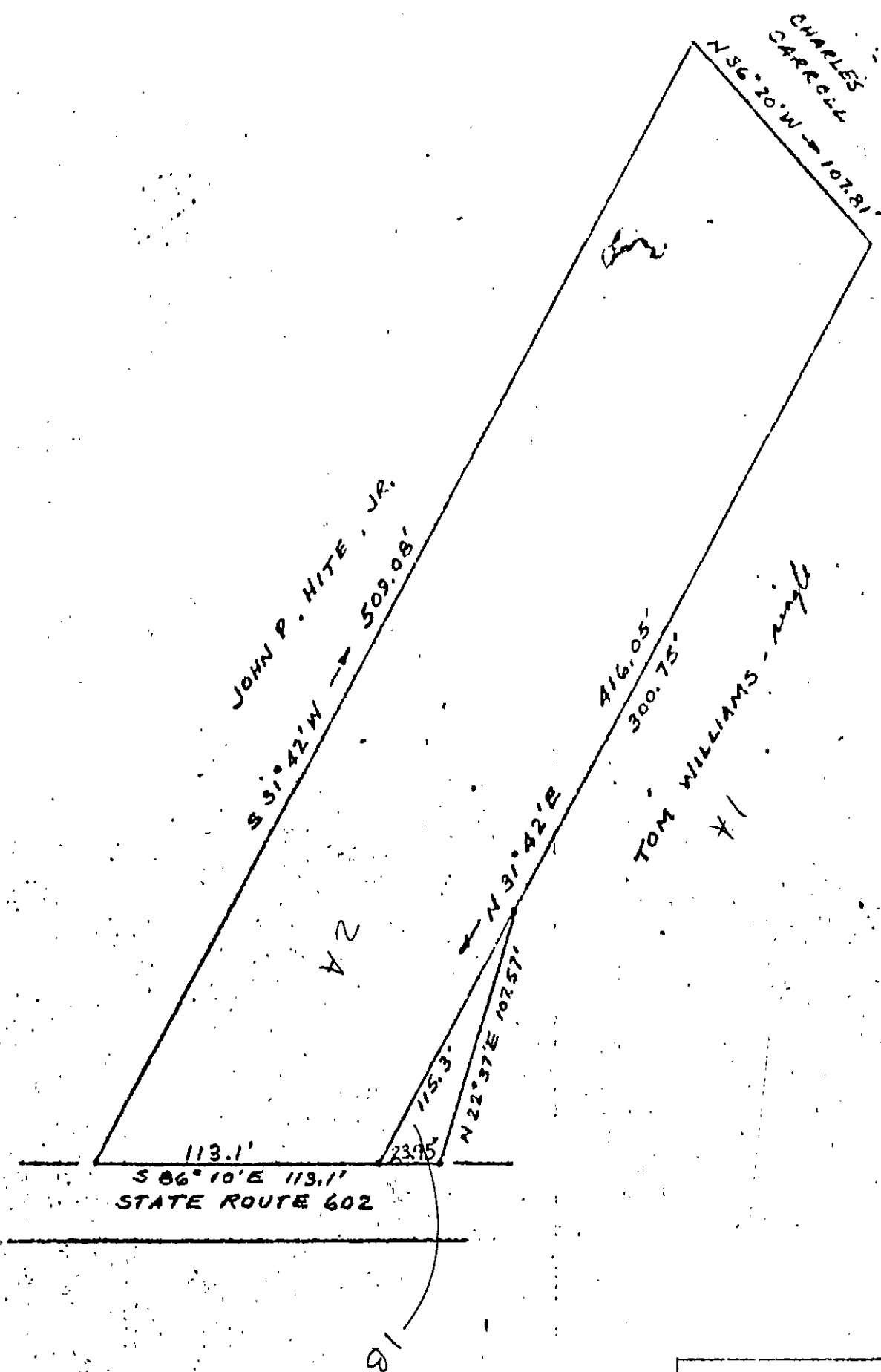


D.B:  
158-255

BOOK 158 PAGE 255



Tax Map 5A (6) 1B + 2A

PROPERTY SURVEY  
 JOHN P. AND OMA LEE HIT  
 BENTON DISTRICT  
 YORK COUNTY, VA.  
 OCT, 1961 SCALE: 1"=60'  
 Walter D. Thomas  
 C.L.S. 579