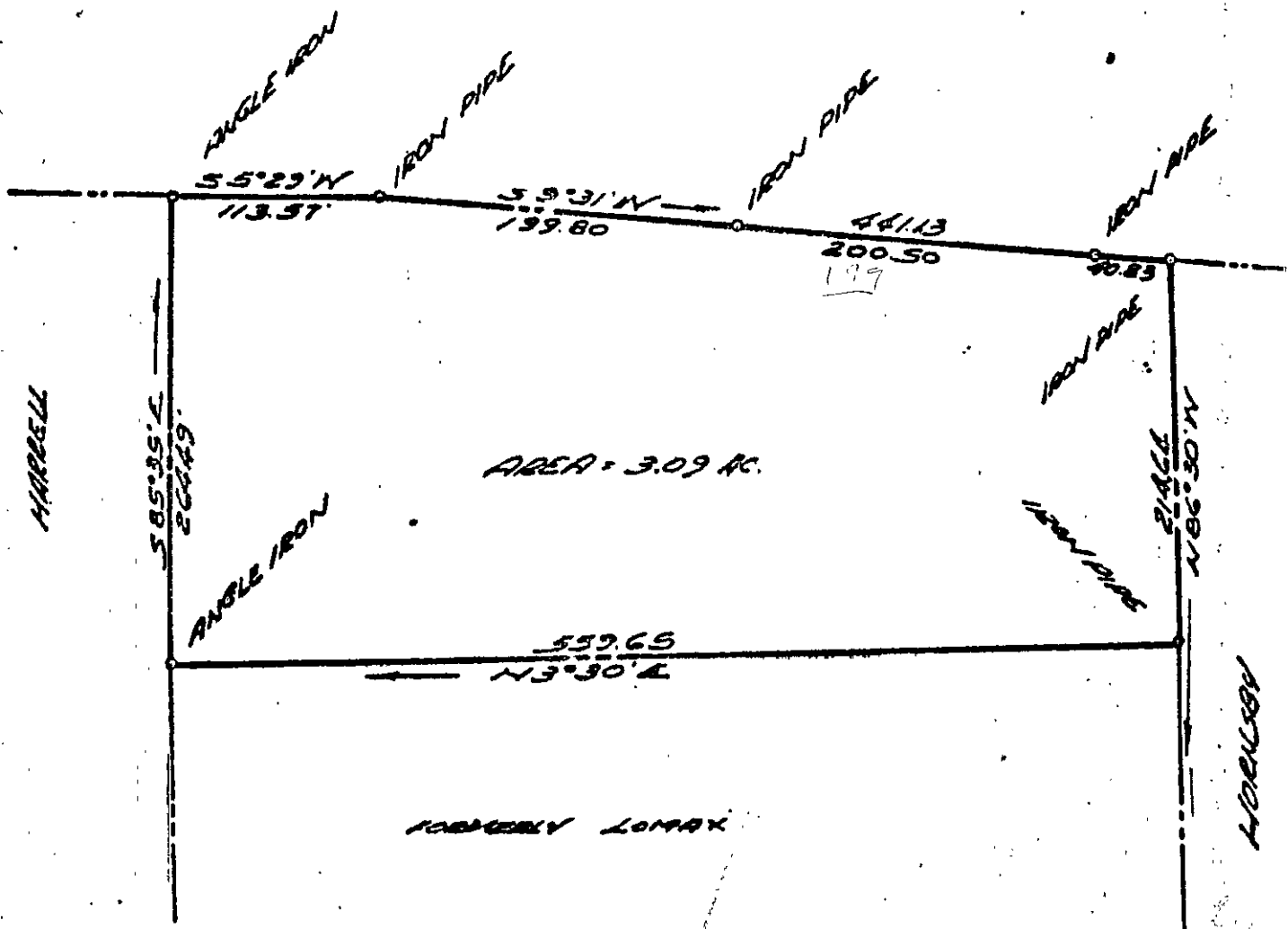




UNITED STATES GOVERNMENT  
EAGLE TRACT



HARRELL

HARRELL

HARRELL

18-3

MAP SHEET  
18-3-A

PLAT SHOWING SURVEY  
OF A PARCEL OF LAND  
FOR  
WILLIAM A. & MILDRED W. HARRELL  
NORTH DISTRICT  
COUNTY, VIRGINIA  
REV. 51963

APPROVED AND CORRECTED  
CIVIL ENGINEER  
WILLIAM H. HARRIS