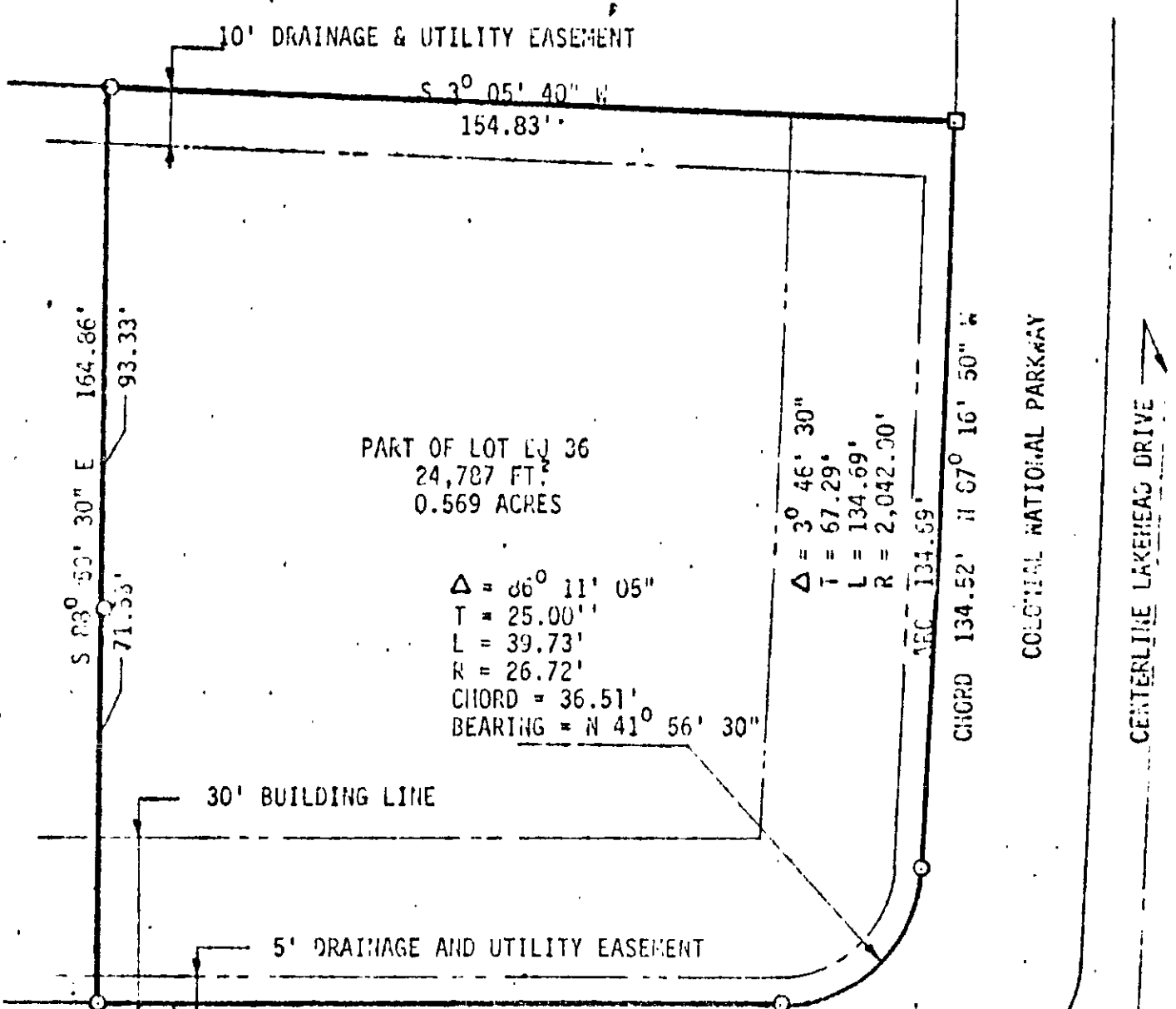


*Approved*  
*Thomas J. Brunner*  
 11/13/69  
 Chairman Bldg. Comm.  
 Queens Lake Club

AFETA CAMP PEARY NAVAL TRAINING STATION



**APPROVED**

**YORK COUNTY BOARD OF SUPERVISORS**

BY *Walter P. ...*

PLAT APPROVING AGENT.

DATE 12-10-69

VARIATIONS APPROVED

DATE \_\_\_\_\_

W. WOODS & ASSOCIATES, ENGINEERS & SURVEYORS, P.O. BOX 545, WILLIAMSBURG, VIRGINIA 23185

LEGEND: ○ IRON PIN, □ DEMON MONUMENT, --- PROPERTY LINE, - - - - - CENTERLINE, - - - - - EASEMENT LINE

PART OF LOT NUMBER 36, SECTION 1A, PART 2  
 QUEENS LAKE, BPTON DISTRICT, YORK COUNTY, VIRGINIA

SCALE: 1"=30' REF. PLAT. CLOSURE 1:2000 DATE AUGUST 22, 1968 AREA 0.569 AC.

11 B @ E5 36A

J.O. 118