

BUCK 232 PAGE 284

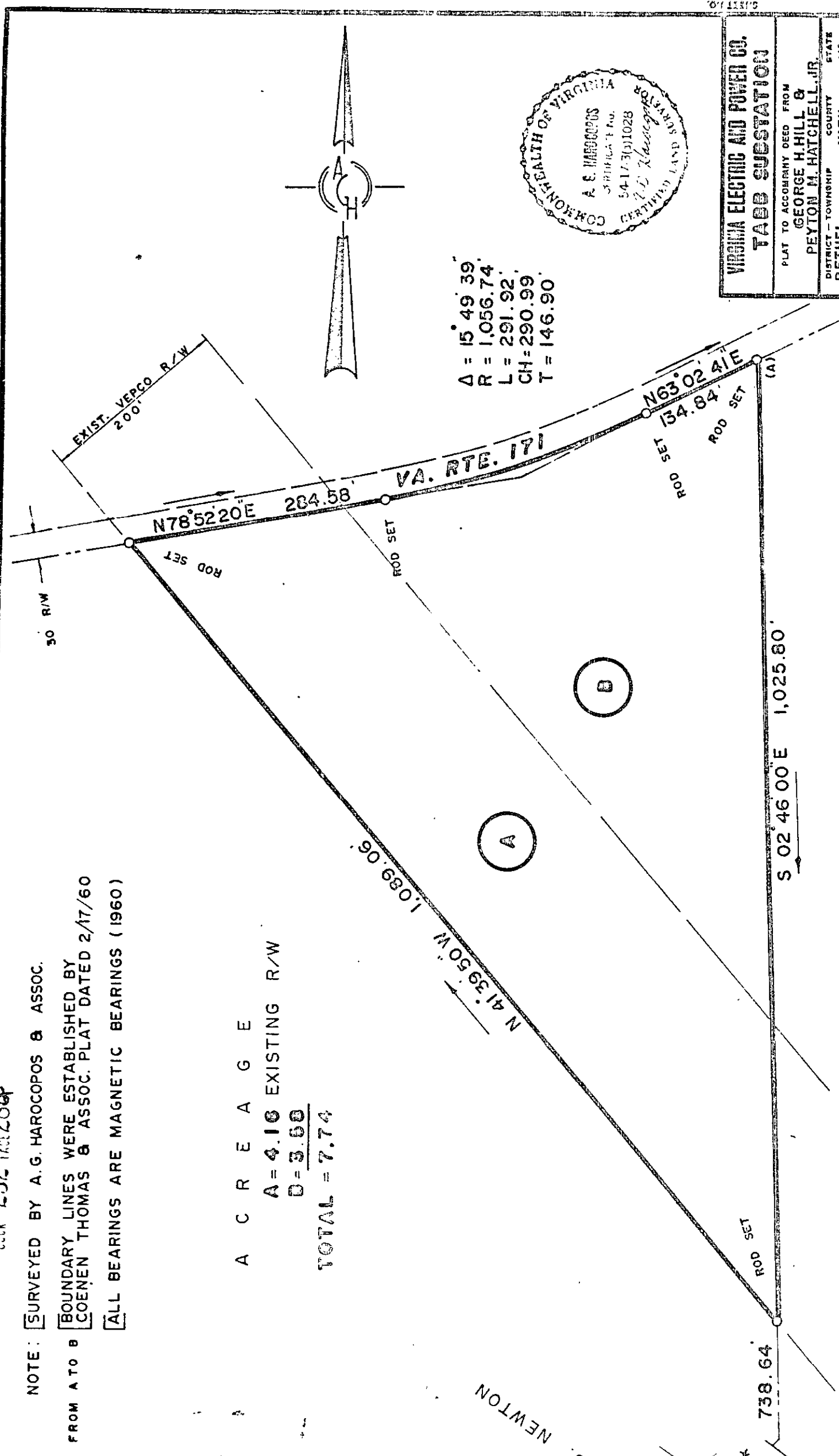
NOTE: SURVEYED BY A.G. HAROCOPOS & ASSOC.

FROM A TO B BOUNDARY LINES WERE ESTABLISHED BY COENEN THOMAS & ASSOC. PLAT DATED 2/17/60

ALL BEARINGS ARE MAGNETIC BEARINGS (1960)

A C R E A G E
A = 4.16 EXISTING R/W
D = 3.60
TOTAL = 7.74

$\Delta = 15^{\circ} 49' 39''$
 $R = 1,056.74'$
 $L = 291.92'$
 $CH = 290.99'$
 $T = 146.90'$



VIRGINIA ELECTRIC AND POWER CO.
TABB SUBSTATION

PLAT TO ACCOMPANY DEED FROM
GEORGE H. HILL &
PEYTON M. HATCHELL, JR.

DISTRICT - TOWNSHIP COUNTY STATE
DEMETRIE VABU 116

PLAT BOOK NO. 8
PAGE 272

W. B. NEWTON
8281-03