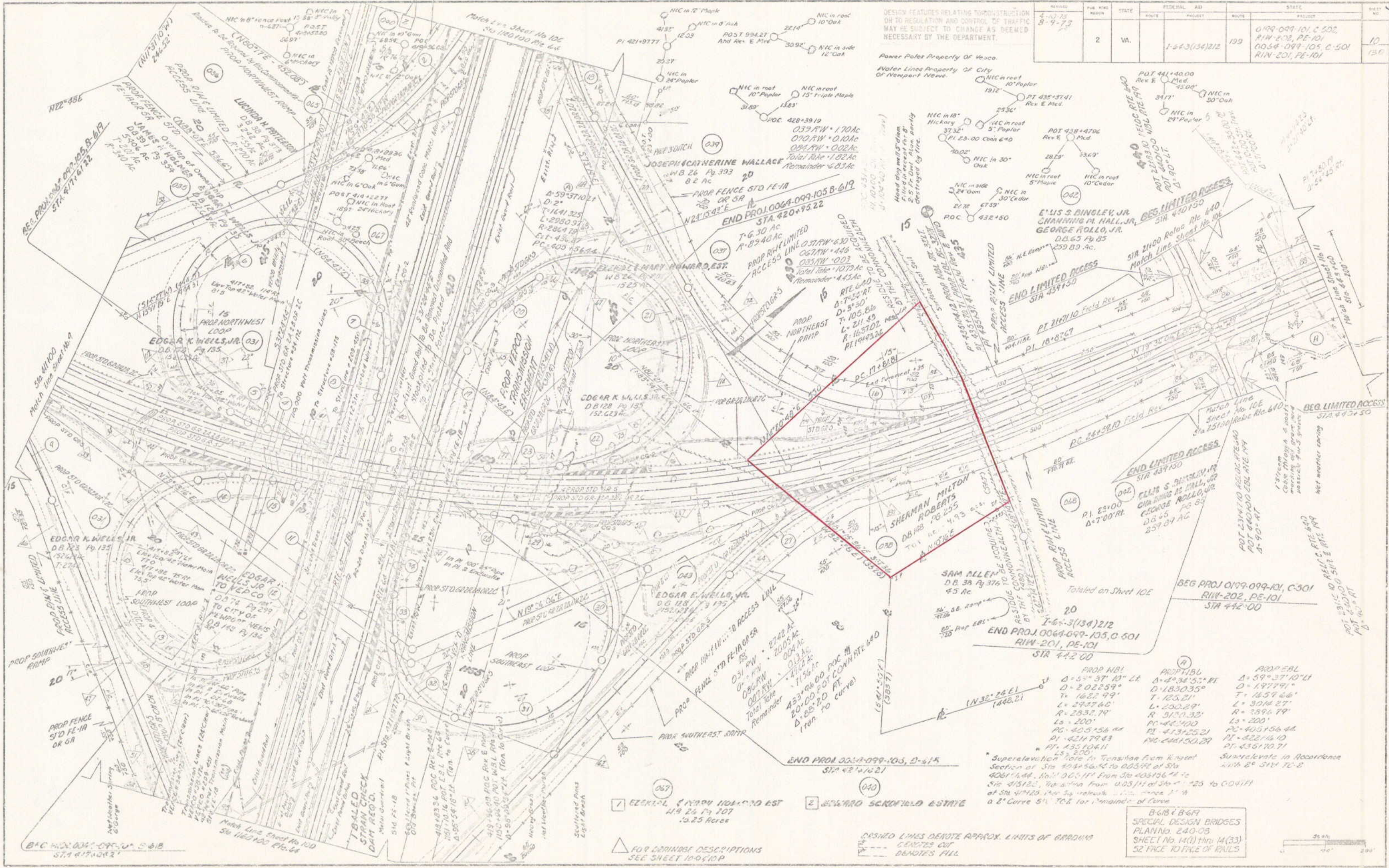


SUFFOLK DISTRICT DESIGN UNIT

DESIGN FEATURES RELATING TO PROPOSED CONSTRUCTION OR TO REGULATION AND CONTROL OF TRAFFIC MAY BE SUBJECT TO CHANGE AS DEEMED NECESSARY BY THE DEPARTMENT.

REVISION	DATE	BY	STATE	FEDERAL AID	ROUTE	PROJECT	ROUTE	STATE	SHEET NO.
8-10-73	8-9-73		VA.	1-243(134)212	199			0199-099-101, C-502, R1W-201, PE-101	10
								0054-099-105, C-501, R1W-201, PE-101	139



PLAN	SURVEYED	G.W. SHOWWELL, JR.	S.T.C.
TRACED	1-1-70	J.V. JONNER	1-1-70
TRACED	7-7-70	J.V. JONNER	7-7-70
TRACED	7-7-70	J.E. WELLS, JR.	7-7-70
TRACED	6-7-70	J.V. JONNER	6-7-70

Super-elevation curve in Transition from highest section of Sta 424+56.42 to 0.05% at Sta 406+144.44. Rate 0.05% from Sta 405+136.42 to Sta 415+120. Transition from 0.05% at Sta 425 to 0.01% at Sta 417+25. 1/4" Sag vertical curve. Length 175' at a 2' Curve 5% T.C.E. for remainder of Curve.

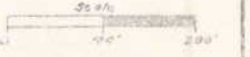
Super-elevate in accordance with 2° 51' 70" E

B-618 & B-619  
SPECIAL DESIGN BRIDGES  
PLAN No. 240-05  
SHEET No. 14(1) thru 14(33)  
52' FACE TO FACE OF RAILS

DASHED LINES DENOTE APPROX. LIMITS OF GRADING  
--- GRADIES CUT  
--- & NOTES FULL

- 1 EDGAR E. WELLS, JR. 152.67 AC
- 2 EDWARD SCORFIELD ESTATE 1.25 Acres

104



PLAN NO.	PROJECT	FILE NO.	SHEET NO.
A	64	2	10