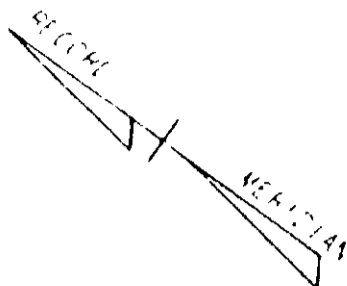
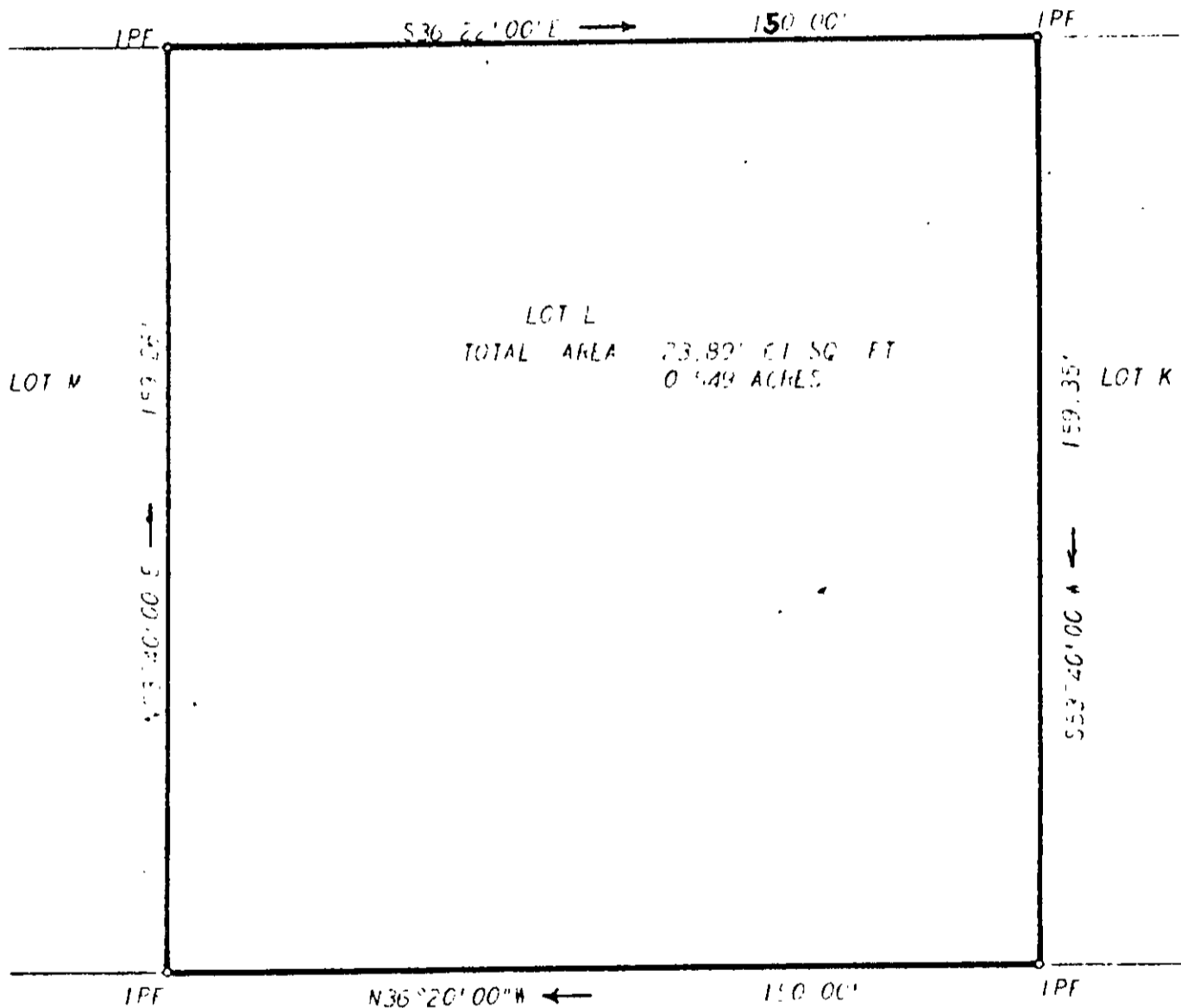


*E.H. Loring, Inc.*



SERVICE ROAD  
C' R/W



LIMITED ACCESS LINE  
INTERSTATE 64

DE 104/346 PR 5/95  
VCH DRAWING 006-099-102 R/W-201

V. WOODSON & ASSOCIATES, INC ENGINEERS, SURVEYORS & PLANNERS, P. O. BOX 633 WILLIAMSBURG, VIRGINIA 23185

LEGEND (O) - IP - IRON PIN, (M) - MON - MONUMENT - - - PROPERTY LINE - - - CENTERLINE - - - EASEMENT LINE

PREPARED BY: V. WOODSON & ASSOCIATES, INC  
DATE: MARCH 14, 1978

SCALE 1" = 30' PER DATE MARCH 14, 1978 AREA 0.549 ACRES

5A (5)h