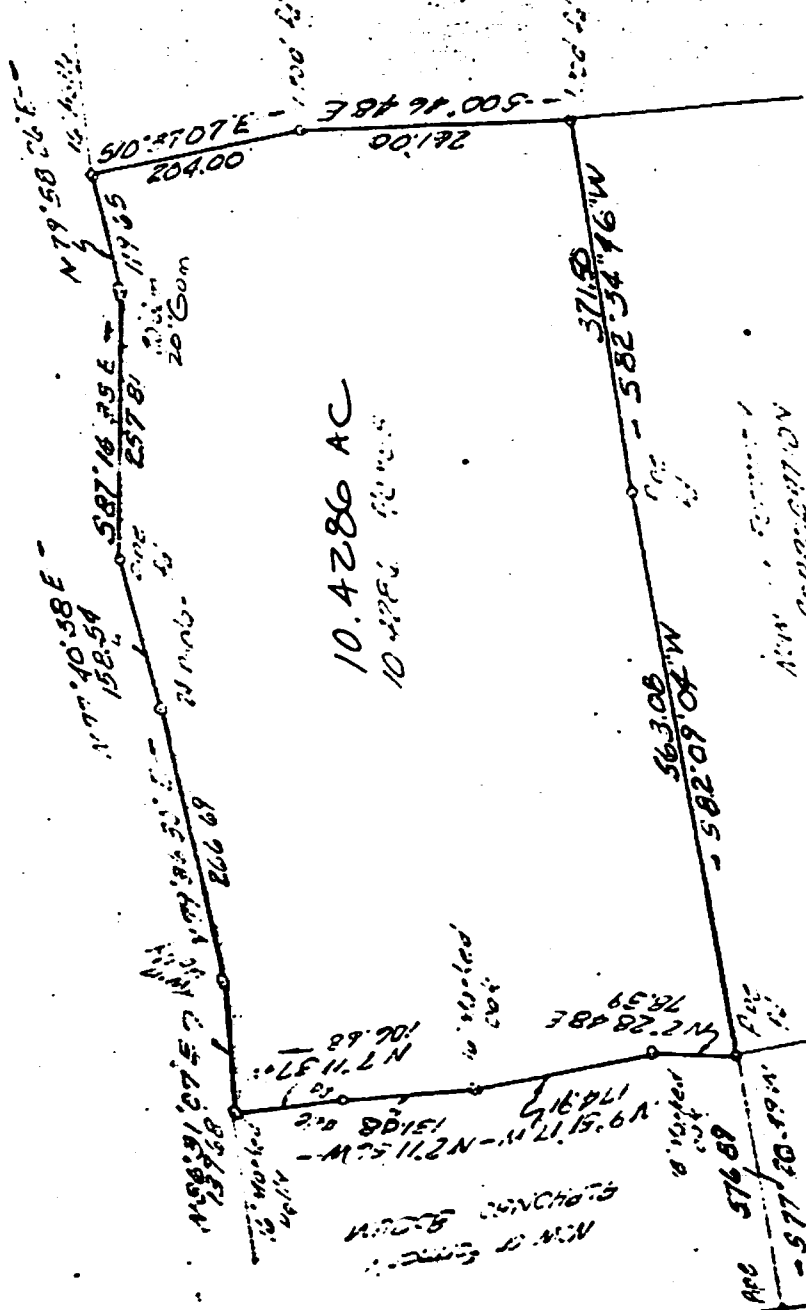


BOOK 270 PAGE 209

PLANNED BY COENEN & ASSOCIATES



DEED w/24-250 @  
 DB 283-411

PLAT OF THE PROPERTY  
 OWNED BY THE HEIRS OF  
 ANTON MORRIS  
 10.4286 ACRES  
 SECTION 14, TOWNSHIP 12 N., RANGE 12 E.,  
 YORK COUNTY, PENNSYLVANIA

COENEN & ASSOCIATES  
 ENGINEERS — PLANNERS — SURVEYORS  
 600 J. CLYDE MORRIS BLVD — NEWPORT NEWS, VIRGINIA

SCALE: 1" = 100' DATE: FEB 2, 1950

24-250