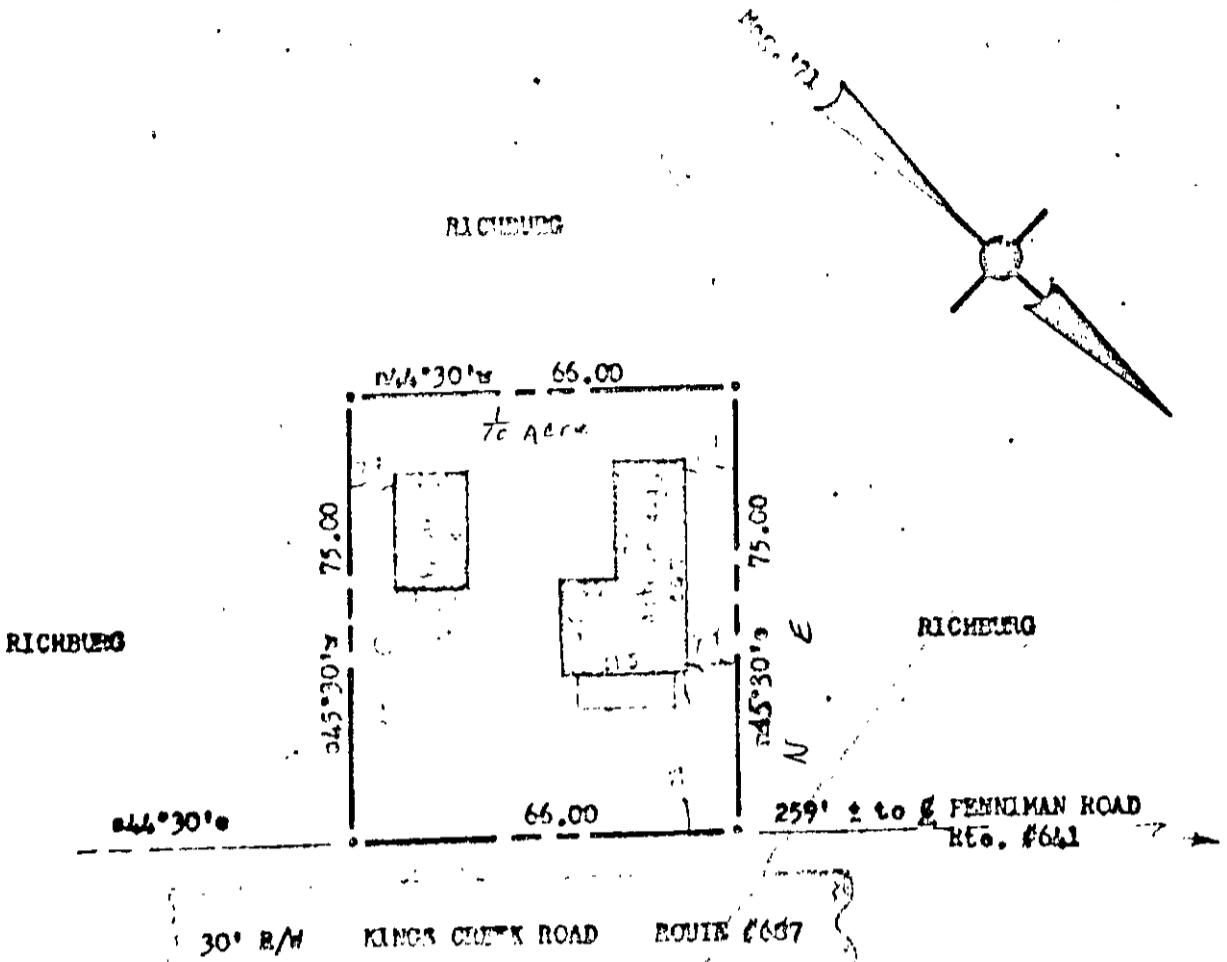


306 564

BOOK 306 PAGE 564

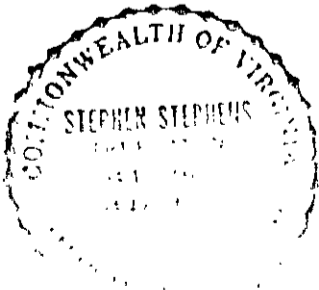


NOTE: Iron pipes at all corners,  
Bearings are clockwise.

Ref. to D.B. # 72, p. #238.

AREA: 4,950 sf = 0.114 Acre.

This plat was filed on 7-20-71. We surveyed the property shown on this plat on 7-20-71. The bearings and distances shown on this plat are the result of our survey. We warrant that the bearings and distances shown on this plat are correct to the best of our knowledge and belief. We do not warrant that the property shown on this plat is the same as the property shown on the plat to which it refers.



PLAT of:  
 Property of:  
 ALLEN FREETA, Estate  
 Scaled: 1" = 20' Sept. 1971  
 SURVEYED BY: [Name], VIRGINIA

Job #921a

11-121

(ENCL # 6)