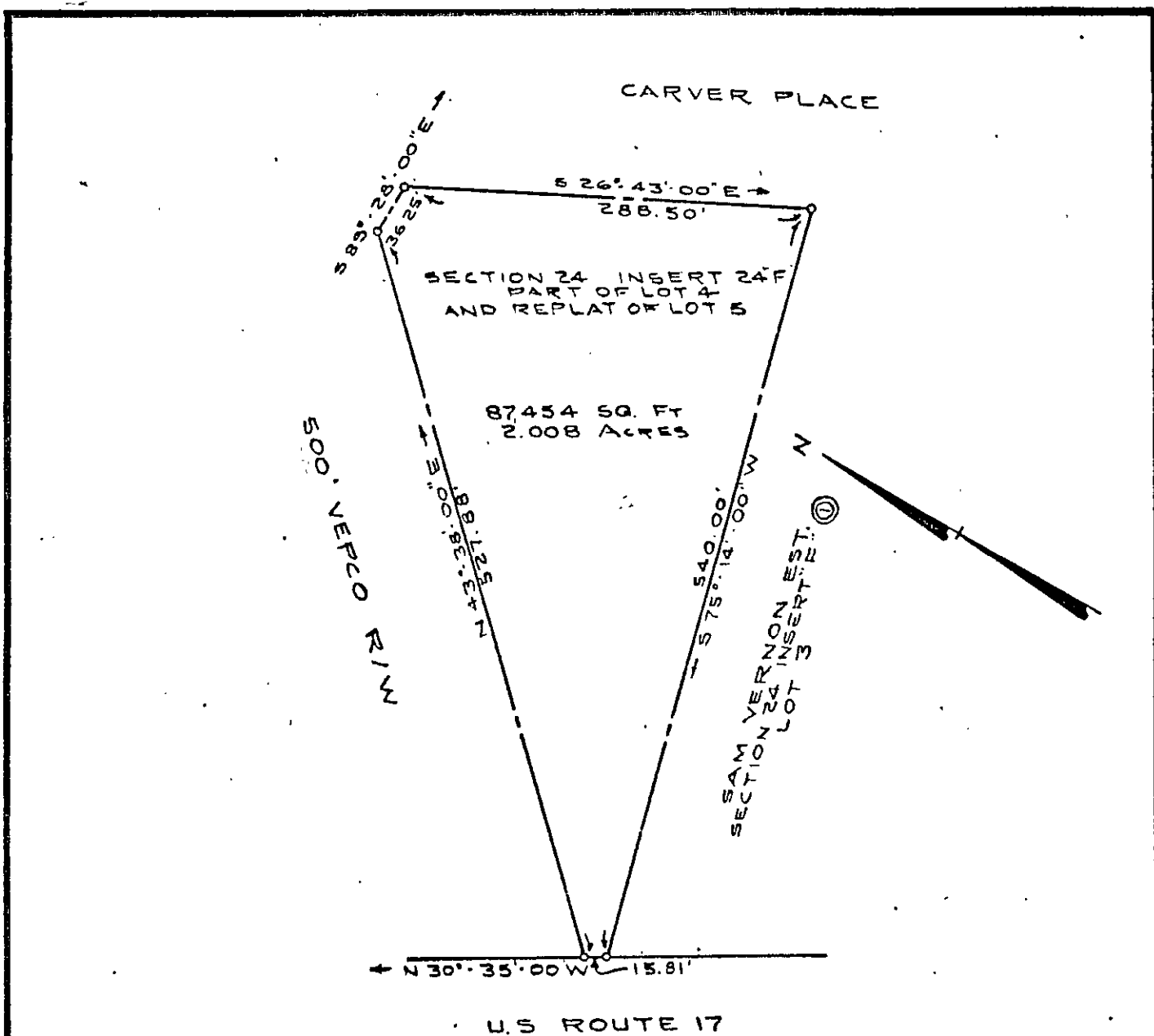


24F (1) 4A

323 -162

BOOK 323 PAGE 162



PLAT SHOWING A PARCEL OF LAND LOCATED
 IN SAM VERNON EST. BEING A PART OF LOT 4 AND
 THE REPLAT OF LOT 5
 IN NELSON MAGISTERIAL DISTRICT, YORK COUNTY, VIRGINIA
 TO BE ACQUIRED BY THE COUNTY OF YORK, VIRGINIA.
 SCALE 1" = 100' Nov. 13, 1976

R. STUART ROYER & ASSOCIATES
 CONSULTING ENGINEERS
 RICHMOND, VIRGINIA

6928-3
 2

24F (1) 4A

24F (1) 4A
323-162