

RACRIS

GROVE

LOT 2

THE ESTATE OF MARY S. HARRIS (WB 39 PG. 312.)

TOTAL NEW ACREAGE: 1.0612 AC.

ORIGINAL LOT LINE @ PB 6-189

ADJUSTED LOT LINE

TOTAL NEW ACREAGE: 0.6361 AC.

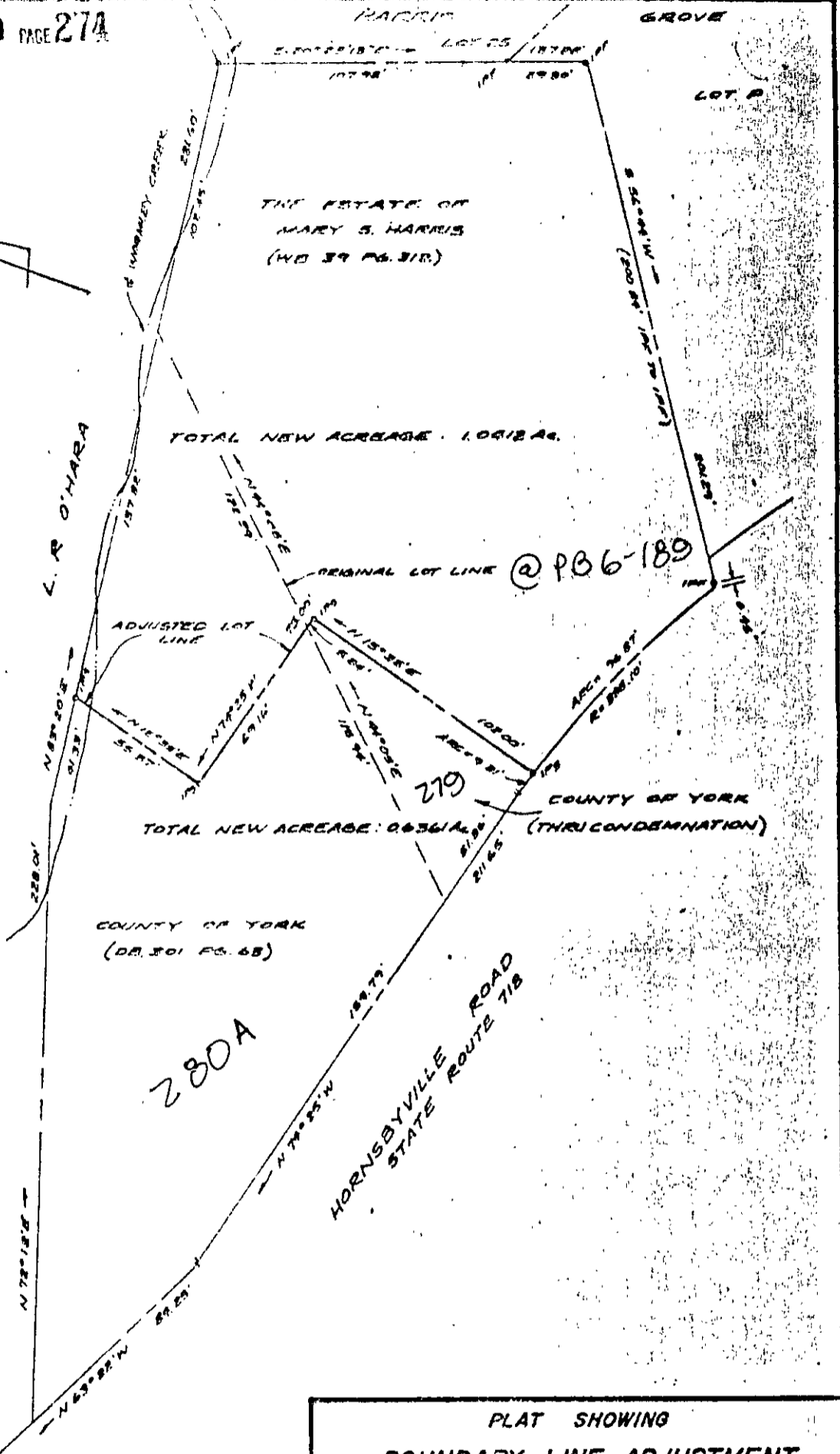
COUNTY OF YORK (THRU CONDEMNATION)

COUNTY OF YORK (DB. 301 PG. 68)

280A

279

HORNSBYVILLE ROAD STATE ROUTE 712



REF: PB 6 PG 186

PLAT SHOWING
 BOUNDARY LINE ADJUSTMENT
 BETWEEN PROPERTIES OF
 THE ESTATE OF MARY S. HARRIS
 &
 THE COUNTY OF YORK
 VIRGINIA
 ENGINEERS
 VIRGINIA
 DATE: MARCH 20, 1979

279+
24-280A