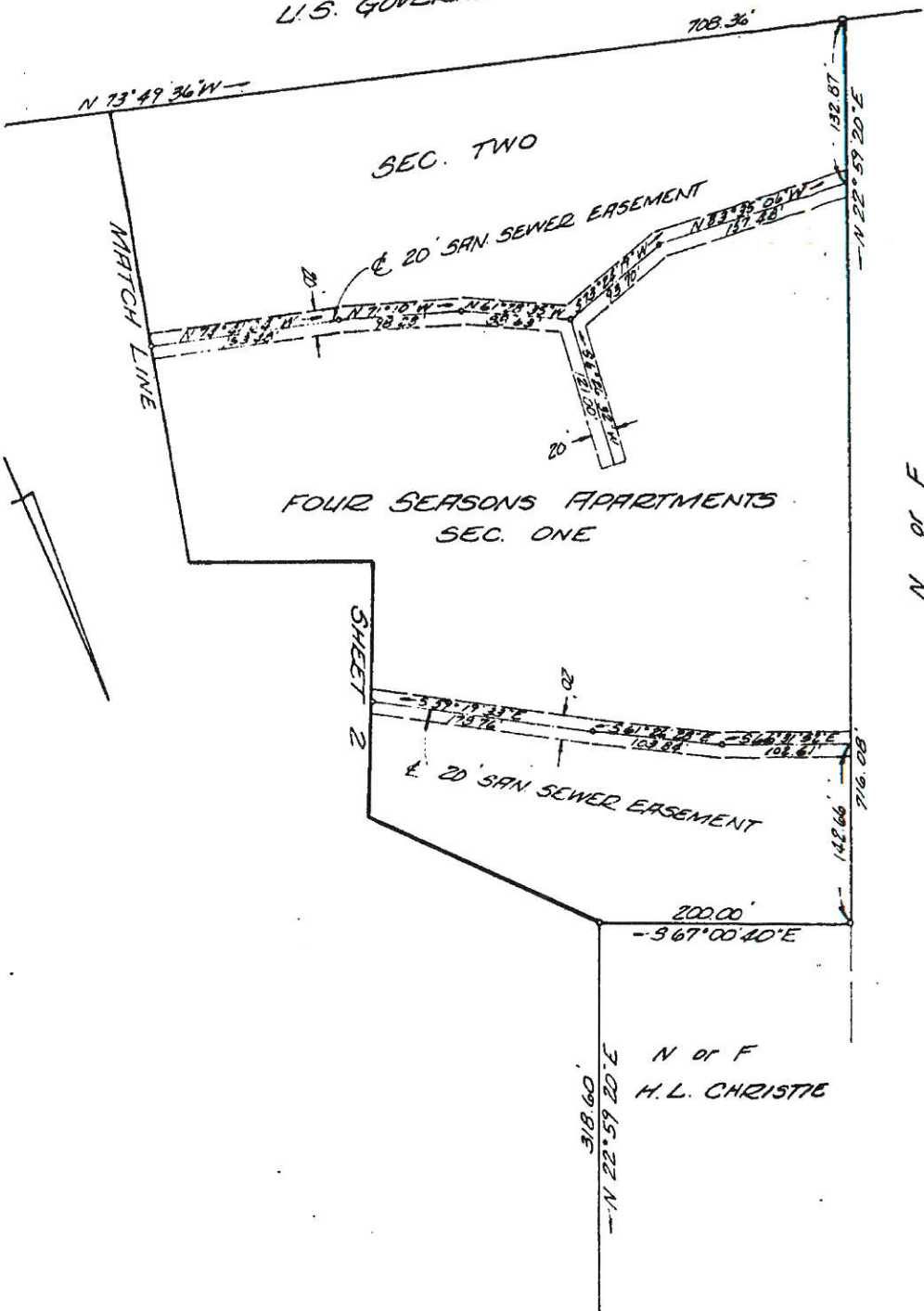


U.S. GOVERNMENT

BOOK 345 PAGE 166



N of F
LEWIS A. McMURRAN, JR.

N of F
H. L. CHRISTIE

TO HAMPTON — 567' 00" 40" E
STATE ROUTE 134

TO GRAFTON — SHEET 3 of 3



PLAT SHOWING
 20' SANITARY SEWER EASEMENT
 TO BE CONVEYED TO COUNTY
 OF YORK.
 BETHEL DIST. YORK COUNTY, VA.

COENEN & ASSOCIATES, INC.
 ENGINEERS — PLANNERS — SURVEYORS
 606 J. CLYDE MORRIS BLVD.—NEWPORT NEWS, VIRGINIA
 SCALE: 1" = 100' DATE: JUNE 11, 1980