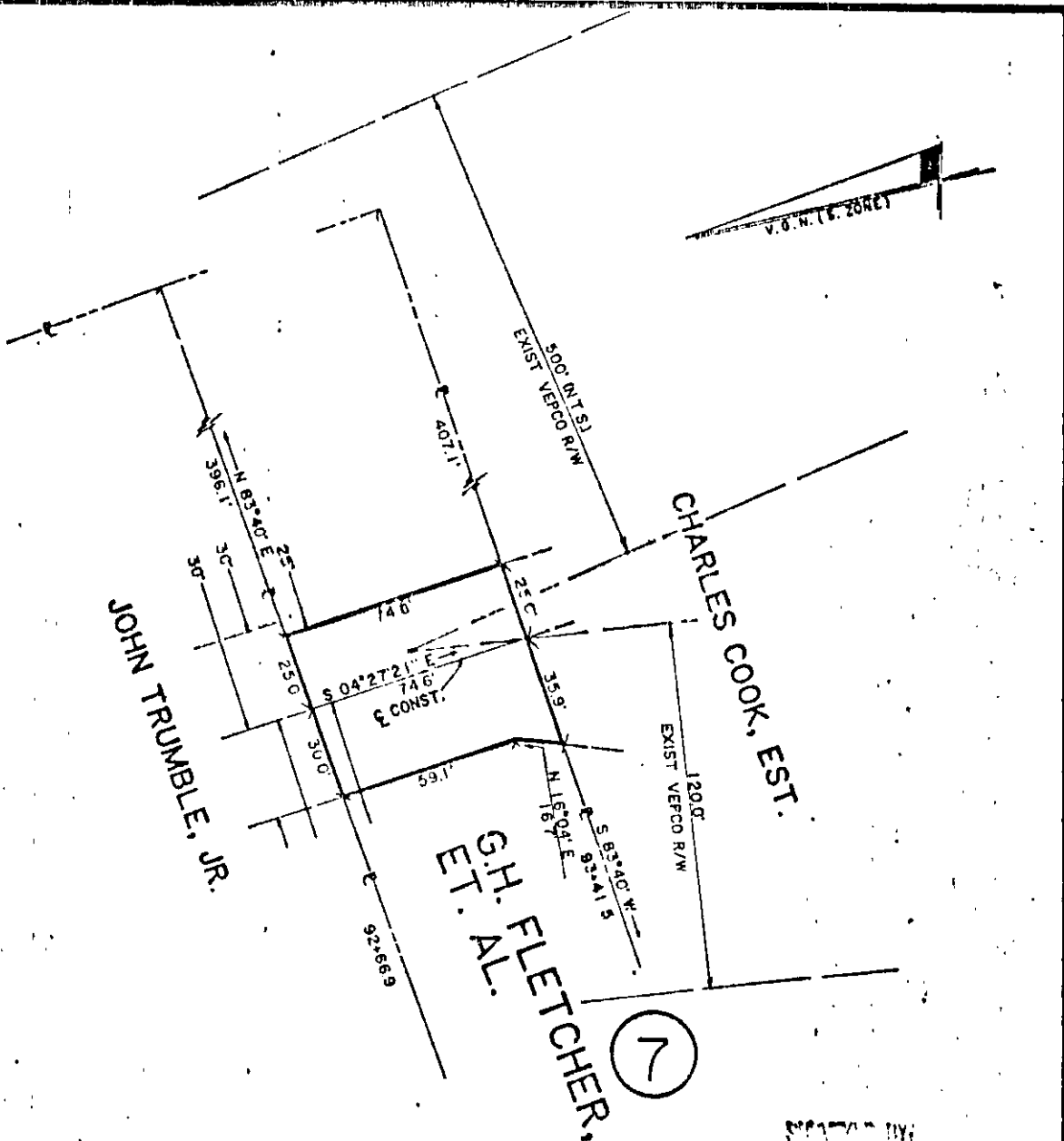


381 - 56  
 BOOK 581 PAGE 58

# 566.65



7

PREPARED BY  
 CARROUTH AND ASSOCIATES, INC.

<b>VIRGINIA ELECTRIC AND POWER CO.</b>			
<b>YORKTOWN P.S. HAUL ROAD</b>			
PLAT TO ACCOMPANY RIGHT-OF-WAY AGREEMENT WITH			
<b>G.H. FLETCHER, ET. AL.</b>			
DISTRICT - TOWNSHIP	COUNTY	STATE	
NELSON	YORK	VA.	
SCALE: 1 INCH = 50' FT.		SURVEYED BY	
		CARROUTH & ASSOC	
DRAWN BY	DATE	NO. 7	
LDH	2/22/83		

0.10 AC. (0.09 AC. IN EXIST. VEPCO 500' & 120' R/Ws.)

REVISIONS

4	3	2	1
---	---	---	---

JN 480018

BRUNING 44-132 23062

SHEET NO.  
 DRAWER NO.

24-261