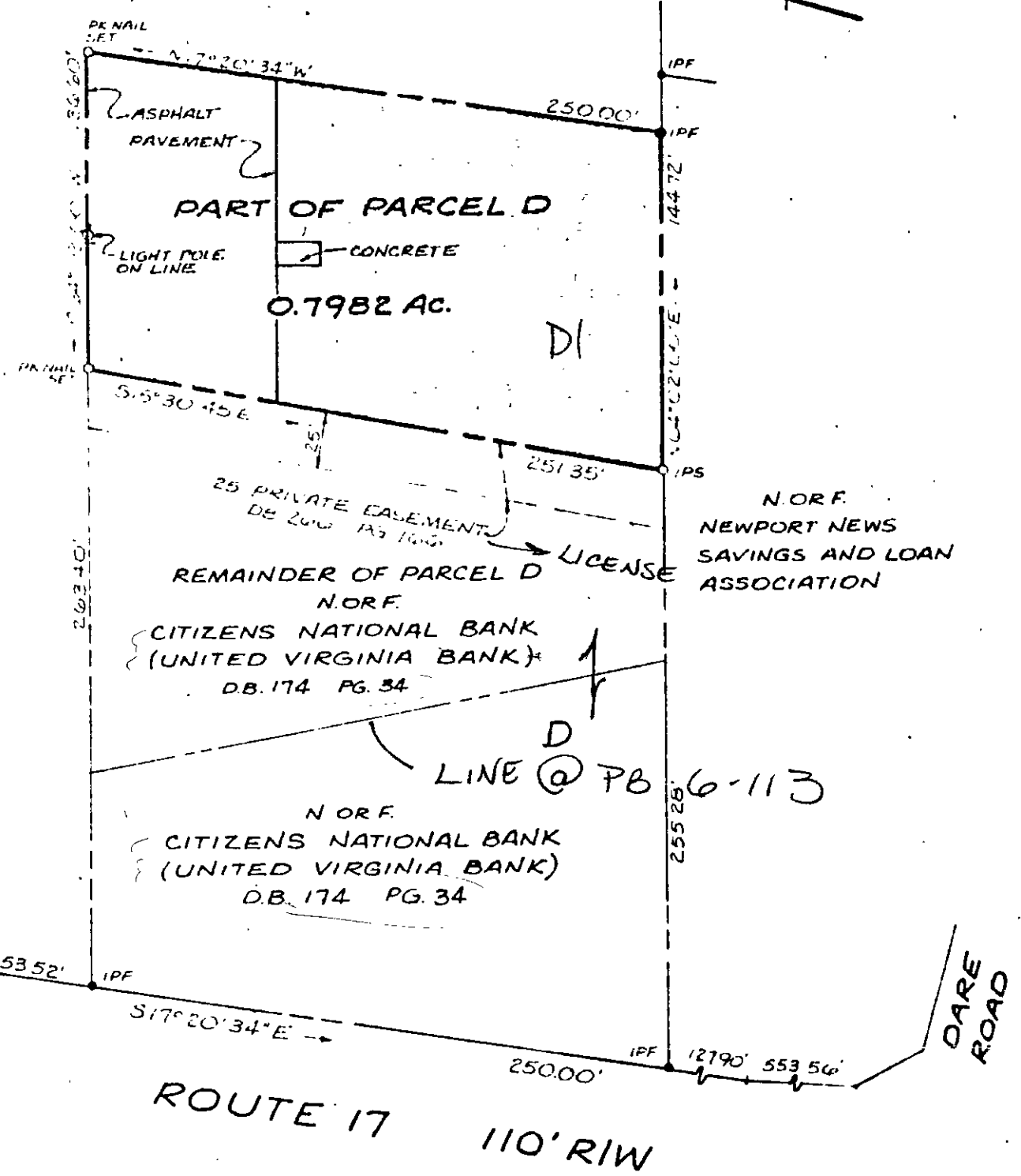


N O R F
 GRAFTON SHOPPING CENTER INC.
 D.B. 175 PG. 118
 D.B. 150 PG. 113



I HEREBY CERTIFY THAT THIS BOUNDARY SURVEY, TO THE BEST OF MY KNOWLEDGE AND BELIEF, IS CORRECT AND COMPLIES WITH THE MINIMUM PROCEDURES AND STANDARDS ESTABLISHED BY THE VIRGINIA STATE BOARD OF ARCHITECTS, PROFESSIONAL ENGINEERS, LAND SURVEYORS, AND CERTIFIED LANDSCAPE ARCHITECTS

C. K. Tudor
 C. K. TUDOR C.E. & C.L.S.

F.B. 659 PG. 21 & 22

PLAT OF THE PROPERTY TO BE CONVEYED TO GRAFTON SHOPPING CENTER INC.
0.7982 AC. PART OF PARCEL D CITIZENS NATIONAL BANK GRAFTON DISTRICT YORK COUNTY, VIRGINIA
C.K. TUDOR ENGINEERS, INC. NEWPORT NEWS, VIRGINIA SCALE: 1" = 60' DATE: FEB. 27, 1985

29 (24) D+D1