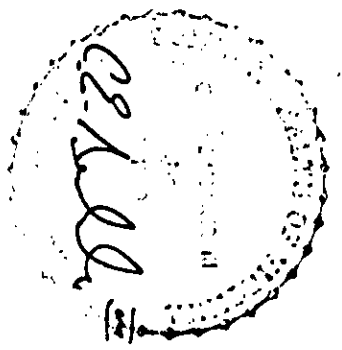


J.O. 873



PARCEL Y
 PROPERTY OF
B. D. ASHE AND ROBERT F. RIPLEY, JR.
 A VIRGINIA GENERAL PARTNERSHIP 1985 I
 (P.B. 10, P. 144; P.B. 10, P. 143)

5.484 ACRES

2.064 ACRES

NOW OR FORMERLY
DAVID SCARBOROUGH AND CAROL A. SCARBOROUGH
 (D.B. 302, P. 88)

CLINTON C. GARDNER AND NANCY C. GARDNER
 OF
 (D.B. 343, P. 698)
 (D.B. 343, P. 698)

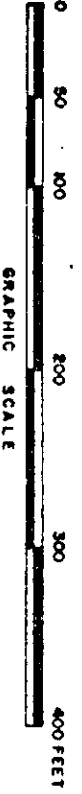
NOW OR FORMERLY
CLINTON MCNAIR AND VENETTA MCNAIR
 (D.B. 133, P. 307)

NOW OR FORMERLY UNITED STATES OF AMERICA (D.B. 285, P. 4)	NOW OR FORMERLY ALMA C. RAINEY (P.B. 9, P. 18; D.B. 274, P. 692)
--	--

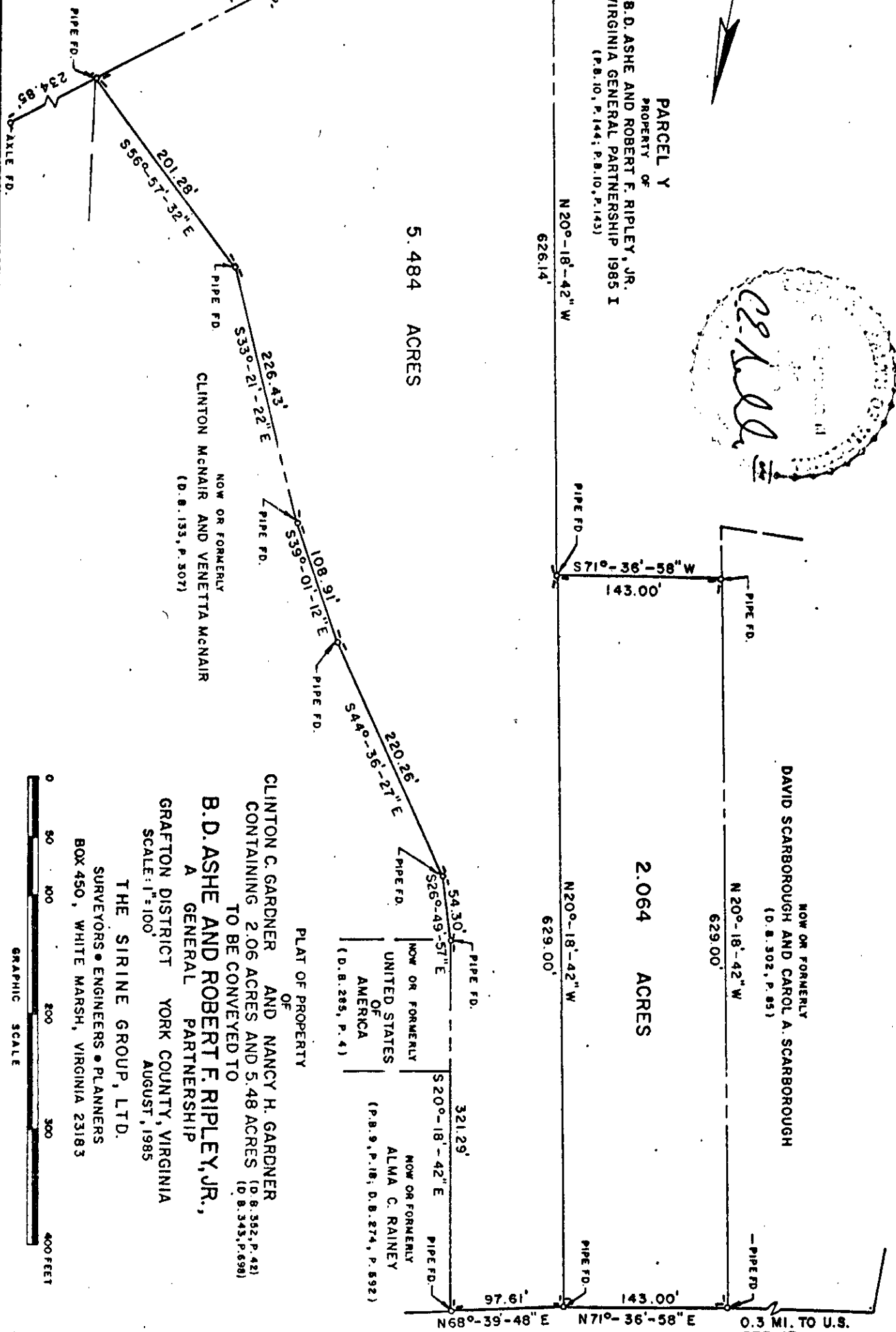
CLINTON C. GARDNER AND NANCY H. GARDNER
 CONTAINING 2.06 ACRES AND 5.48 ACRES (D.B. 343, P. 698)
 TO BE CONVEYED TO

B. D. ASHE AND ROBERT F. RIPLEY, JR.,
 A GENERAL PARTNERSHIP
 GRAFTON DISTRICT YORK COUNTY, VIRGINIA
 SCALE: 1" = 100'
 AUGUST, 1985

THE SIRINE GROUP, LTD.
 SURVEYORS • ENGINEERS • PLANNERS
 BOX 450, WHITE MARSH, VIRGINIA 23163



GRAPHIC SCALE



DARE ROAD (ST. RTE. 621) 0.3 MI. TO U.S. RTE. 17