

485-588

21262.05

BOOK 485 PAGE 588



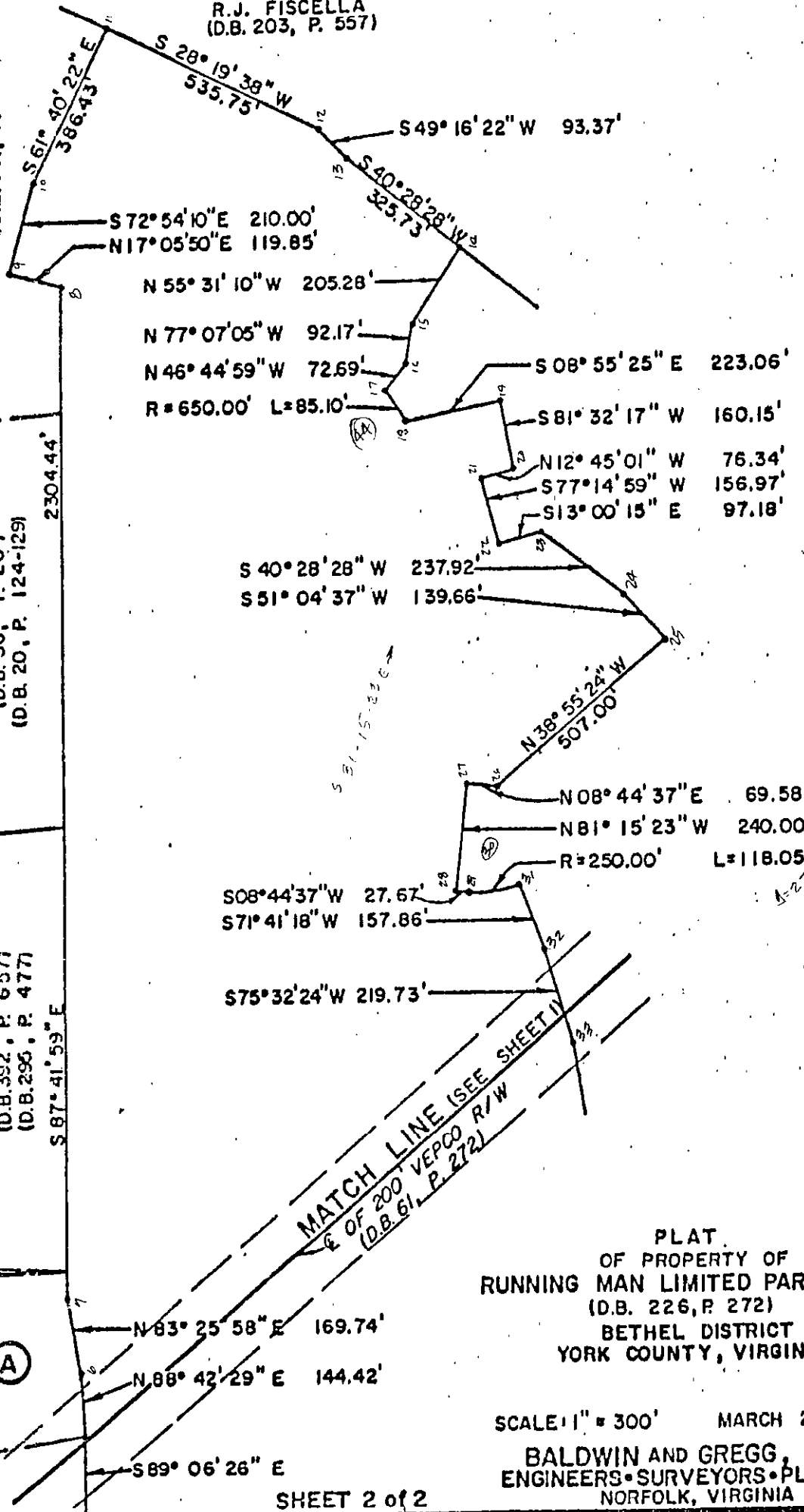
NOW OR FORMERLY  
RUNNING MAN DEVELOPMENT COMPANY  
(D.B. 381, P. 763)

NOW OR FORMERLY  
R.J. FISCELLA  
(D.B. 203, P. 557)

NOW OR FORMERLY  
E.A. & T.R. SINCLAIR  
(D.B. 36, P. 20)  
(D.B. 20, P. 124-129)

NOW OR FORMERLY  
PAUL K. LOTZ, ET UX  
(D.B. 392, P. 657)  
(D.B. 296, P. 477)

NOW OR FORMERLY  
RUNNING MAN LIMITED PARTNERSHIP  
(D.B. 226, P. 272)



MATCH LINE (SEE SHEET II)  
OF 200' VEPCO R/W  
(D.B. 61, P. 272)

PLAT  
OF PROPERTY OF  
RUNNING MAN LIMITED PARTNERSHIP  
(D.B. 226, P. 272)  
BETHEL DISTRICT  
YORK COUNTY, VIRGINIA

SCALE 1" = 300' MARCH 26, 1986  
BALDWIN AND GREGG, LTD.  
ENGINEERS • SURVEYORS • PLANNERS  
NORFOLK, VIRGINIA

SHEET 2 of 2

37-144