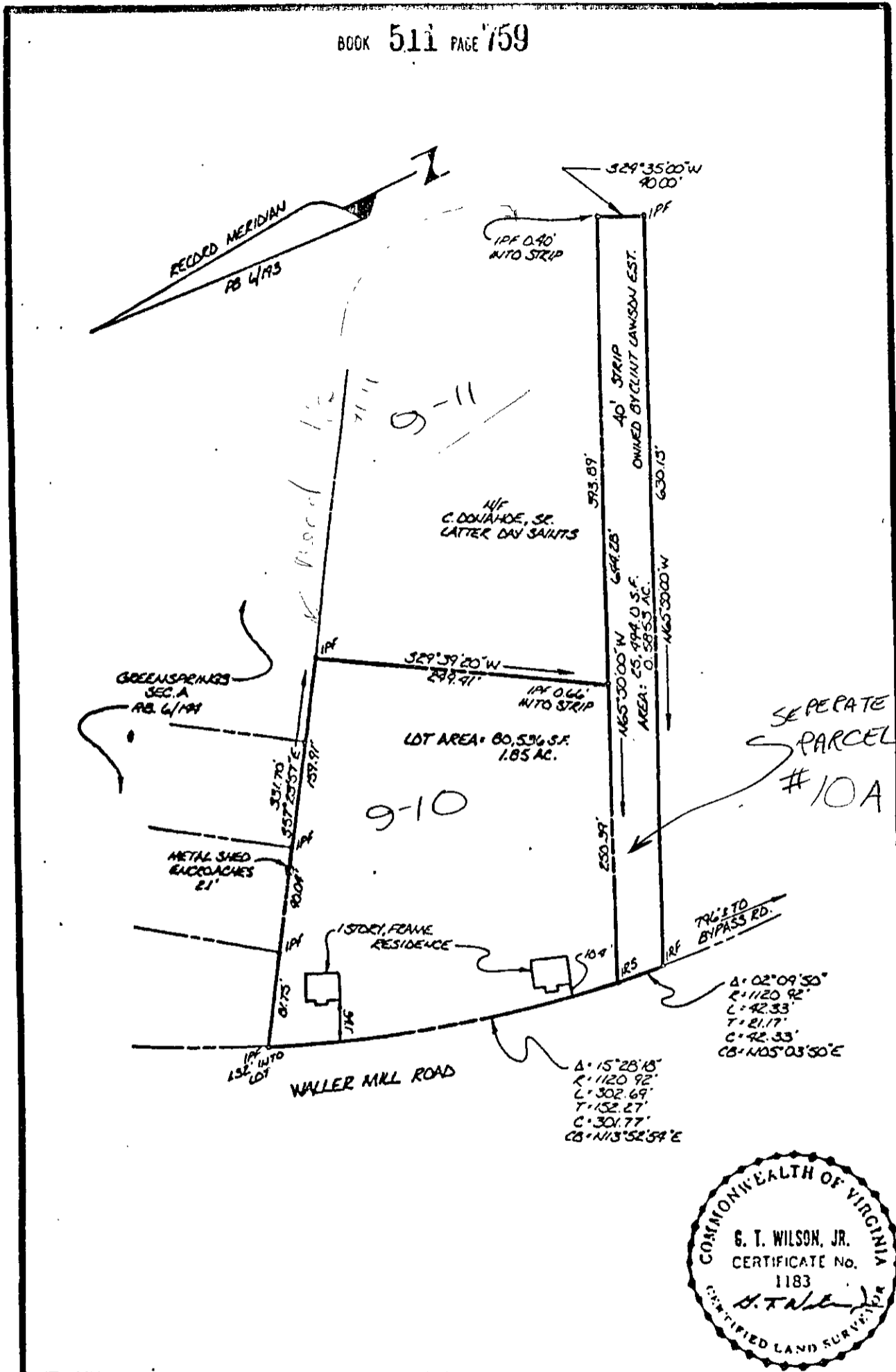


511-759

BOOK 511 PAGE 759



AES, a professional corporation      engineers, surveyors, planners      Williamsburg, Virginia

**PLAT OF 2 PARCELS**  
OWNED BY CLINT LAWSON ESTATE  
FOR CONVEYANCE TO VENTURE PROPERTIES III

WALLER MILL ROAD      YORK COUNTY      VIRGINIA

Case No. 8974      Record 521 / 105      Date: 11 / 7 / 86      Job No. 8974

9-10 + 10A