

FILED W/
CHANCERY
CASE # 7761 +
DEED @
DB. 635-104

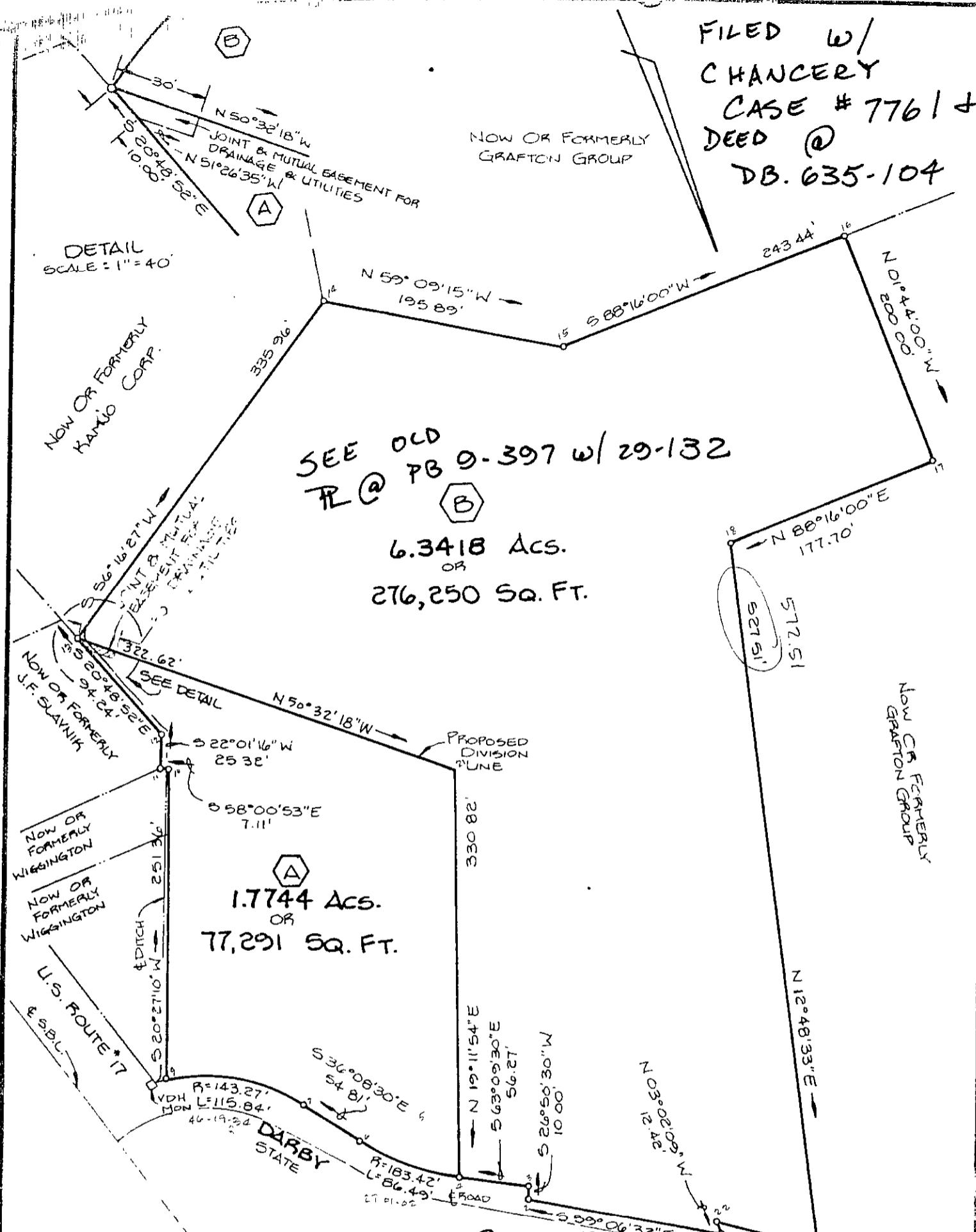
NOW OR FORMERLY
GRAFTON GROUP

DETAIL
SCALE = 1" = 40'

SEE OLD
PL @ PB 9-397 w/ 29-132

6.3418 Acs.
OR
276,250 SQ. FT.

1.7744 Acs.
OR
77,291 SQ. FT.



NOTE: THE EXTERIOR BOUNDARY INFORMATION SHOWN HEREON IS TAKEN FROM A PLAT PREPARED BY ROLAND D. BAIRD, C.L.S. DATED APRIL 21, 1989 ENTITLED PLAT SHOWING PARCELS-1, 2 & 3 & PROPOSED DIVISION OF THE EDWARD GRIFFIN ESTATE YORK COUNTY, VIRGINIA.

DAVIS & ASSOCIATES
SURVEYORS & PLANNERS
YORK COUNTY, VIRGINIA

PLAT SHOWING
DIVISION OF THE
EDWARD GRIFFIN ESTATE
COUNTY OF YORK VIRGINIA

bought by
old PL's
@ DB 635-104

CODE: 90-088C DWN. BY: S.H. SCALE: 1" = 100' TO: MOORE DATE: 1 OCT. 90

REVISED: 25 FEB. 91
REVISED: 12 APRIL 91

29-130