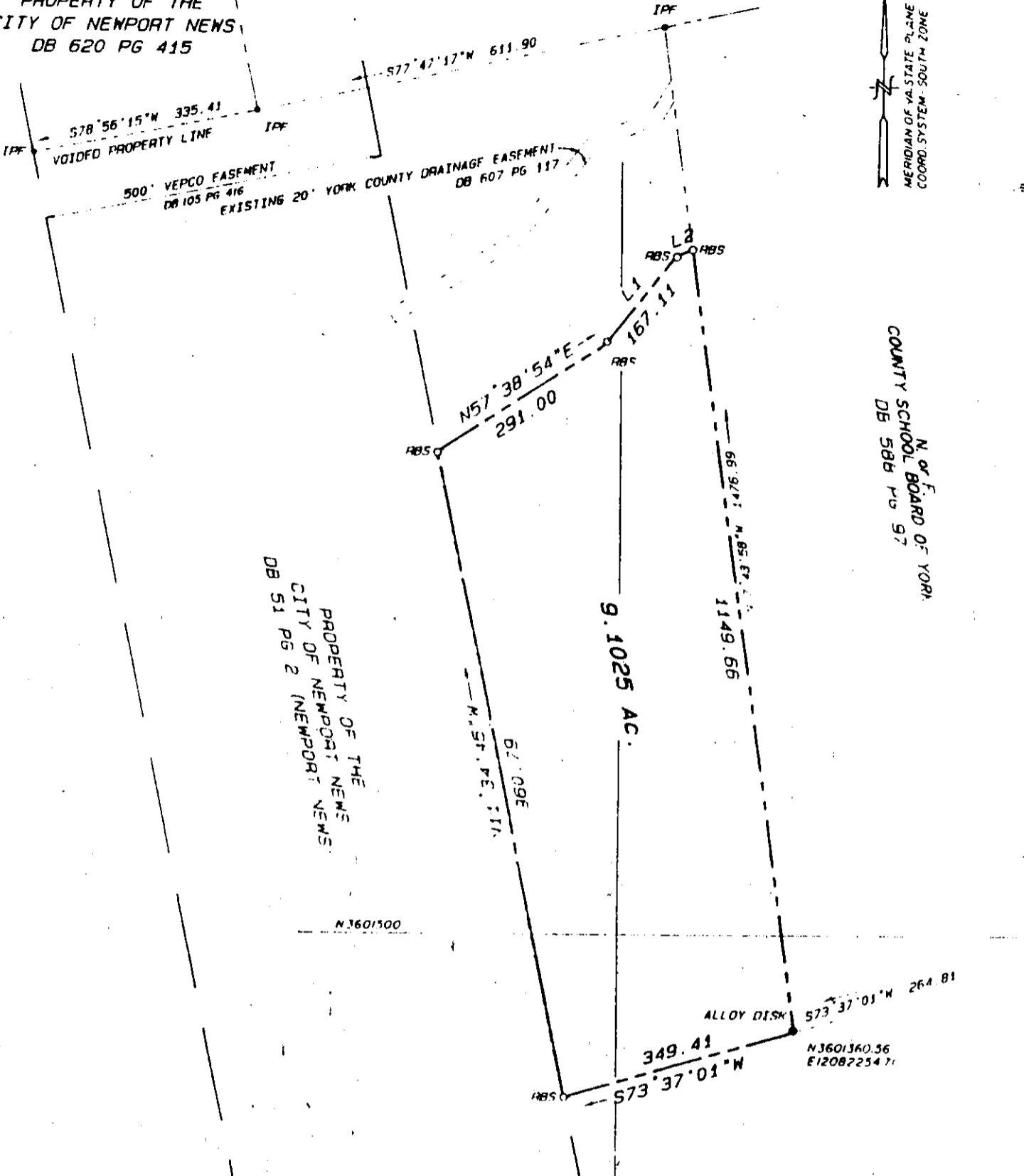


BK0768PG0262

N. OF F. G. C. R., INC.
DB 627 PG 321

PROPERTY OF THE
CITY OF NEWPORT NEWS
DB 620 PG 415

MERIDIAN OF VA-STATE PLANE
COORD. SYSTEM-SOUTH ZONE



N. OF F. BOARD OF YORK
COUNTY SCHOOL BOARD OF YORK
DB 588 PG 97

PROPERTY OF THE
CITY OF NEWPORT NEWS
DB 51 PG 2 (NEWPORT NEWS)

9.1025 AC.

N 3601500

ALLOY DISK
573°37'01\"W 264.81
N3601360.36
E12082254.71

RBS: REBAR SET WITH N.N.
WATERWORKS PROPERTY
CORNER DISK

COMBINED SCALE FACTOR
: 0.99995169

COORDINATES BASED ON
INTERNATIONAL FOOT
Supplied by NNWW.

No.	Direction	Length
1	N38°33'25\"E	167.11
2	N66°36'07\"E	25.49

REV 12-3-93 by NNWW COORDINATE NOTE

PLAT OF THE PROPERTY OF
THE CITY OF NEWPORT NEWS
TO BE CONVEYED TO
THE COUNTY OF YORK

9.1025 AC.
GRAFTON DISTRICT
YORK COUNTY, VIRGINIA

C. K. TUDOR ENGINEERS, INC.

NEWPORT NEWS, VIRGINIA

SCALE: 1\" = 200' DATE: 8/2/93

C. K. Tudor
8/2/93

I HEREBY CERTIFY THAT THIS BOUNDARY SURVEY, TO THE
BEST OF MY KNOWLEDGE AND BELIEF IS CORRECT AND COMPLIES
WITH THE MINIMUM PROCEDURES AND STANDARDS ESTABLISHED
BY THE VIRGINIA STATE BOARD OF ARCHITECTS, PROFESSIONAL
ENGINEERS, LAND SURVEYORS, AND CERTIFIED LANDSCAPE
ARCHITECTS.

C. K. Tudor

C. K. TUDOR C.E. & C.L.S.