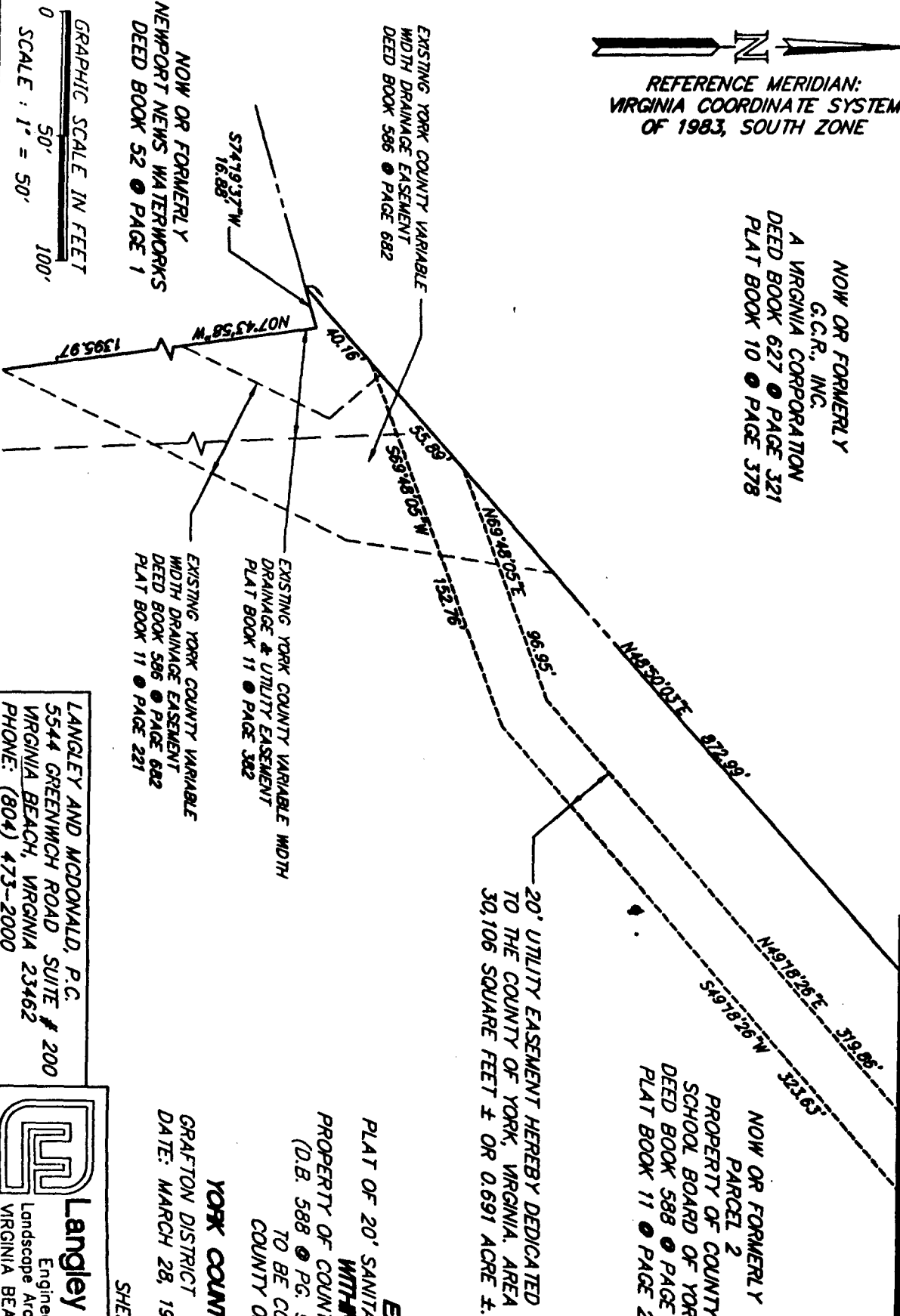


BK0900PG0607



REFERENCE MERIDIAN:
VIRGINIA COORDINATE SYSTEM
OF 1983, SOUTH ZONE

NOW OR FORMERLY
G.C.R., INC.
A VIRGINIA CORPORATION
DEED BOOK 627 ● PAGE 321
PLAT BOOK 10 ● PAGE 378



NOW OR FORMERLY
NEWPORT NEWS WATERWORKS
DEED BOOK 52 ● PAGE 1

GRAPHIC SCALE IN FEET
0 50' 100'
SCALE : 1" = 50'

EXISTING YORK COUNTY VARIABLE
WIDTH DRAINAGE EASEMENT
DEED BOOK 586 ● PAGE 682
PLAT BOOK 11 ● PAGE 221

EXISTING YORK COUNTY VARIABLE
DRAINAGE & UTILITY EASEMENT
PLAT BOOK 11 ● PAGE 382

20' UTILITY EASEMENT HEREBY DEDICATED
TO THE COUNTY OF YORK, VIRGINIA, AREA =
30,106 SQUARE FEET ± OR 0.691 ACRE ±.

NOW OR FORMERLY
PARCEL 2
PROPERTY OF COUNTY
SCHOOL BOARD OF YORK
DEED BOOK 588 ● PAGE 97
PLAT BOOK 11 ● PAGE 227

MATCH LINE (SEE SHEET 2 OF 4)

LANGLEY AND McDONALD, P.C.
5544 GREENWICH ROAD SUITE # 200
VIRGINIA BEACH, VIRGINIA 23462
PHONE: (804) 473-2000



Langley and McDonald, P.C.
Engineers · Surveyors · Planners
Landscape Architects · Environmental Consultants
WILLIAMSBURG
VIRGINIA BEACH

DRAWN BY : ALP

PROJECT NO. : 93099-0255

EXHIBT A
PLAT OF 20' SANITARY SEWER MAIN EASEMENT
WITHIN PARCEL 2
PROPERTY OF COUNTY SCHOOL BOARD OF YORK
(D.B. 588 ● PG. 97 & P.B. 11 ● PG. 227)
TO BE CONVEYED TO THE
COUNTY OF YORK, VIRGINIA
FROM
YORK COUNTY SCHOOL BOARD
GRAFTON DISTRICT - YORK COUNTY, VIRGINIA
DATE: MARCH 28, 1996 SCALE: 1" = 50'
SHEET 1 OF 4

