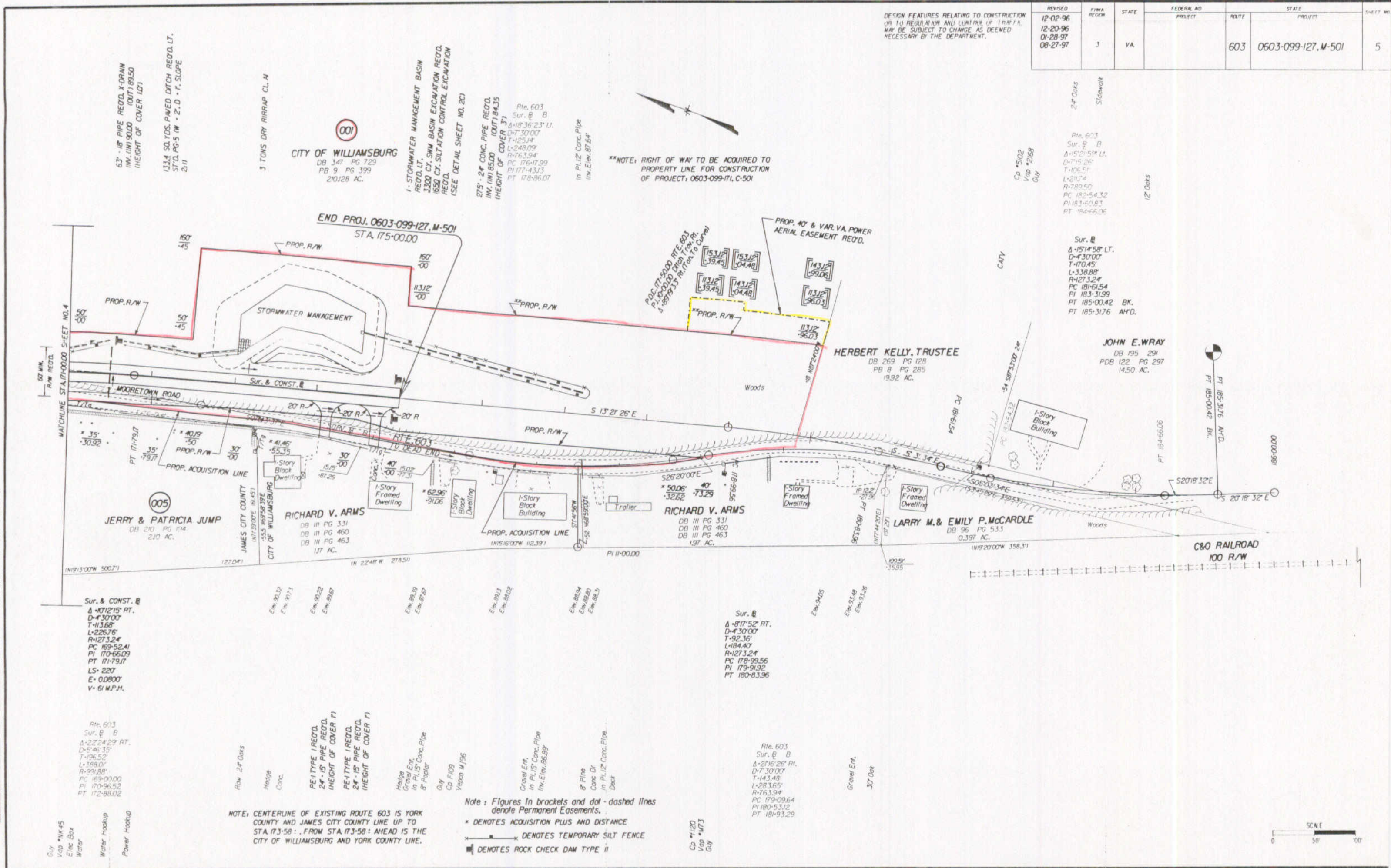


SUFFOLK DISTRICT DESIGN UNIT

REVISED	FHWA REGION	STATE	FEDERAL NO PROJECT	ROUTE	STATE PROJECT	SHEET NO
12-02-96 12-20-96 01-28-97 08-27-97	3	VA	603	0603-099-127, M-501	5	

DESIGN FEATURES RELATING TO CONSTRUCTION OF THIS REGULATION AND CONTROL OF TRAFFIC MAY BE SUBJECT TO CHANGE AS DEEMED NECESSARY BY THE DEPARTMENT.



SUPERVISED BY E.A. HOLLOWELL
DESIGNED BY D.B. WINSLOW
CADD OPERATOR T.H.
REVISED BY

PLAN	DATE	BY	CHKD
175			
180			
185			

Sur. & CONST. B
Δ-1012'15" RT.
D-4'30"00"
T-11'31.68"
L-226'76"
R-1273.24"
PC 169-52.41
PI 170-66.09
PT 171-79.17
LS-220'
E-0.0800'
V-61 M.P.H.

Rte. 603
Sur. B
Δ-2224'23" RT.
D-4'46'15"
T-196.52'
L-398.07'
R-291.88'
PC 169-00.00
PI 170-96.52
PT 172-88.02

Sur. B
Δ-817'52" RT.
D-4'30"00"
T-92'36"
L-184.40'
R-1273.24"
PC 178-99.56
PI 179-91.92
PT 180-83.96

Rte. 603
Sur. B
Δ-2116'26" RT.
D-7'30"00"
T-143.48'
L-283.65'
R-763.94'
PC 179-09.64
PI 180-53.12
PT 181-93.29

Row 24 Oaks
Hedge Conc.
PE-1 TYPE I RECD.
24" 15" PIPE RECD.
HEIGHT OF COVER 11"
PE-1 TYPE I RECD.
24" 15" PIPE RECD.
HEIGHT OF COVER 11"

Hedge Conc. Ent. In P.I. 15' Conc. Pipe B' Pile
Guy
Cp F109
Visco M/196
Gravel Ent. In P.I. 15' Conc. Pipe In. Elev. 86.87'
B' Pipe
Cone Dr
In P.I. 12' Conc. Pipe Deck

NOTE: CENTERLINE OF EXISTING ROUTE 603 IS YORK COUNTY AND JAMES CITY COUNTY LINE UP TO STA 173-58. FROM STA. 173-58: AHEAD IS THE CITY OF WILLIAMSBURG AND YORK COUNTY LINE.
Note: Figures in brackets and dot-dashed lines denote Permanent Easements.
* DENOTES ACQUISITION PLUS AND DISTANCE
- - - DENOTES TEMPORARY SILT FENCE
■ DENOTES ROCK CHECK DAM TYPE II

