

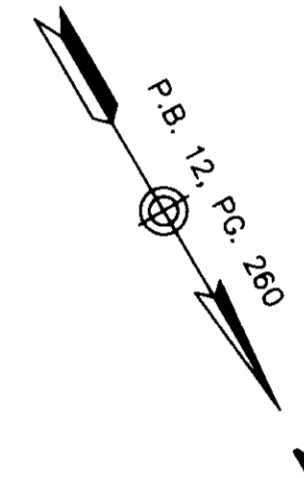
SUBDIVISION OF
PARCEL E
 BEING THE PROPERTY OF
 SHADY BANKS LAND, L.L.C.
 A VIRGINIA LIMITED LIABILITY COMPANY
 BETHEL MAGISTERIAL DISTRICT
 COUNTY OF YORK, VIRGINIA

DATE: 10/17/03 SHEET 2 OF 3 SCALE: 1"=30'

PROJECT NO: 31514.00 DRAWN BY: DWP

VHB Vanasse Hangen Brustlin, Inc.
 Transportation Land Development Environmental Services
 11832 Rock Landing Drive, Suite 203
 Newport News, Virginia 23606-4231
 (757) 873-3386 • FAX (757) 873-0757

REVISION: 08/05/04



Legend

NOW OR FORMERLY
 LITCHFIELD SHADY BANKS, LLC
 (INSTRUMENT NUMBER 000010208)
 PARCEL D
 (P.B. 12, PG. 260)
 TAX PARCEL NO. 38A1-09-00-000D
 GPIN U02D-4828-2010

- D.B. DEED BOOK
- P.B. PLAT BOOK
- PG. PAGE
- S.F. SQUARE FEET
- IRON PIN FOUND
- IRON PIN SET

Approved:
York County Board Of Supervisors

BY: *Al Maddalena*
 PLAT APPROVING AGENT

DATE: *8/16/04*

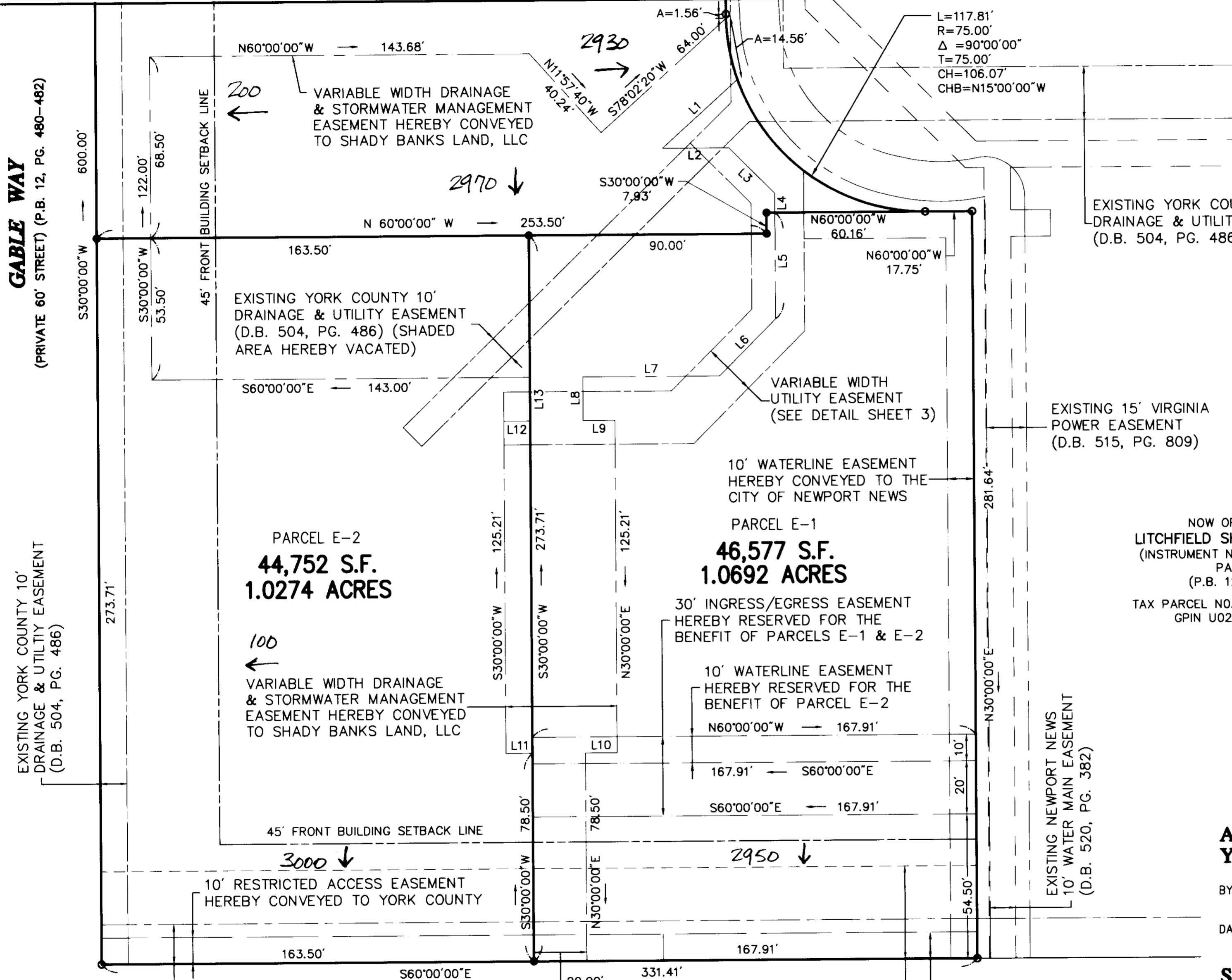
State Of Virginia
County Of York

IN THE CLERK'S OFFICE OF THE CIRCUIT COURT FOR THE COUNTY OF YORK, THE
 8th DAY OF *SEP*, 2004. THIS MAP WAS PRESENTED AND ADMITTED TO
 RECORD AS THE LAW DIRECTS AS INSTRUMENT NUMBER *040019164*

TESTE: *Lym S. Jenkins*
 CLERK

BY: *Melina Cason D.C.*

MATCHLINE - SEE SHEET 3



HAMPTON HIGHWAY
 (STATE ROUTE 134)
 (160' RIGHT-OF-WAY)

