

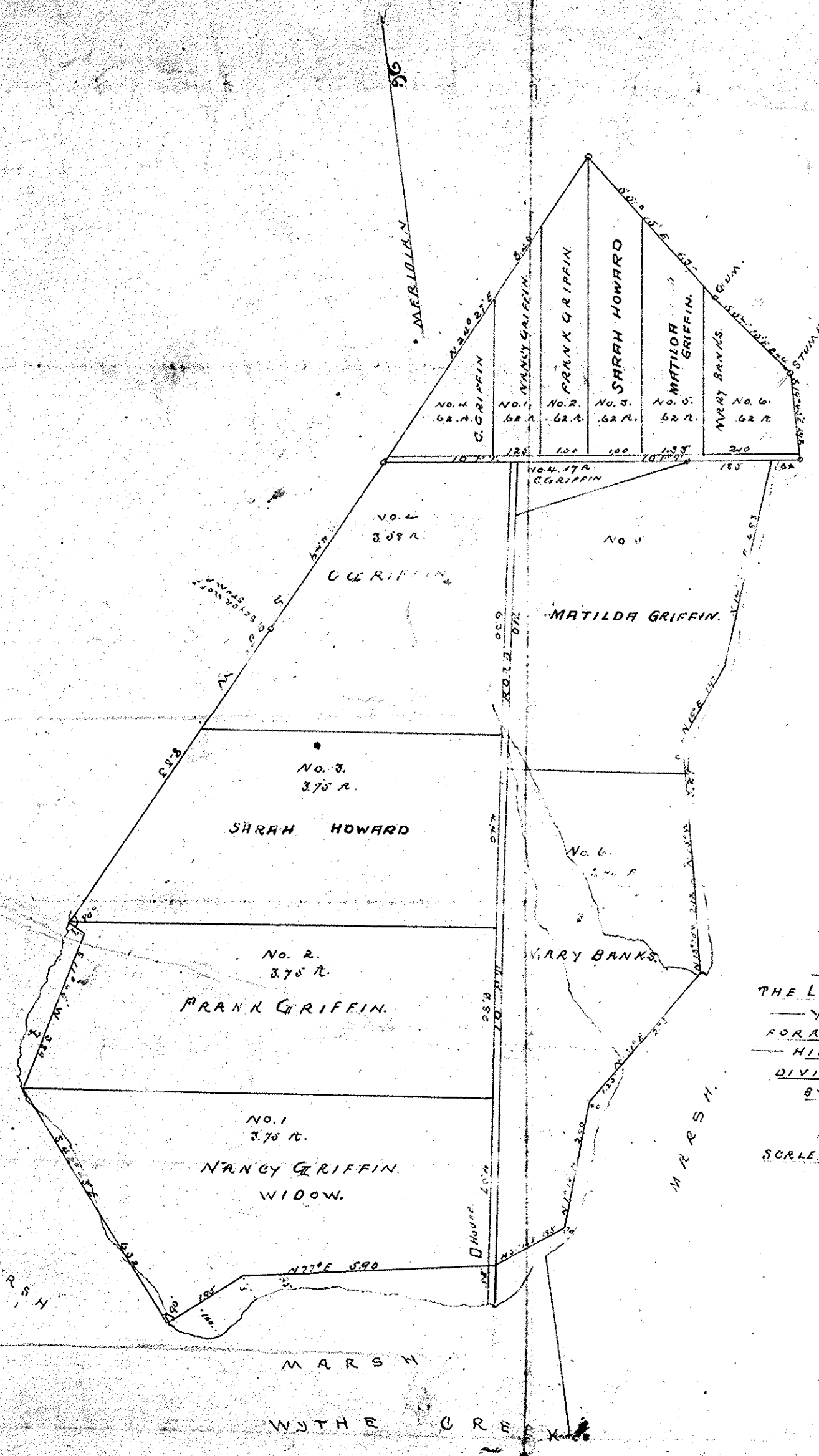
A plot of 15.48 acres of land situated in  
 Jefferson District North County Va. lying on Chesnut  
 Creek & Cabin Creek, sold by W. H. Hornsby to  
 James Lee Co. Inc. Surveyed off for the said W. H.  
 Hornsby by Legary Smith, Surveyor for North County, May  
 25<sup>th</sup> 24, 1912. The 15.48 acre plot of W. H. Hornsby on the  
 plat was not surveyed out by the Surveyor, as the  
 said acreage in reference to the scale of the plat, but it  
 is empty marked on the plat as a memorandum  
 given to show that the parties are to have each a  
 part of W. H. Hornsby's 15.48 acre tract over the other side  
 of the said Hornsby to the Main Road. The said scale of  
 W. H. Hornsby is to be located at such convenient points to be  
 agreed upon by the parties to be used in accordance  
 by all the parties.

Given under my hand this 20<sup>th</sup> day of May 1912  
 Legary Smith  
 Surveyor for North County

State of Virginia to wit  
 In the Office of the Clerk of the Circuit Court of North County  
 the 2<sup>nd</sup> day of June 1912. This plat was presented and  
 admitted to record.

Teste  
 J. S. Buchanan, Clerk

No.	Acres	Area
1	3.76	in Chesnut Creek
2	3.75	in Chesnut Creek
3	3.75	in Chesnut Creek
4	3.75	in Chesnut Creek
5	3.75	in Chesnut Creek
6	3.75	in Chesnut Creek
7	3.75	in Chesnut Creek
8	3.75	in Chesnut Creek
9	3.75	in Chesnut Creek
10	3.75	in Chesnut Creek
11	3.75	in Chesnut Creek
12	3.75	in Chesnut Creek
13	3.75	in Chesnut Creek
14	3.75	in Chesnut Creek
15	3.75	in Chesnut Creek
16	3.75	in Chesnut Creek
17	3.75	in Chesnut Creek
18	3.75	in Chesnut Creek
19	3.75	in Chesnut Creek
20	3.75	in Chesnut Creek



PLAT OF  
 THE LAND OF JAS. GRIFFIN DECD  
 YORK COUNTY VA.  
 FOR A PARTITION BETWEEN  
 HIS WIDOW AND HEIRS  
 DIVIDED AS PER PLAT  
 BY MUTUAL CONSENT.  
 E. A. SEMPLER  
 S. E.  
 SCALE 20 CHS = ONE INCH.  
 DEC 16 1898