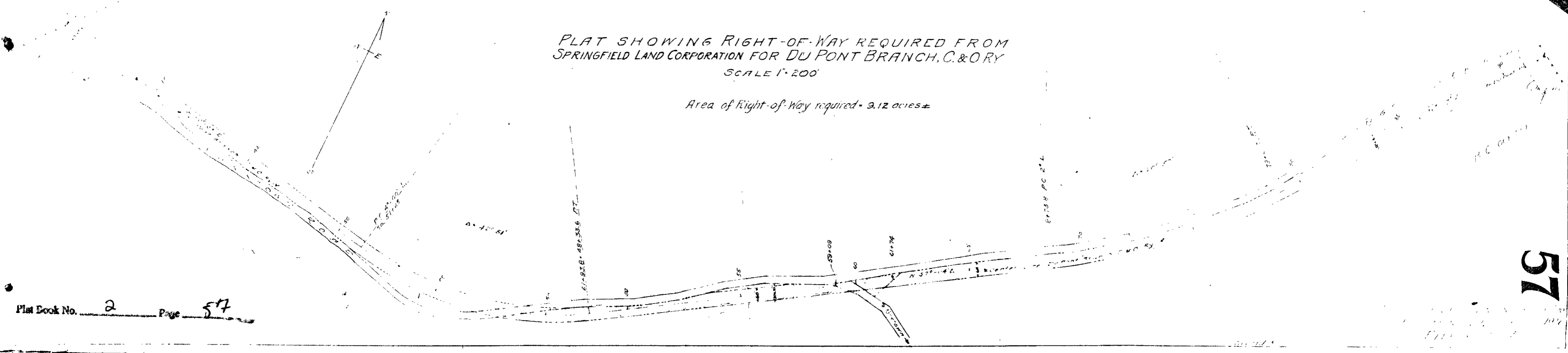


Page 57

PLAT SHOWING RIGHT-OF-WAY REQUIRED FROM  
SPRINGFIELD LAND CORPORATION FOR DU PONT BRANCH, C.&O.RY  
SCALE 1"=200'

Area of Right-of-Way required - 9.12 acres ±



Plat Book No. 2 Page 57

57