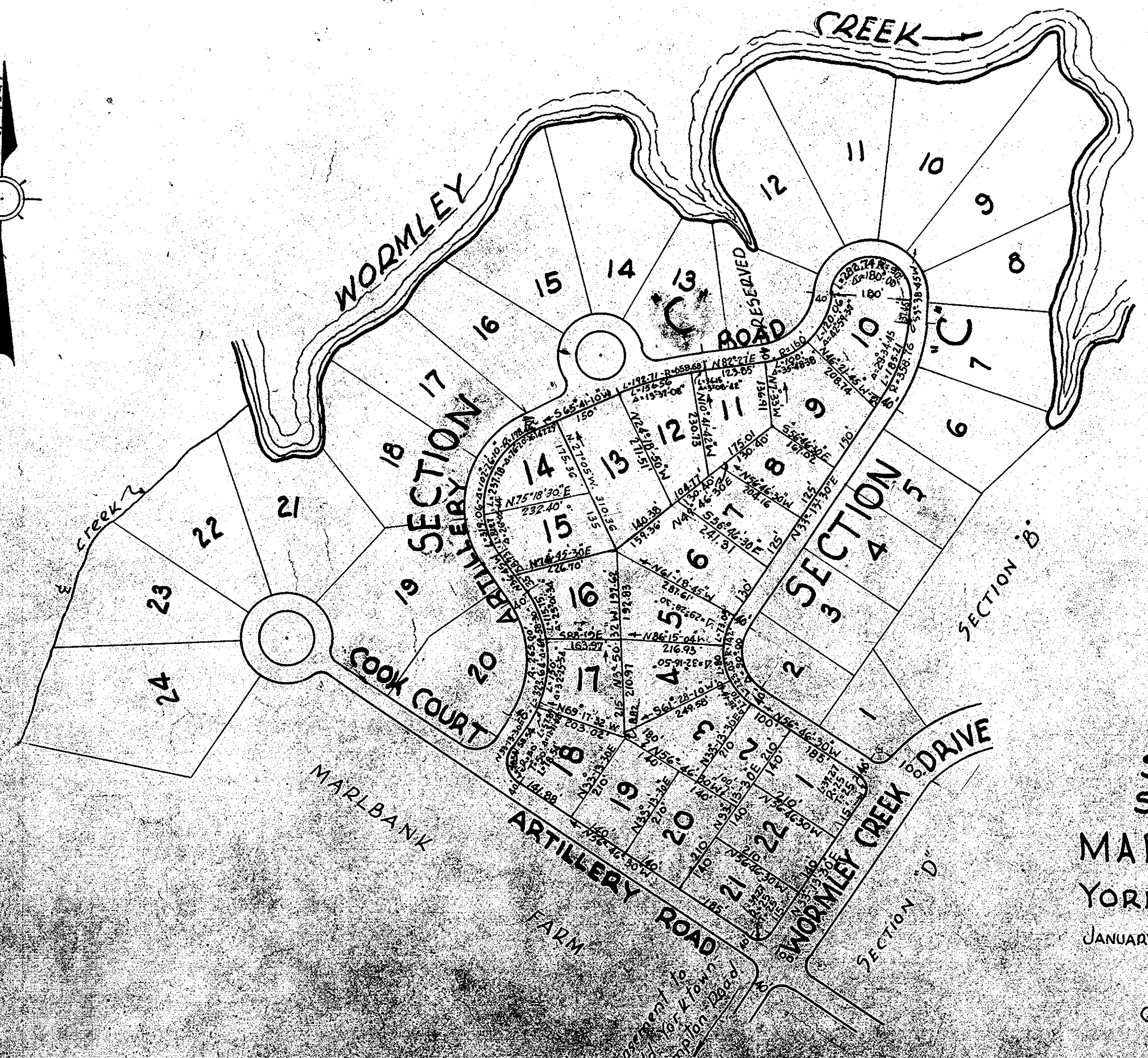


Bearings are magnetic as of 1947

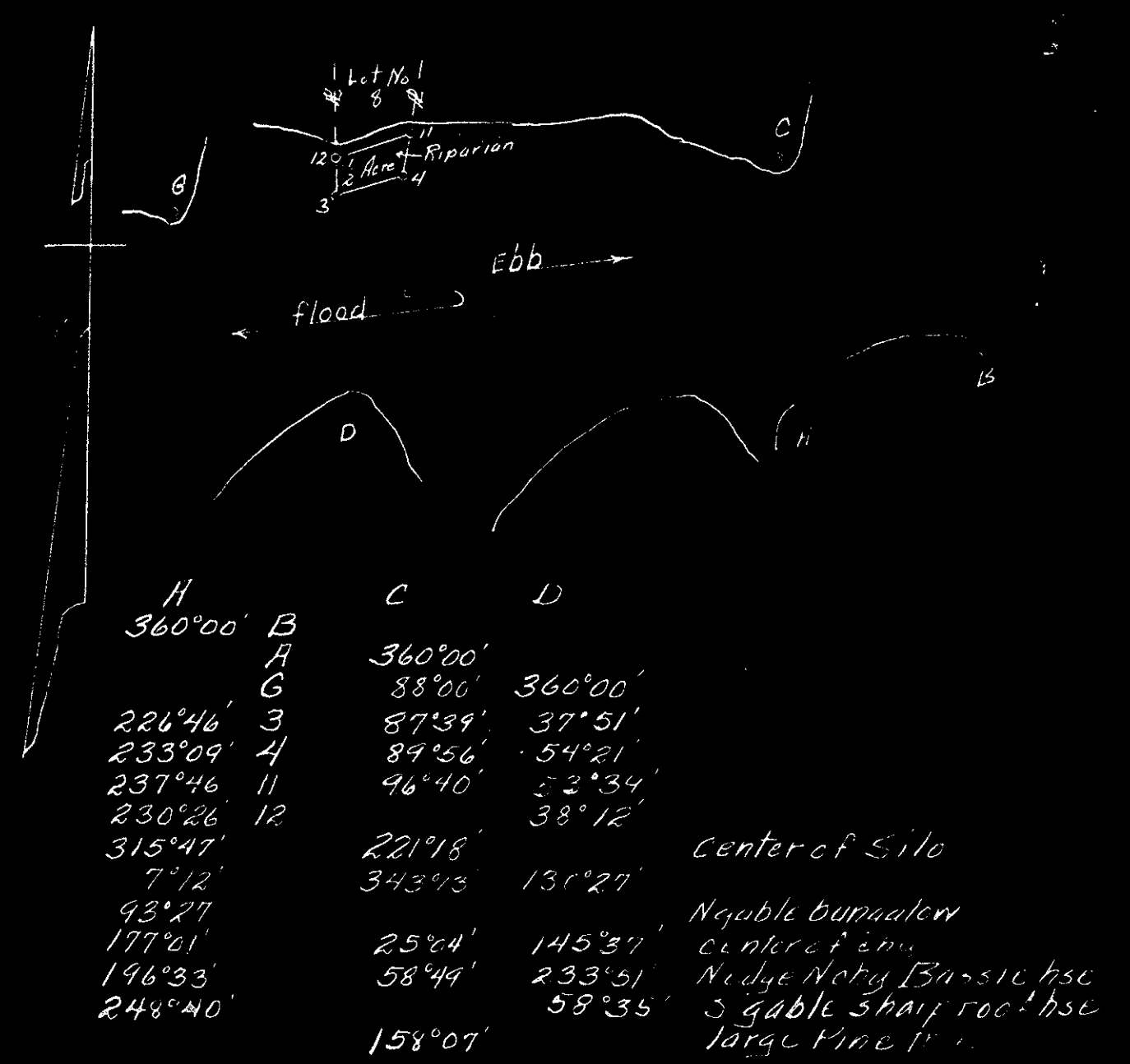


MAP OF SECTION "G" SUBDIVISION OF MARLBANK FARM YORK COUNTY, VIRGINIA. JANUARY 20, 1953 SCALE 1"=200'

J TEMPLE WADDILL CERTIFIED CIVIL ENGINEER RICHMOND, VIRGINIA.



DATE OF APPLICATION	<b>COMMONWEALTH OF VIRGINIA COMMISSION OF FISHERIES</b>	FOR OFFICE USE
DATE OF ASSIGNMENT		PLAT NO.
COUNTY RECORDED IN		MAP NO. 241
BOOK PAGE		FILE NO.



See Oyster Plat in Transfer Bk. No. 3 page 387

M. J. Queijo  
Riparian  
OYSTER PLANTING GROUND  
Y. B. Dorothy Mae Nelson  
Chesumans Creek  
District No. 15 York County, Virginia  
Scale 5000  
Surveyed by M. J. Queijo, 11/15/52