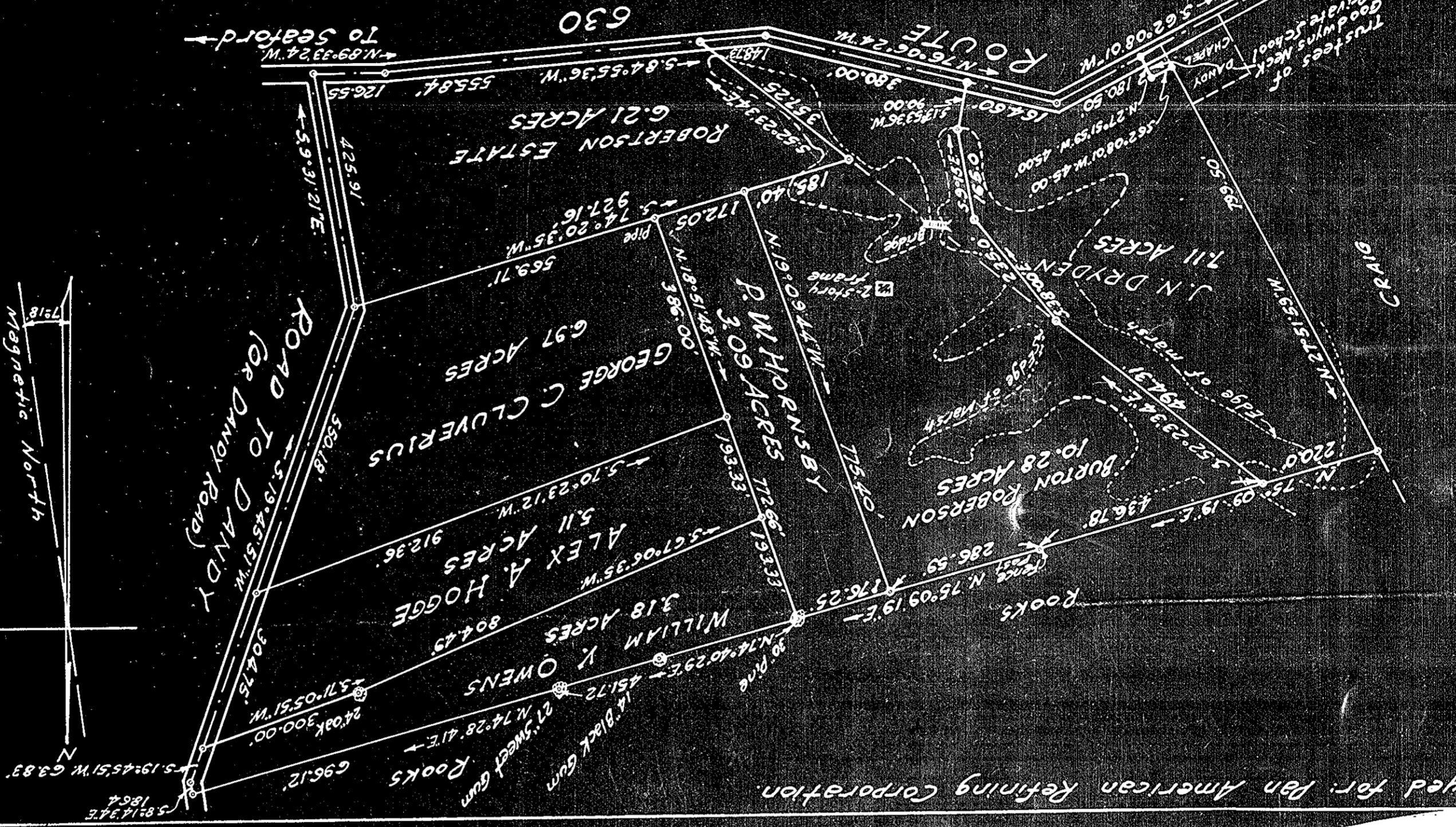


MAP SHOWING PROPERTY SITUATED AT GOODWYN'S NECK IN GRAFTON DISTRICT YORK COUNTY, VIRGINIA STANDING IN THE NAME OF AS SHOWN

J. TEMPLE WADDILL
CERTIFIED CIVIL ENGINEER
RICHMOND, VIRGINIA

JAN. 5, 1953
SCALE: 1"=200'

Bearings refer to the plane coordinate system of the State of Va.



Surveyed for Pan American Refining Corporation

YORK RIVER



Bearings refer to the plane coordinate system of the State of Va.

Plat Book No. 5 Page 144

MAP SHOWING PROPERTY SITUATED AT GOODWYN'S NECK IN YORK COUNTY, VIRGINIA STANDING IN THE NAME OF THOMAS M. EUBANK

SCALE: 1"=200'
JULY 1953
Surveyed for Pan American Refining Corporation
J. TEMPLE WADDILL
CERTIFIED CIVIL ENGINEER
RICHMOND, VIRGINIA

