

APPROVED
 YORK COUNTY BOARD OF SUPERVISORS
 BY *A. J. Gunning*
 PLAT BOOK NO. 5 PAGE 220

VARIATIONS APPROVED
 DATE 1-19-55
 BY *A. J. Gunning*
 PLAT BOOK NO. 5 PAGE 220

DATE 1-19-55
 BY *A. J. Gunning*
 PLAT BOOK NO. 5 PAGE 220

Property
 This area to be left open as part of road
 Old Iron Pipe Beadly Placed New One Placed Beside It.

Club Property
 Iron Pipe Old Marker
 N 75° 26' E 531.70'

Approximate
 1 2 3 4 5 6 7 8 9 10 11 12 13 14 15 16 17 18 19 20
 200' 197' 194' 181.125' 168.25' 155.375' 142.5' 129.625' 116.75' 91' 200' 180' 175' 175' 175' 175' 175' 175' 175' 175' 175'

Chesapeake Bay
 Mean Low Water
 Magnetic 1931

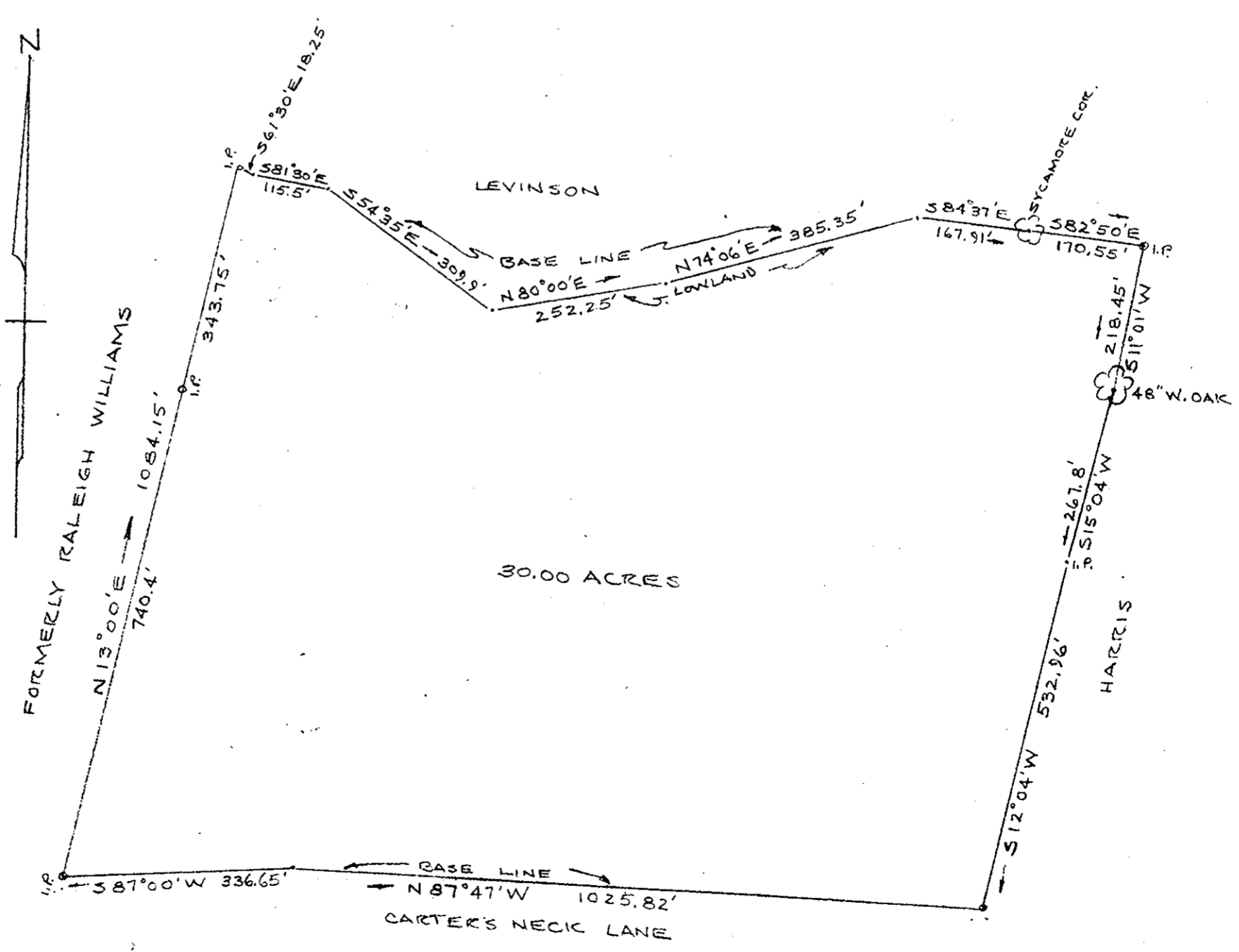
o - Indicates Iron Pipe Marker Lot or Property Corner or in Lot Line.

PLAT
 of
 Subdivision of Part of Property of
 Charles S. Withrow
 in
 Grafton District, York County, Va.
 Showing Original Subdivision
 Consisting of Lots Numbered 1 to 20
 Made by Franklin R. Murray, C.E.
 Jan. 28, 1950.
 Lots 1a, 1b & 11 to 20 inc. Added
 Nov. 10, 1955.
 All Lots 75' Wide
 Scale 1" = 200' O.H. Weiss

Filed in the Clerk's Office the 24th day of March 1956
 Teste
Walter D. Thomas
 Clerk

Filed in the Clerk's Office the 24th day of March 1956
 Teste
Walter D. Thomas
 Clerk

Plat Book No. 5 Page 220



PLAT SHOWING PARCEL OF LAND BELONGING TO JOHN BOZARTH IN THE CARTER'S NECK SECTION SITUATED IN BRUTON DISTRICT, YORK COUNTY, VA. SURVEYED MARCH, 1957 SCALE 1" = 200'

Filed in the Clerk's Office the 20 day of April, 1957

Teste:
 MELVILLE I. BRYANT, Clerk
Melville I. Bryant D.C.



Sig. *Walter D. Thomas*