

**LEGEND**  
 ■ concrete monument  
 ○ iron pipe

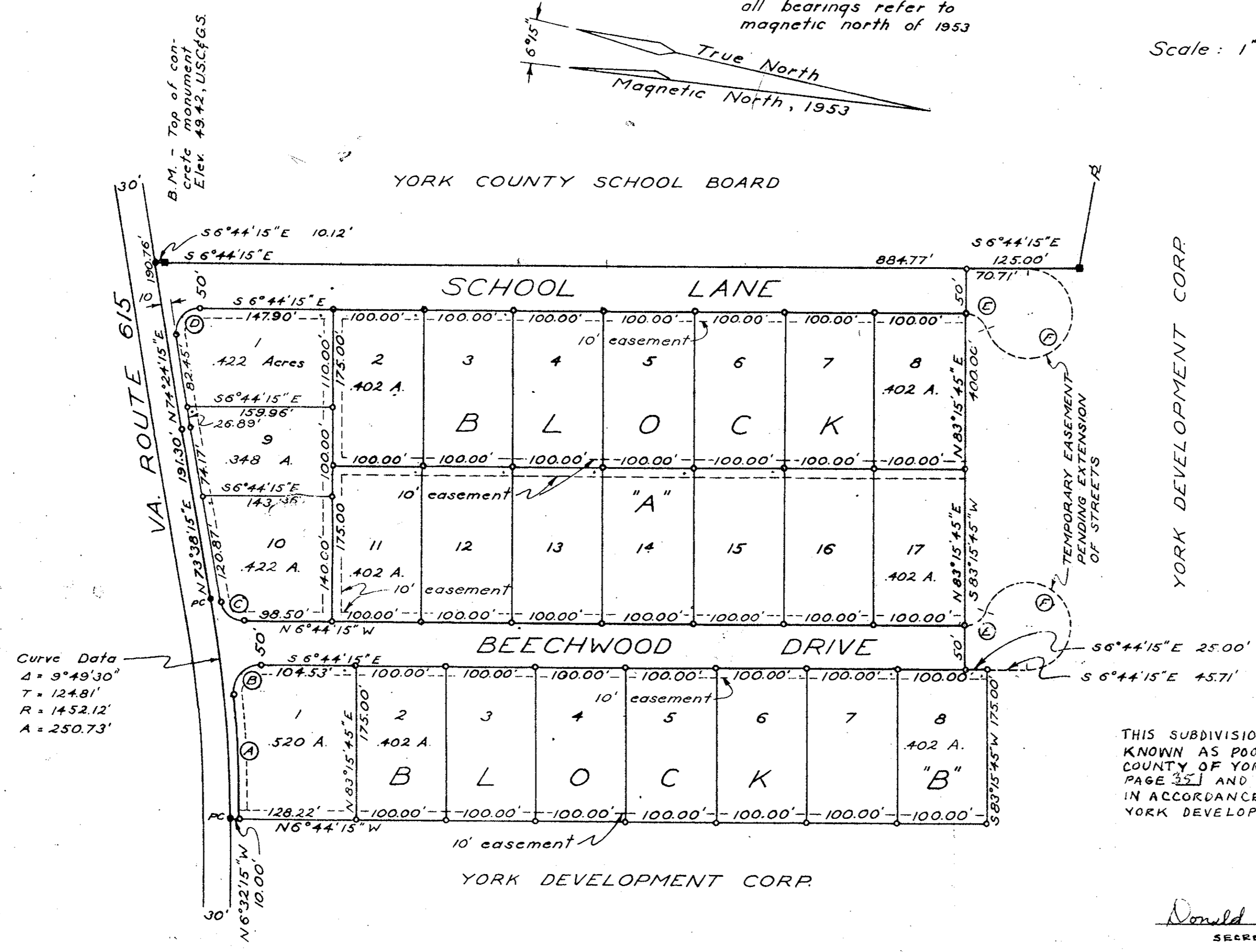
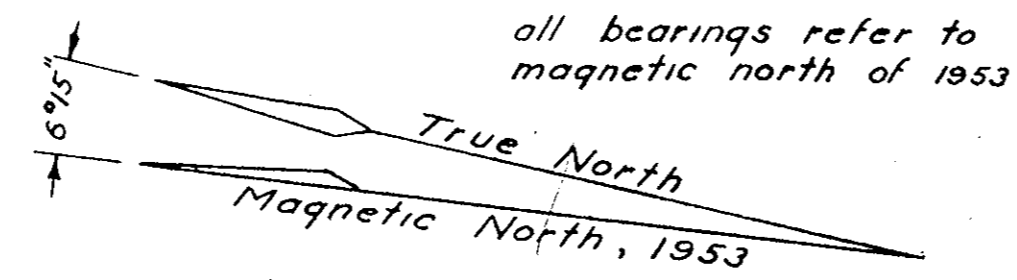
# HARWOOD MILL - SECTION A

A SUBDIVISION OF THE PROPERTY OF  
 THE YORK DEVELOPMENT CORPORATION  
 GRAFTON DISTRICT  
 YORK COUNTY  
 VIRGINIA

Scale: 1" = 100'

Date: APRIL 10, 1956

Wetherill D. Thomas  
 Certified Land Surveyor  
 Williamsburg Virginia



**CURVE DATA**

Curve	Angle	Tangent	Radius	Area
A	53°20'	71.16'	1462.12'	142.19'
B	95°22'20"	33.16'	30.19'	50.25'
C	80°22'30"	21.12'	25.00'	35.07'
D	98°51'30"	29.20'	25.00'	43.14'
E	70°31'45"	17.68'	25.00'	30.77'
F	250°31'45"	-	50.00'	218.63'

Curve Data  
 Δ = 9°49'30"  
 T = 124.81'  
 R = 1452.12'  
 A = 250.73'

THIS SUBDIVISION IS A PART OF WHAT WAS FORMERLY KNOWN AS POORHOUSE FARM ACQUIRED FROM THE COUNTY OF YORK BY DEED RECORDED IN DEED BOOK 100, PAGE 351 AND IS MADE WITH THE FULL CONSENT AND IN ACCORDANCE WITH THE DECISION OF ITS OWNERS, YORK DEVELOPMENT CORPORATION.

YORK DEVELOPMENT CORPORATION

BY *John P. Robinson*  
 PRESIDENT

*Donald D. Bauls*  
 SECRETARY

*Witness to and subscribed before me this 10th day of June, 1956. Edith M. Woods, Notary Public*

TO THE BEST OF MY KNOWLEDGE AND BELIEF THIS PLAT AND SURVEY MEET ALL THE REQUIREMENTS OF THE YORK COUNTY SUBDIVISION ORDINANCE.

*Wetherill D. Thomas*

Filed in the Clerk's Office the 28 day of June, 1956  
*William D. Bryant* Clerk  
 D.C.



*Wetherill D. Thomas*

**APPROVED**  
 YORK COUNTY BOARD OF SUPERVISORS  
 BY *A. T. Jennings*  
 PLAT APPROVING AGENT  
 DATE June 14, 1956  
 VARIATIONS APPROVED  
 DATE