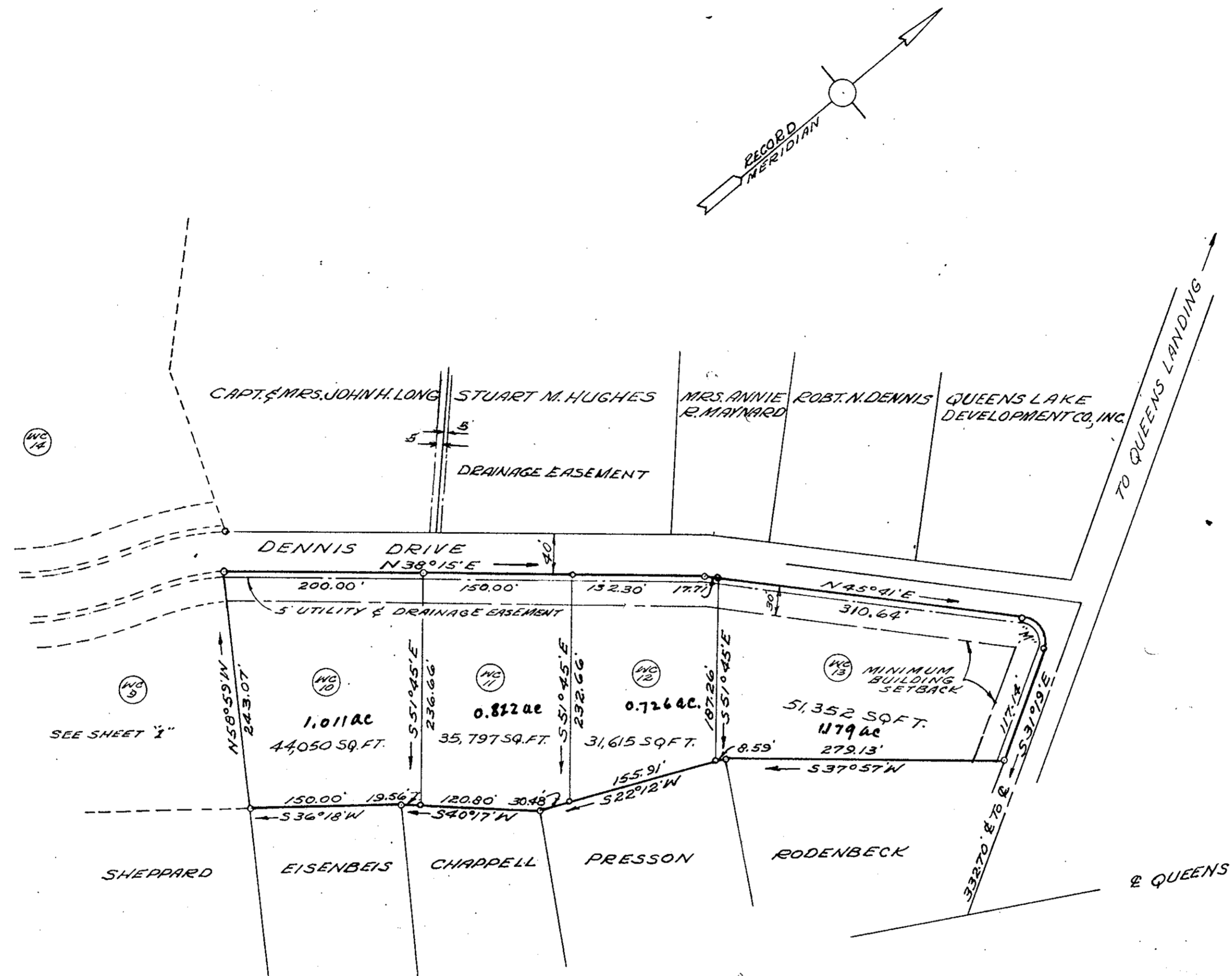


QUEENS LAKE DEVELOPMENT CO., INC.

CURVE TABLE				
NO.	DELTA	RADIUS	TANGENT	LENGTH
A	90°00'	25.00'	25.00'	39.27'
B	2°56'	379.03'	9.70'	19.40'
C	19°37'	379.03'	65.64'	129.77'
D	24°30'	164.23'	35.66'	70.23'
E	24°06'30"	204.23'	43.61'	85.93'
F	22°33'	339.03'	67.59'	133.43'
G	10°00'	380.00'	33.25'	66.32'
H	10°00'	420.00'	36.74'	73.30'
J	10°00'	420.00'	36.74'	73.30'
K	10°00'	460.00'	40.24'	80.28'
L	10°00'	839.19'	73.42'	146.46'
M	103°00'	25.00'	31.42'	44.94'



Filed in the Clerk's Office this 9th day of March, 1960.

Teste: MELVILLE I. BRYANT, Clerk
Melville I. Bryant D.C.

APPROVED
 YORK COUNTY BOARD OF SUPERVISORS
 BY *William Schaffner*
 PLAT APPROVER'S AGENT.
 DATE *March 9, 1960*
 VARIATIONS APPROVED
 DATE _____

Plat Book No. 6 Page 81

QUEENS LAKE
 SECTION "WC"
 PART "1"
 QUEENS LAKE DEVELOPMENT CO., INC. (OWNER),
 BRANTON DISTRICT,
 YORK COUNTY, VIRGINIA,
 SCALE 1" = 100', FEB. 27, 1960. SHEET 2 OF 2

McMANUS, MROCK & McMANUS
 CIVIL ENGINEERS - LAND SURVEYORS
 WILLIAMSBURG, VIRGINIA.

TOTAL Acreage Part 1, Sheet 2, 3.728 ac