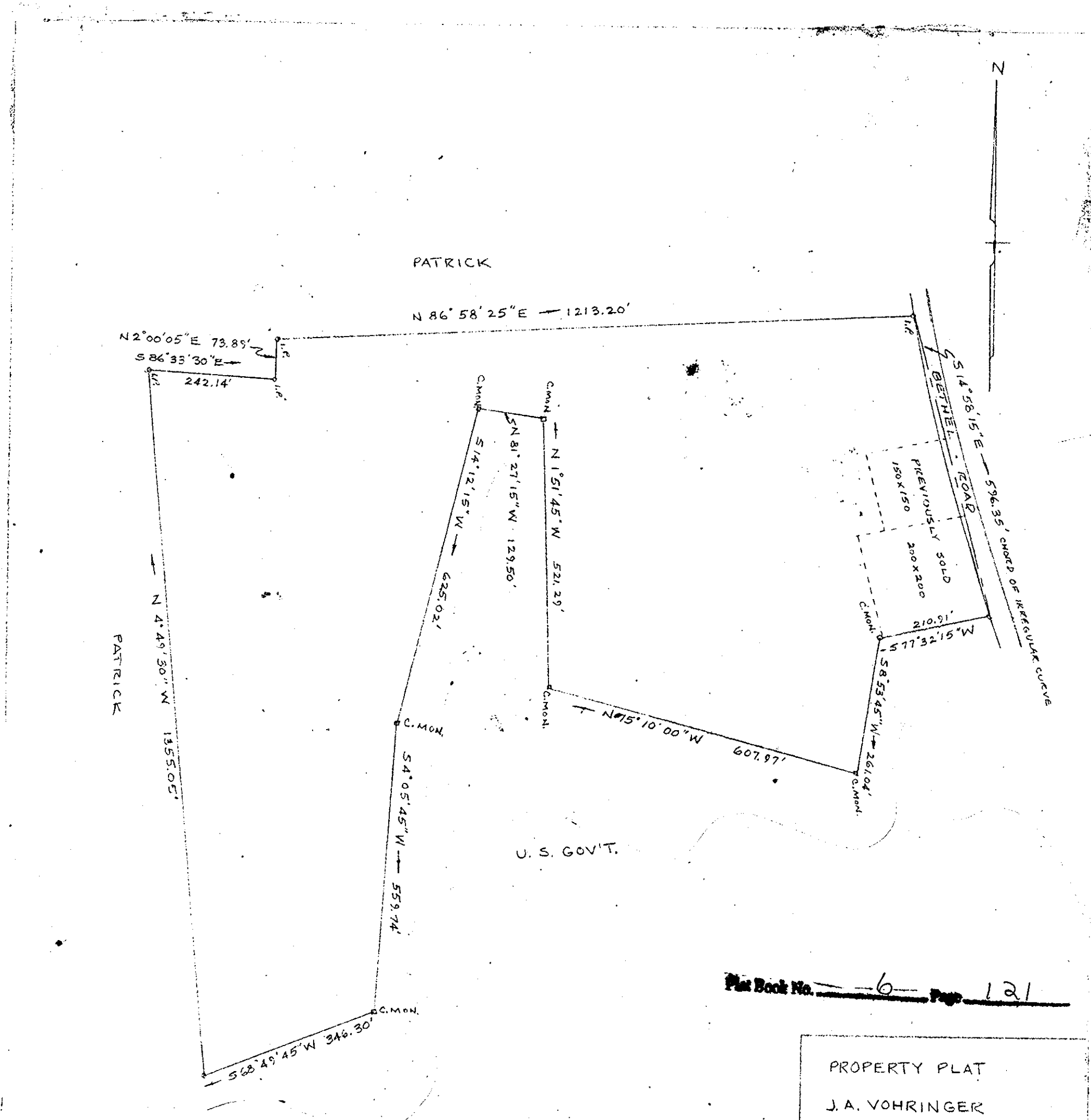


PLAT SHOWING PROPERTY OF
FLORENCE GRAVES
VERNA A. & JOSIE E. HANSFORD
BEING LOCATED ON STATE ROUTES #718 & #673
SEAFORD, YORK COUNTY, VIRGINIA

SCALE: 1" = 60' APRIL 7, 1961

S. J. GLASS & ASSOCIATES
ENGINEERING SERVICES - HAMPTON, VIRGINIA

Recorded in Clerk's Office April 11, 1961 - 148, p. 521
Melville I. Bryant, Clerk



Filed in the Clerk's Office the 7th day of March, 1961

Teste:
Melville I. Bryant, Clerk
Melville I. Bryant D.B.

PROPERTY PLAT
J.A. VOHRINGER
YORK COUNTY, VA.
FEB, 1958 SCALE 1"=200'
TOTAL ACREAGE - 27.64
TOTAL ACREAGE PREVIOUSLY SOLD
LOTS APPROX. - 1.40
Wetherill D. Thomas C.S. 579