

CHARLIE AND MARGARET LEE PATTERSON

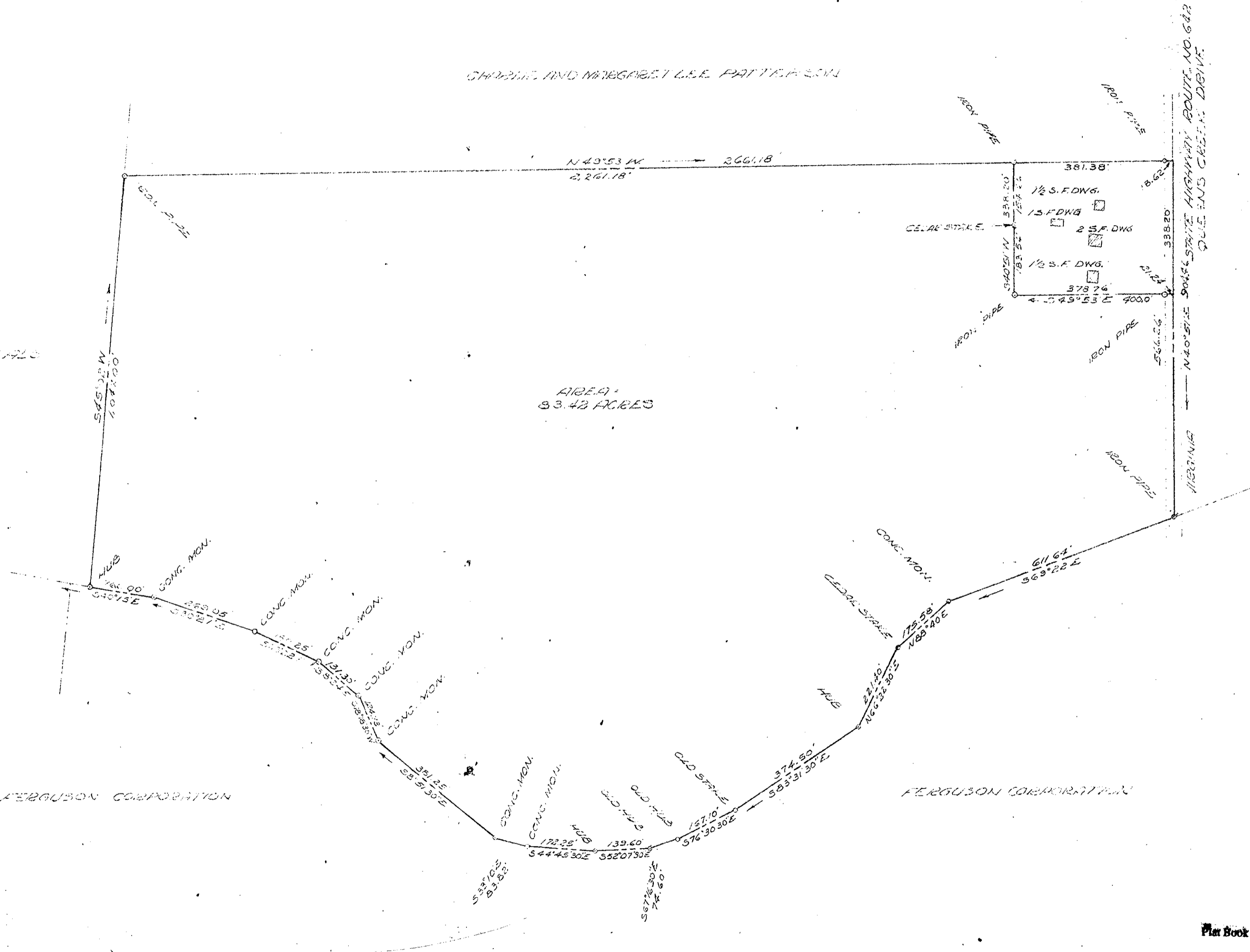
ROBERT T ARMISTEAD ET AL

UNITED STATES GOVERNMENT

FERGUSON CORPORATION

FERGUSON CORPORATION

AREA - 83.42 ACRES



Plat Book No. 6 Page 125

PLAT SHOWING SURVEY OF
 PART OF THE "VINEYARD TRACT"
 FOR VIRGINIA TRUST COMPANY AND
 ANNE BALLARD CUTLER
 CO-EXECUTORS UNDER THE WILL OF
 VIRGINIA B. HOUGHYOUT, DECEASED
 BRITTON DISTRICT
 YORK COUNTY
 VIRGINIA
 SCALE 1" = 200' DEC. 20, 1958

Filed in the Clerk's Office the 8 day of March, 1961

Teste:
 MELVILLE L. BRYANT, Clerk
Edith M. Hardy D.C.

M^o MANUS MEOCK & M^o MANUS
 CIVIL ENGINEERS - LAND SURVEYORS
 WYOMINGBURG, VIRGINIA
 BY *Edith M. Hardy* REG NO 606

Sarah H. Armistead See Plat Book 147, p. 650

REV. FEB 24 1961
 REV. MAY 11 1959 - 344, 110650 -
 N862P53
 N862P25