

PARTITION PLAT OF SURVEY

10.71 ACRES OF
 MUSE, EST.
 NELSON DIST., YORK CO., VA.

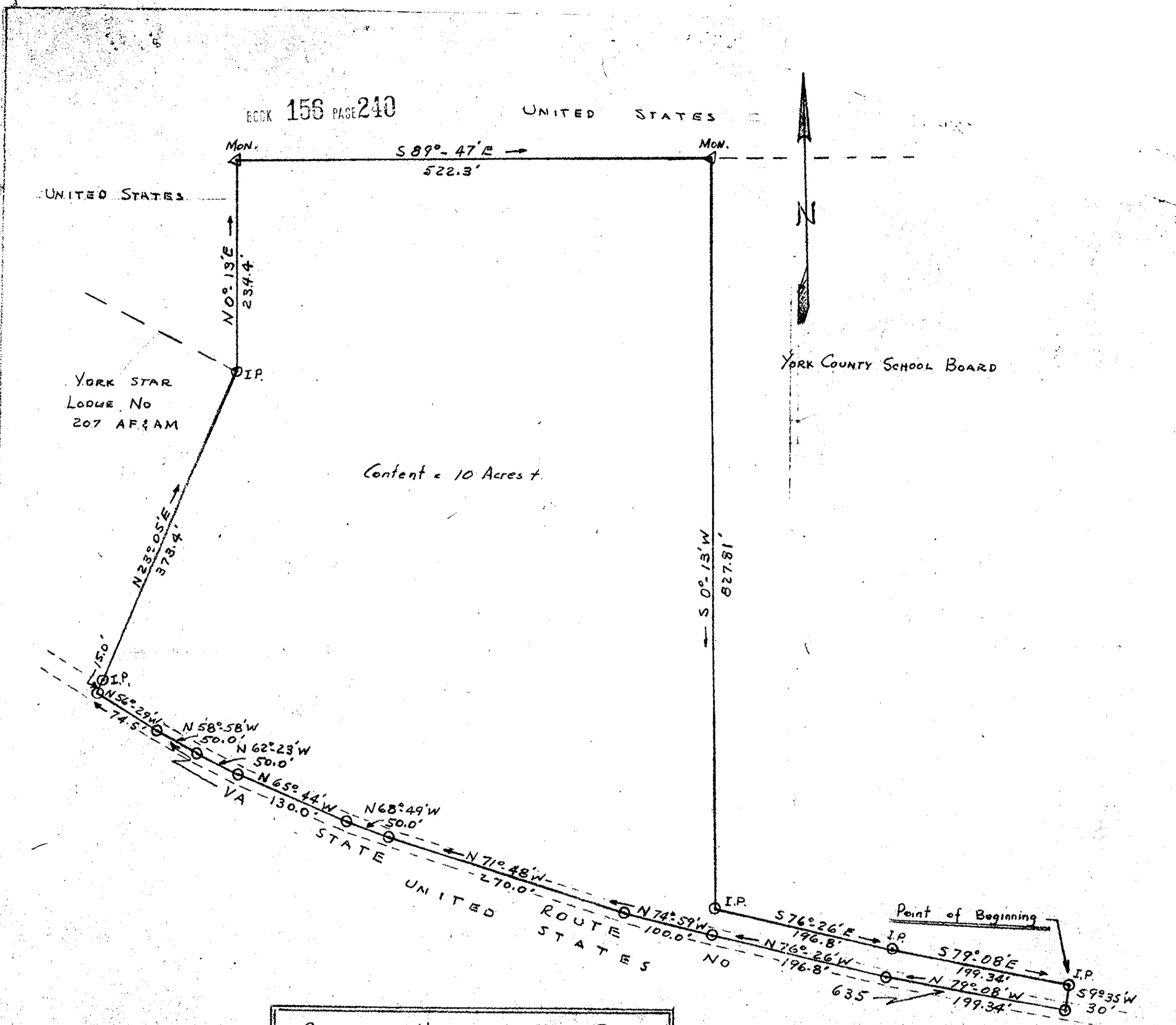
Scale: 1" = 100'

14 FEB. 1962

Plat Book No. 6 Page 175

Filed in the Clerk's Office the 3rd day of April 1962 by

Teste: MELVILLE I. BRYANT, Clerk



COLONIAL NATIONAL HIST. PARK
 PLAT SHOWING TRACT OF LAND TO BE
 CONVEYED TO MARGARET BURCHER
 SCALE 1" = 100' SURVEYED T.L. ROBINETTE
 PARK ENGR.
 REVISED Oct. 25, 1961

Filed in the Clerk's Office the 23 day of Feb. 1962 DING No. NHP-COL 2405

Teste: MELVILLE I. BRYANT, Clerk

Plat Book No. 6 Page 175

See PA 156-P-237

CHECKED AND CERTIFIED BY VINCENT D. MCKENNA
 JANUARY 29 1962

VINCENT D. MCKENNA
 WILLIAMSBURG, VIRGINIA
 LICENSED SURVEYOR
 LAND SURVEYOR 151
 CIVIL ENGINEER 107
 CIVIL ENGINEER 1929