

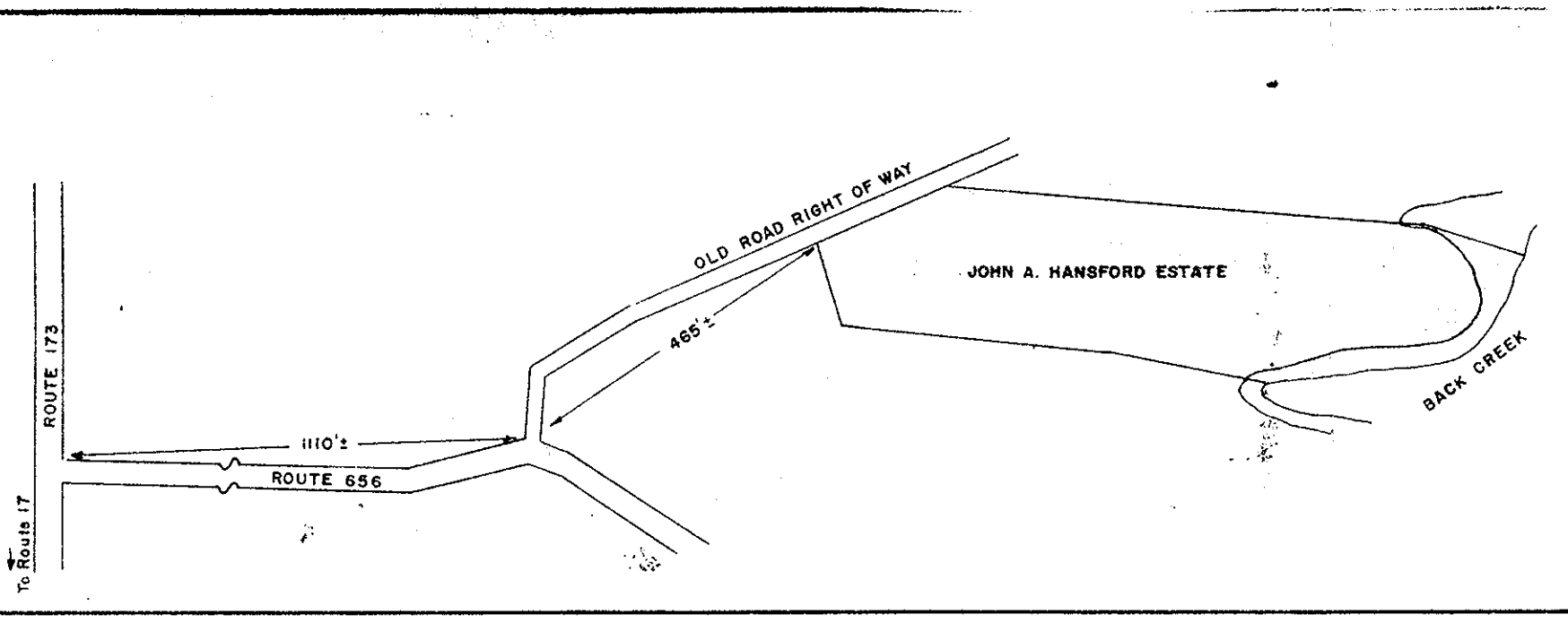
PLAT
SHOWING PROPERTY OF
JOHN A. HANSFORD ESTATE

BEING LOCATED ON BACK CREEK
GRAFTON MAGISTERIAL DISTRICT
YORK COUNTY, VIRGINIA

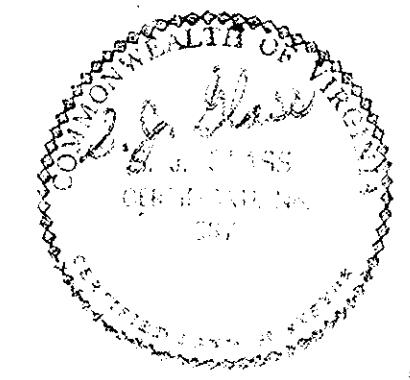
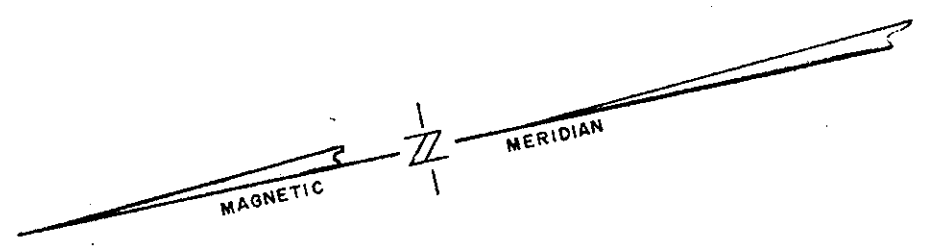
SCALE: 1" = 50'

JULY 31, 1963

S. J. GLASS & ASSOCIATES
ENGINEERING SERVICES--HAMPTON, VIRGINIA

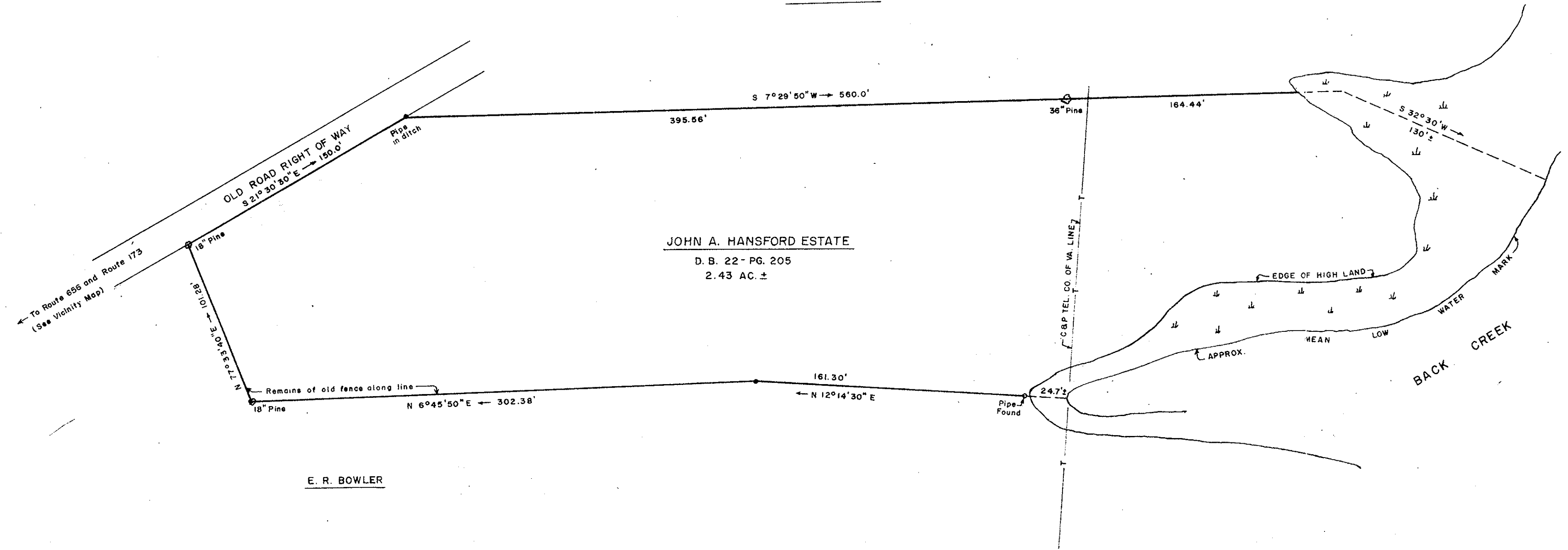


VICINITY MAP
SCALE: 1" = 200'



CONISH ESTATE

JOHN A. HANSFORD ESTATE
D. B. 22 - PG. 205
2.43 AC. ±



E. R. BOWLER

Filed in the Clerk's Office the 4th day of Oct, 1963

Teste
Merville J. Bryant, Clerk
Edith M. ... D. C.

Deed Recorded In
Deed Book 170 Page 1.