

Filed in the Clerk's Office the 6th day of Dec. 1963

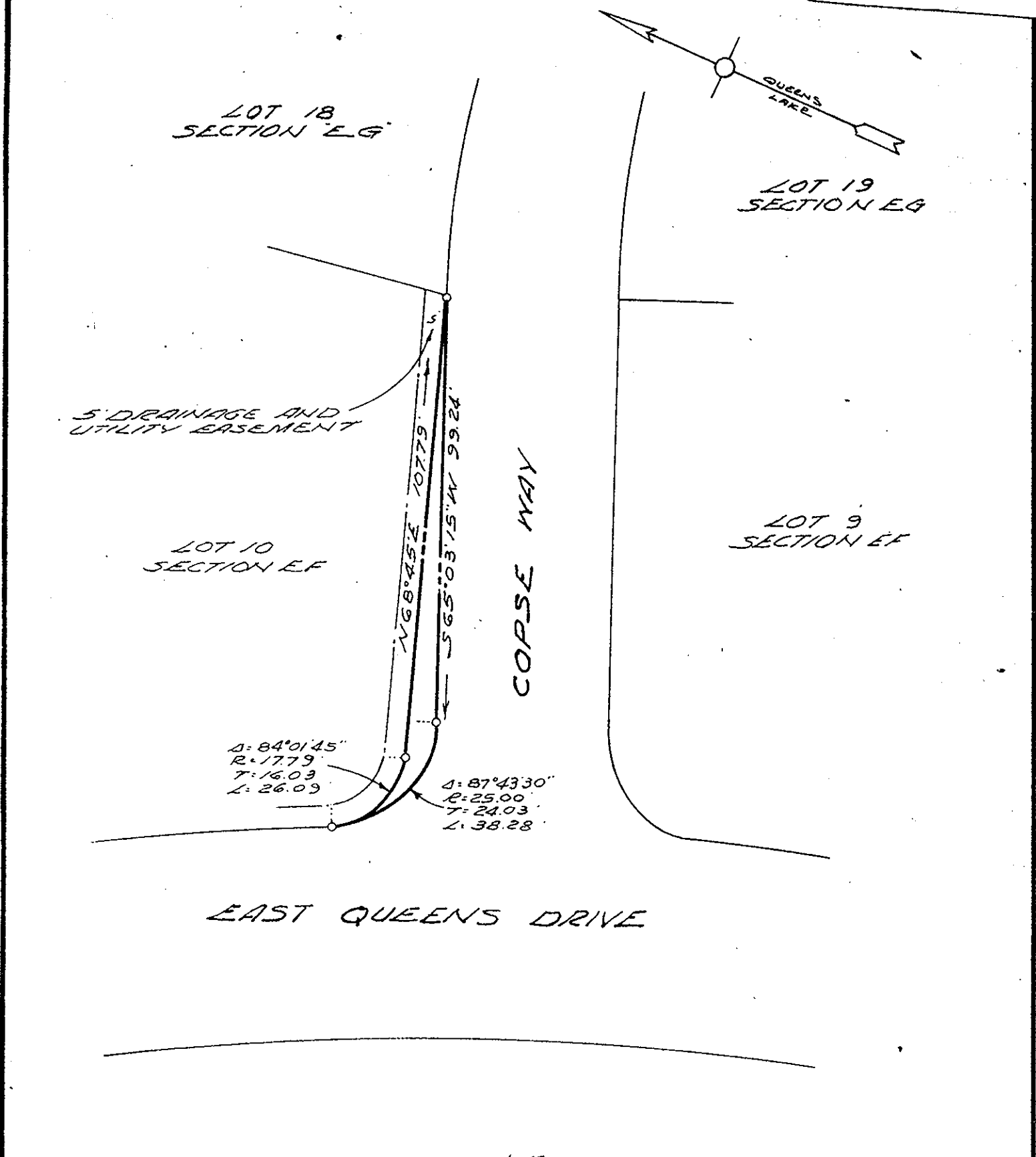
Teste: MELVILLE I. BRYANT, Clerk
Melville I. Bryant O.C. Clerk

Plat Book No. 7 Page 63

PLAT SHOWING ADDITIONAL DRAINAGE EASEMENTS ON LOTS NOS. 4 AND 5 SECTION EG QUEENS LAKE

BRUTON DISTRICT YORK COUNTY, VIRGINIA SCALE: 1"=20' APRIL 30, 1963

M. MANIUS, MARCK & M. MANIUS CIVIL ENGINEER, LAND SURVEYORS WILLIAMSBURG, VIRGINIA



Filed in the Clerk's Office the 6th day of Dec. 1963

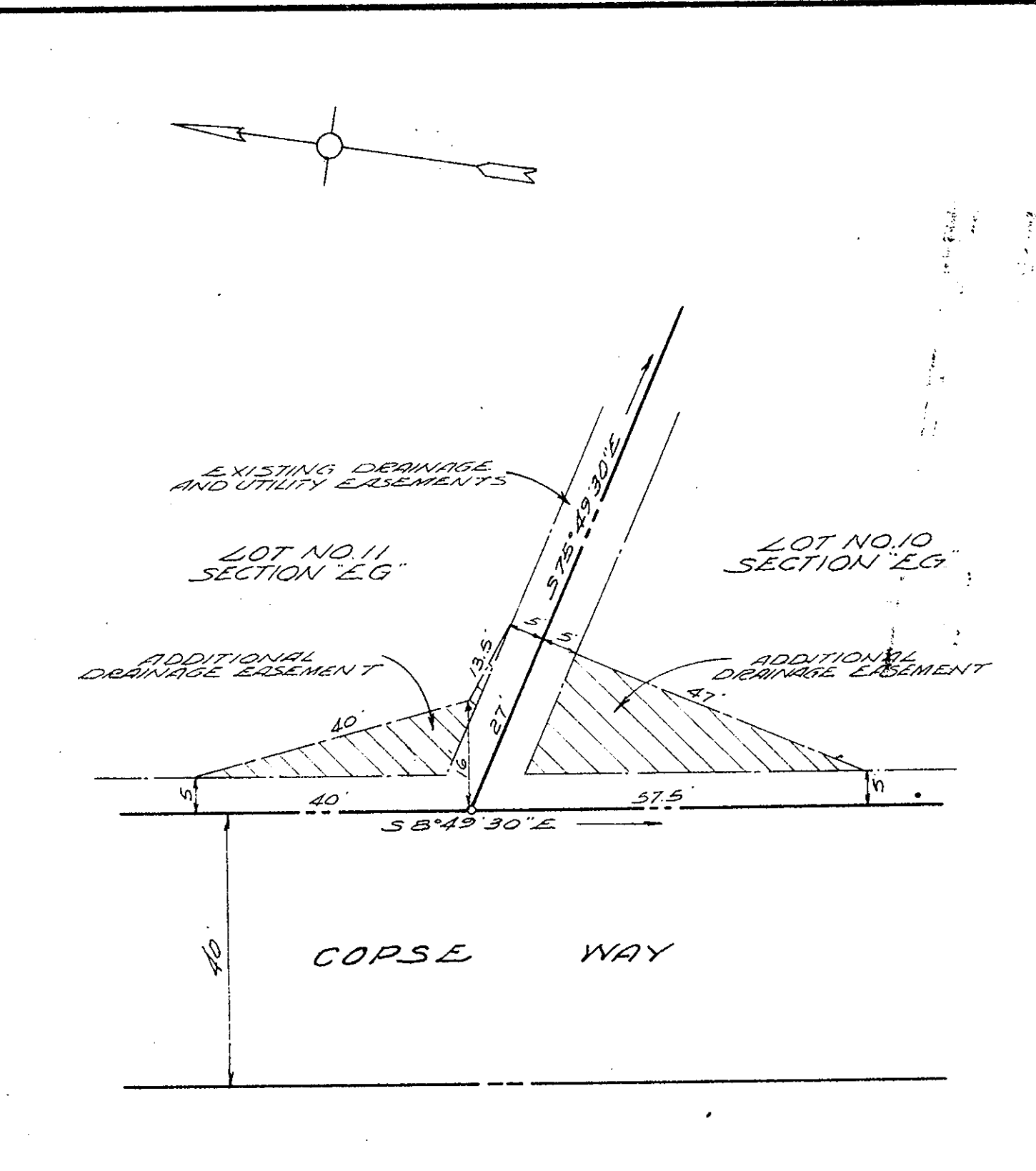
Teste: MELVILLE I. BRYANT, Clerk
Melville I. Bryant O.C. Clerk

Plat Book No. 7 Page 63

PLAT OF PART OF LOT 10, SECTION EF AT QUEENS LAKE DEDICATED FOR WIDENING OF COPSE WAY AT EAST QUEENS DRIVE

BRUTON DISTRICT YORK COUNTY, VIRGINIA SCALE: 1"=30' APRIL 30, 1963

M. MANIUS, MARCK & M. MANIUS CIVIL ENGINEER, LAND SURVEYORS WILLIAMSBURG, VIRGINIA



Filed in the Clerk's Office the 6th day of Dec. 1963

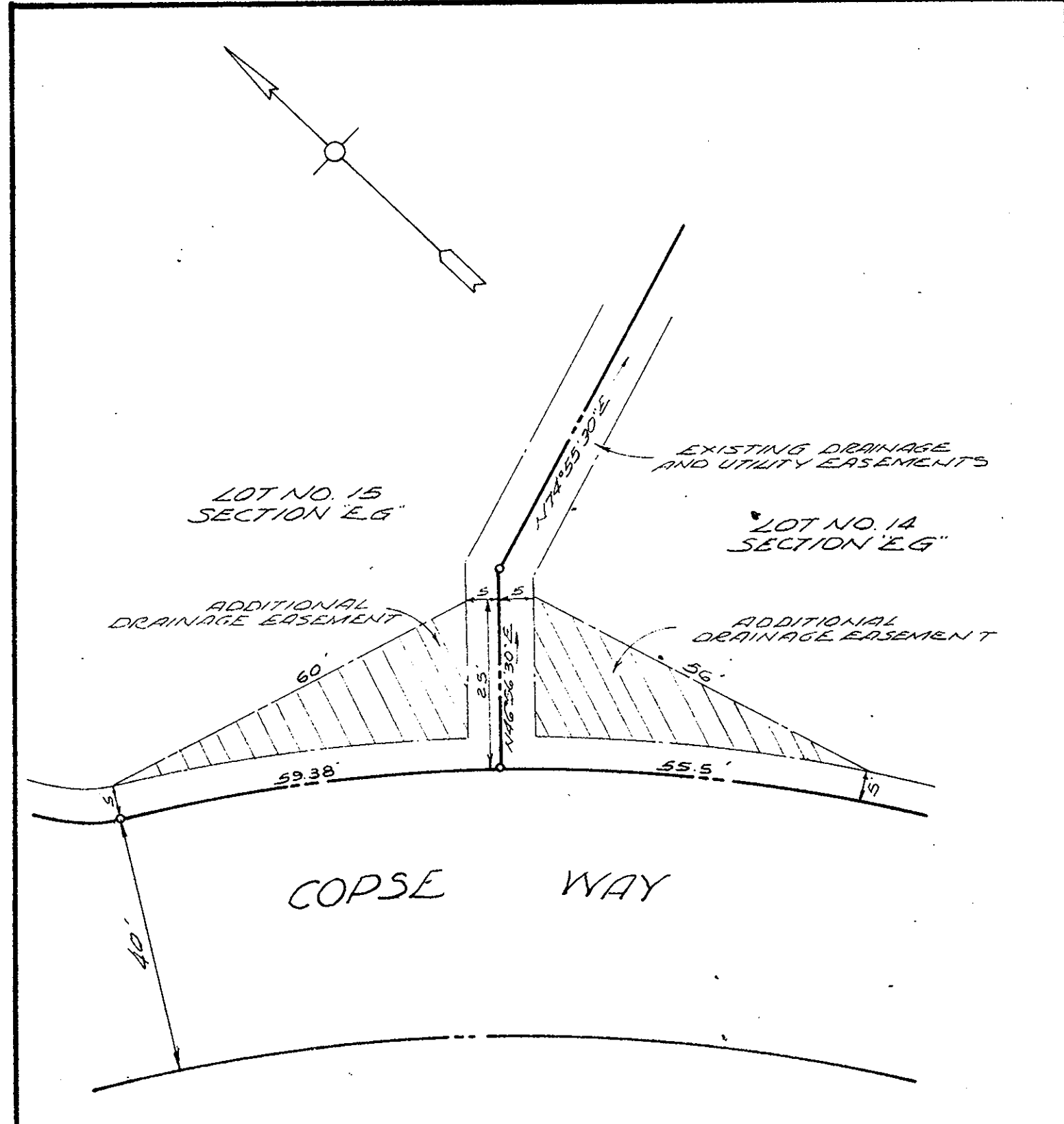
Teste: MELVILLE I. BRYANT, Clerk
Melville I. Bryant O.C. Clerk

Plat Book No. 7 Page 63

PLAT SHOWING ADDITIONAL DRAINAGE EASEMENTS ON LOTS NOS. 10 AND 11 SECTION EG QUEENS LAKE

BRUTON DISTRICT YORK COUNTY, VIRGINIA SCALE: 1"=20' APRIL 30, 1963

M. MANIUS, MARCK & M. MANIUS CIVIL ENGINEER, LAND SURVEYORS WILLIAMSBURG, VIRGINIA



Filed in the Clerk's Office the 6th day of Dec. 1963

Teste: MELVILLE I. BRYANT, Clerk
Melville I. Bryant O.C. Clerk

Plat Book No. 7 Page 63

PLAT SHOWING ADDITIONAL DRAINAGE EASEMENTS ON LOTS NOS. 14 AND 15 SECTION EG QUEENS LAKE

BRUTON DISTRICT YORK COUNTY, VIRGINIA SCALE: 1"=20' APRIL 30, 1963

M. MANIUS, MARCK & M. MANIUS CIVIL ENGINEER, LAND SURVEYORS WILLIAMSBURG, VIRGINIA