

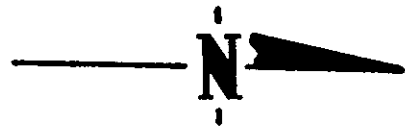
Filed in the Clerk's Office, Circuit Court, York Co., Va.
the 30th day of Dec 1974

Teste:

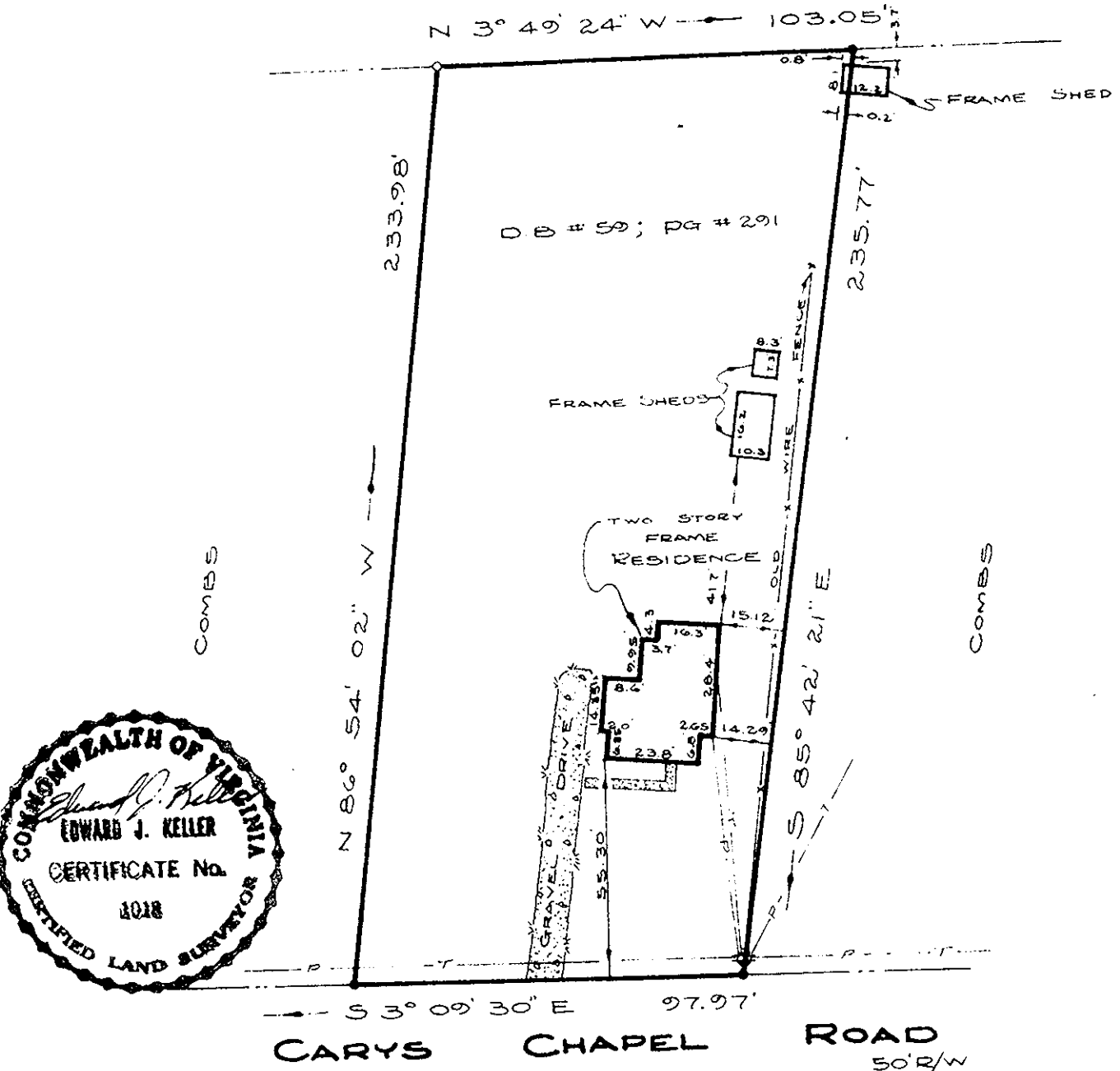
MELVILLE J. BRYANT, Clerk

Edith E. Bryant

D. C.



NOW OR FORMERLY
THE SONEY COMBS ESTATE.



- SYMBOLS DENOTE**
- PIPE FOUND
 - PIPE SET
 - ROD FOUND
 - CONC. MONUMENT
 - HUB

HEREBY CERTIFY THAT THE SURVEY REPRESENTED BY THIS PLAT WAS MADE BY ME ON THIS DATE AND IS CORRECT. THERE ARE NO ENCROACHMENTS UNLESS SHOWN HEREON.

E. J. KELLER
CERTIFIED LAND SURVEYOR
NEWPORT NEWS, VIRGINIA

JOB LOCATION # CARYS CHAPEL ROAD

PLAT OF THE PROPERTY OF:

BLANCHE SLADE

PARCEL OF LAND

CONTAINING
0.54 ACRE

YORK COUNTY, VA.

CODE: 74-749

TO:

SCALE: 1" = 40'

DATE: OCT. 14, 1974