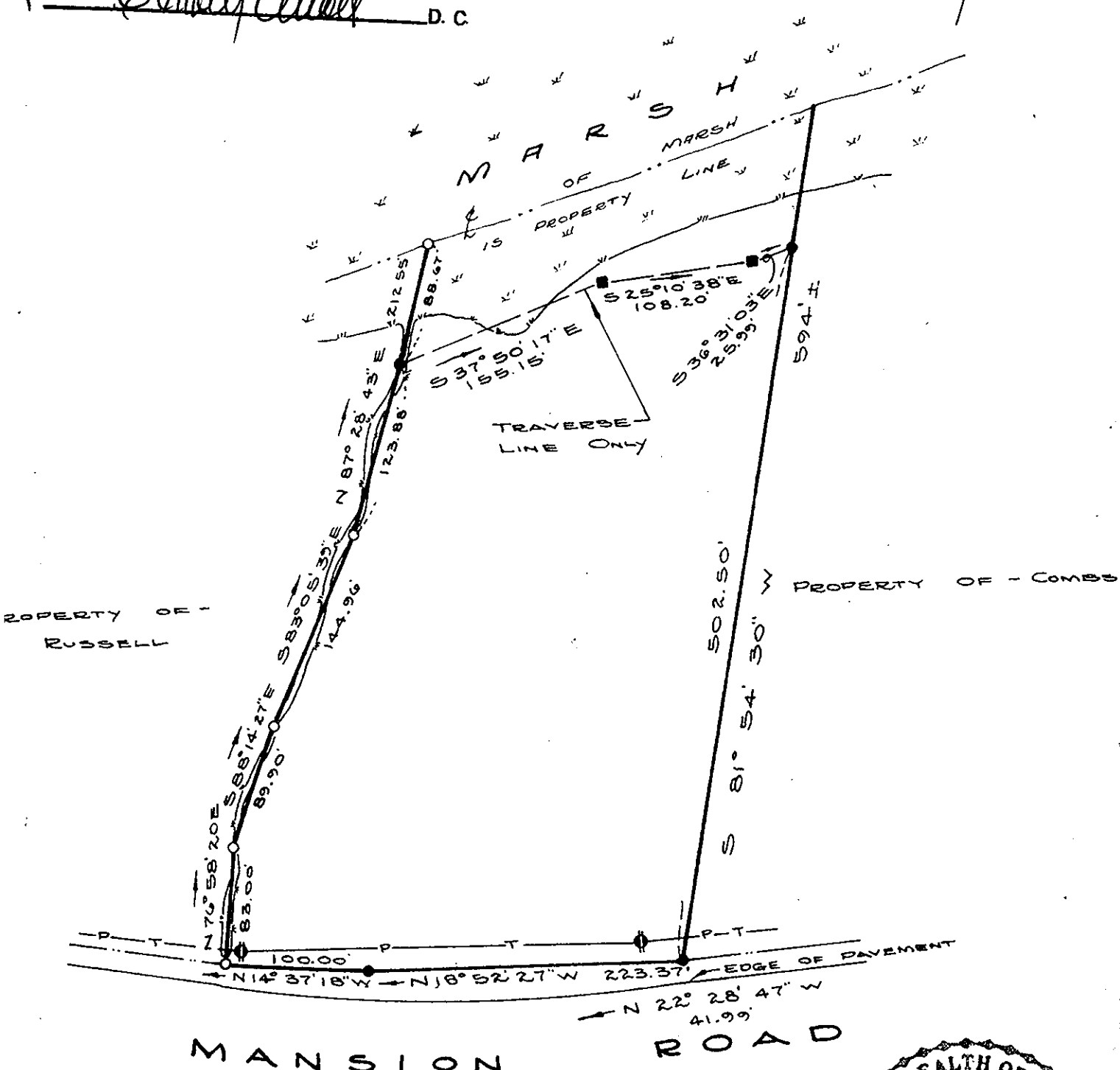


Filed in the Clerk's Office, Circuit Court, York Co., Va.
 on 30th day of Dec 1974

Teste:

MARVILLE J. BRYANT, Clerk

Edward J. Keller D.C.



SYMBOLS DENOTE

- PIPE FOUND
- PIPE SET
- ROD FOUND
- CONC. MONUMENT
- HUB



JOB LOCATION #

PLAT OF THE PROPERTY OF:

HARRY SLADE

PARCEL OF LAND CONTAINING

3.38 ± ACRES - HIGHLAND
 0.37 ± ACRE - LOWLAND
 3.75 ± ACRES - TOTAL

YORK COUNTY, VIRGINIA

Edward J. Keller
 I HEREBY CERTIFY THAT THE SURVEY REPRESENTED BY THIS PLAT WAS MADE BY ME ON THIS DATE AND IS CORRECT. THERE ARE NO ENCROACHMENTS UNLESS SHOWN HEREON.

J. KELLER
 CERTIFIED LAND SURVEYOR
 WYOMINGPORT NEWS, VIRGINIA

DE: 73-1108-A

TO: SLADE

SCALE: 1" = 100'

DATE: 4 JAN 74