

MAGNETIC MERIDIAN

LEIGHTON E. CAUSEY, JR.  
D.B. 261 - PG. 58  
S 24° 13' 30" W → 448.17'

RUBEN T. COOK  
D.B. 197 - PG. 560  
N 76° 36' 26" E → 170.50'

**GORDON EUGENE MOORE**  
D.B. 108 - PG. 176  
D.B. 121 - PG. 300  
D.B. 186 - PG. 345  
D.B. 212 - PG. 118  
7.824 AC. ±

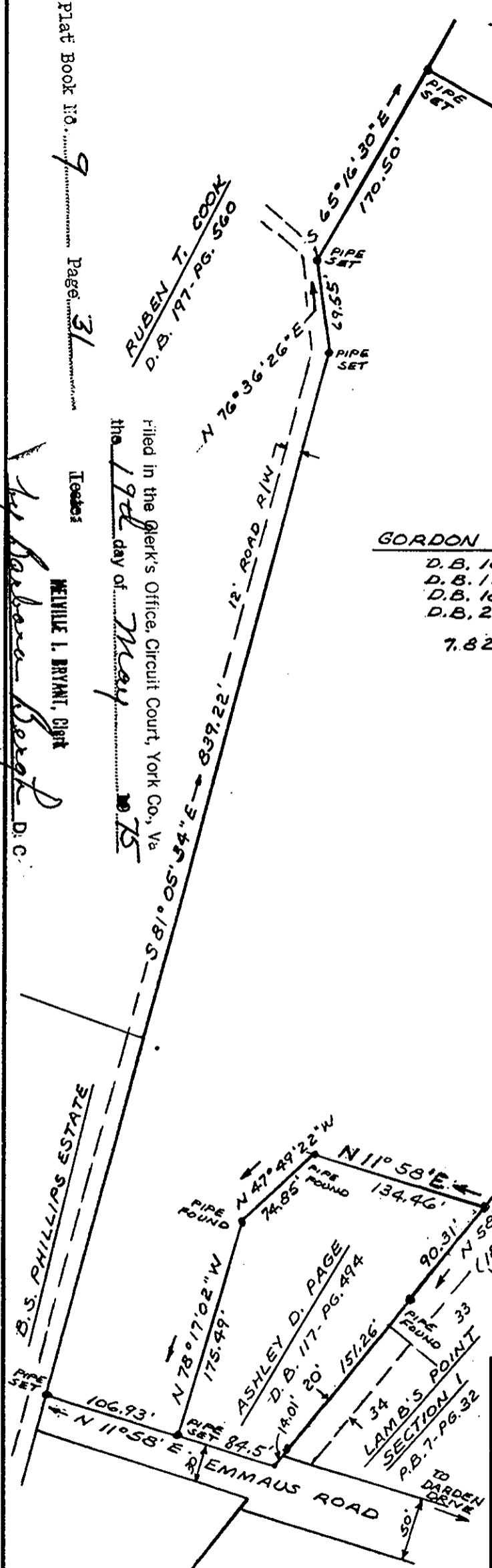
PENINSULA MOTOR COURTS, INCORPORATED  
D.B. 167 - PG. 49  
N 75° 46' 30" W → 311.95'

Filed in the Clerk's Office, Circuit Court, York Co., Va  
the 19th day of May 1975

MEVILLE I. BRYANT, Clerk

By Barbara Beagle D.C.

Plat Book No. 9 Page 31



**PLAT**  
SHOWING PROPERTY OF  
**GORDON EUGENE MOORE**

BEING LOCATED ON EMMAUS ROAD  
TOWN OF POQUOSON  
YORK COUNTY, VIRGINIA

SCALE: 1" = 100'      APRIL 30, 1975

S. J. GLASS & ASSOCIATES  
ENGINEERING SERVICES -- HAMPTON, VIRGINIA

P. F. NO. A-M-257      FIELD WORK BY: L.B.JR.; S.K.

PLAT REFERENCES:  
D.B. 121 - PG. 302  
P.B. 7 - PG. 12