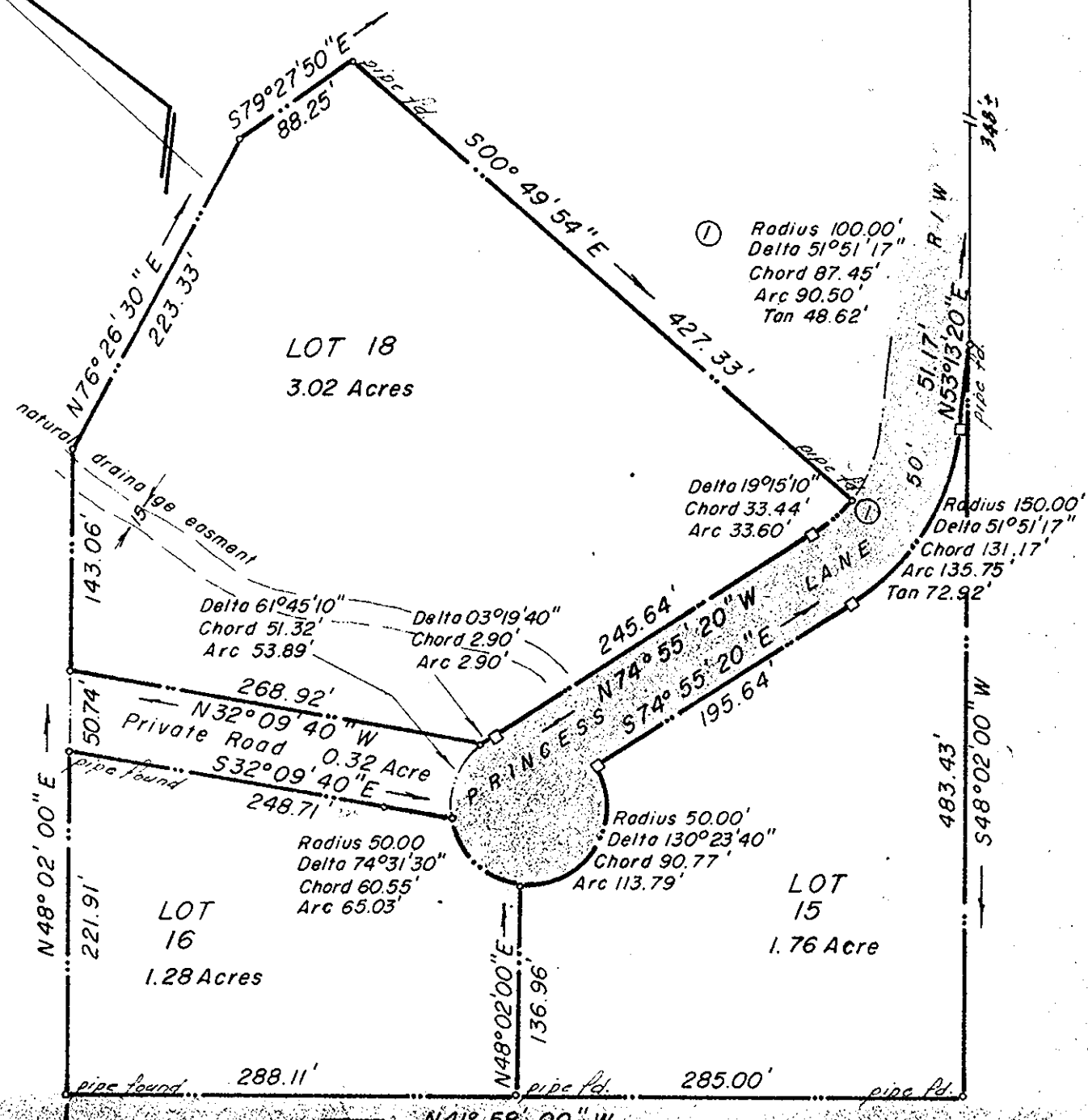


State Rte. 602



Filed in the Clerk's Office, Circuit Court, York Co., Va.
 the 24th day of July 1975

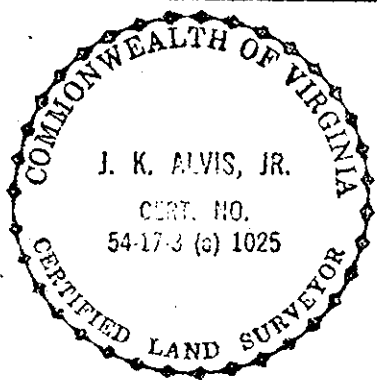
Teste:
MELVILLE I. BRYANT, Clerk
Catherine Bender D.C.

CORRECTION PLAT 10

OLD QUAKER ESTATES

SECTION 2-A

LOTS 15, 16, & 18 — PRINCESS LANE
 BRUTON MAG. DISTRICT — York County, Va.



James K. Alvis, Jr.

William P. Larew
 W. P. LAREW, Executive Secretary

E. E. PAINE, INC.
 Engineering & Surveying
 Newport News, Virginia
 Scale: 1" = 100' Date: 18 April 1972 Job No: 5037

Page **40**
 Plat Book No. **9**