

BRANDYWINE

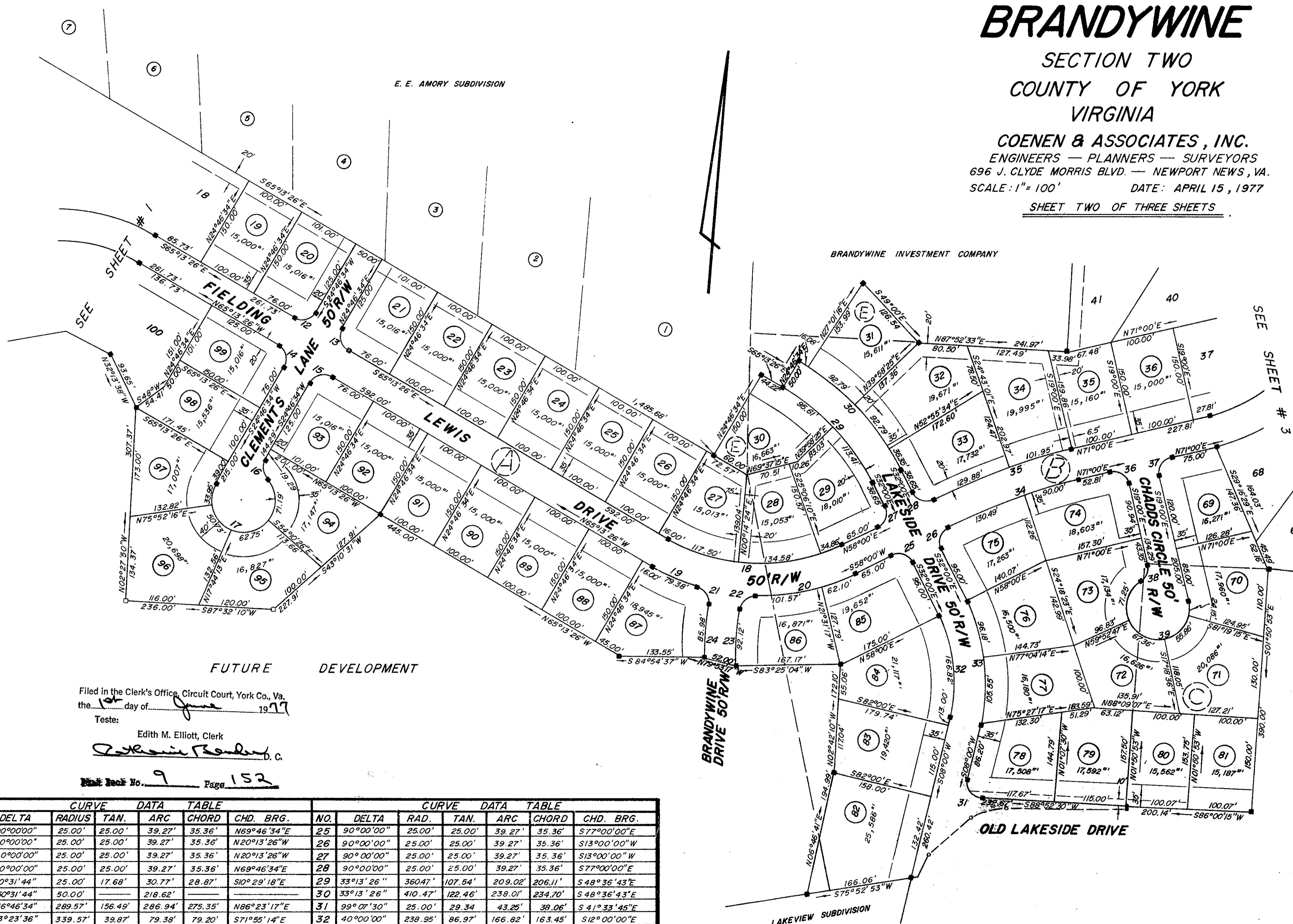
SECTION TWO
COUNTY OF YORK
VIRGINIA

COENEN & ASSOCIATES, INC.
ENGINEERS — PLANNERS — SURVEYORS
696 J. CLYDE MORRIS BLVD. — NEWPORT NEWS, VA.
SCALE: 1" = 100' DATE: APRIL 15, 1977

SHEET TWO OF THREE SHEETS

E. E. AMORY SUBDIVISION

BRANDYWINE INVESTMENT COMPANY



FUTURE DEVELOPMENT

Filed in the Clerk's Office, Circuit Court, York Co., Va.
the 10th day of June 1977

Teste:

Edith M. Elliott, Clerk

Katharine B. Borden, D. C.

Plan Book No. 9 Page 152

CURVE DATA TABLE						CURVE DATA TABLE					
NO.	DELTA	RADIUS	TAN.	ARC	CHD.	NO.	DELTA	RAD.	TAN.	ARC	CHD.
12	90°00'00"	25.00'	25.00'	39.27'	35.36'	25	90°00'00"	25.00'	25.00'	39.27'	35.36'
13	90°00'00"	25.00'	25.00'	39.27'	35.36'	26	90°00'00"	25.00'	25.00'	39.27'	35.36'
14	90°00'00"	25.00'	25.00'	39.27'	35.36'	27	90°00'00"	25.00'	25.00'	39.27'	35.36'
15	90°00'00"	25.00'	25.00'	39.27'	35.36'	28	90°00'00"	25.00'	25.00'	39.27'	35.36'
16	70°31'44"	25.00'	17.68'	30.77'	28.87'	29	33°13'26"	360.47'	107.54'	209.02'	206.11'
17	250°31'44"	50.00'		218.62'		30	33°13'26"	410.47'	122.46'	238.01'	234.70'
18	56°46'34"	289.57'	156.49'	286.94'	275.35'	31	99°07'30"	25.00'	29.34'	43.25'	38.06'
19	13°23'36"	339.57'	39.87'	79.38'	79.20'	32	40°00'00"	238.95'	86.97'	166.82'	163.45'
20	27°37'02"	339.57'	83.46'	163.67'	162.10'	33	40°00'00"	288.95'	105.17'	201.73'	197.65'
21	82°07'02"	25.00'	21.78'	35.83'	32.84'	34	13°00'00"	971.79'	110.72'	220.49'	220.02'
22	82°07'02"	25.00'	21.78'	35.83'	32.84'	35	13°00'00"	1021.79'	116.42'	231.83'	231.83'
23	10°04'56"	523.48'	46.18'	92.12'	92.00'	36	90°00'00"	25.00'	25.00'	39.27'	35.36'
24	08°35'23"	573.48'	43.07'	85.98'	85.90'	37	90°00'00"	25.00'	25.00'	39.27'	35.36'

CURVE DATA TABLE						
NO.	DELTA	RAD.	TAN.	ARC	CHD.	CHD. BRG.
38	70°31'44"	25.00'	17.68'	30.77'	28.87'	S 16° 15' 52" W
39	250°31'44"	50.00'		218.62'		

B. L. T.