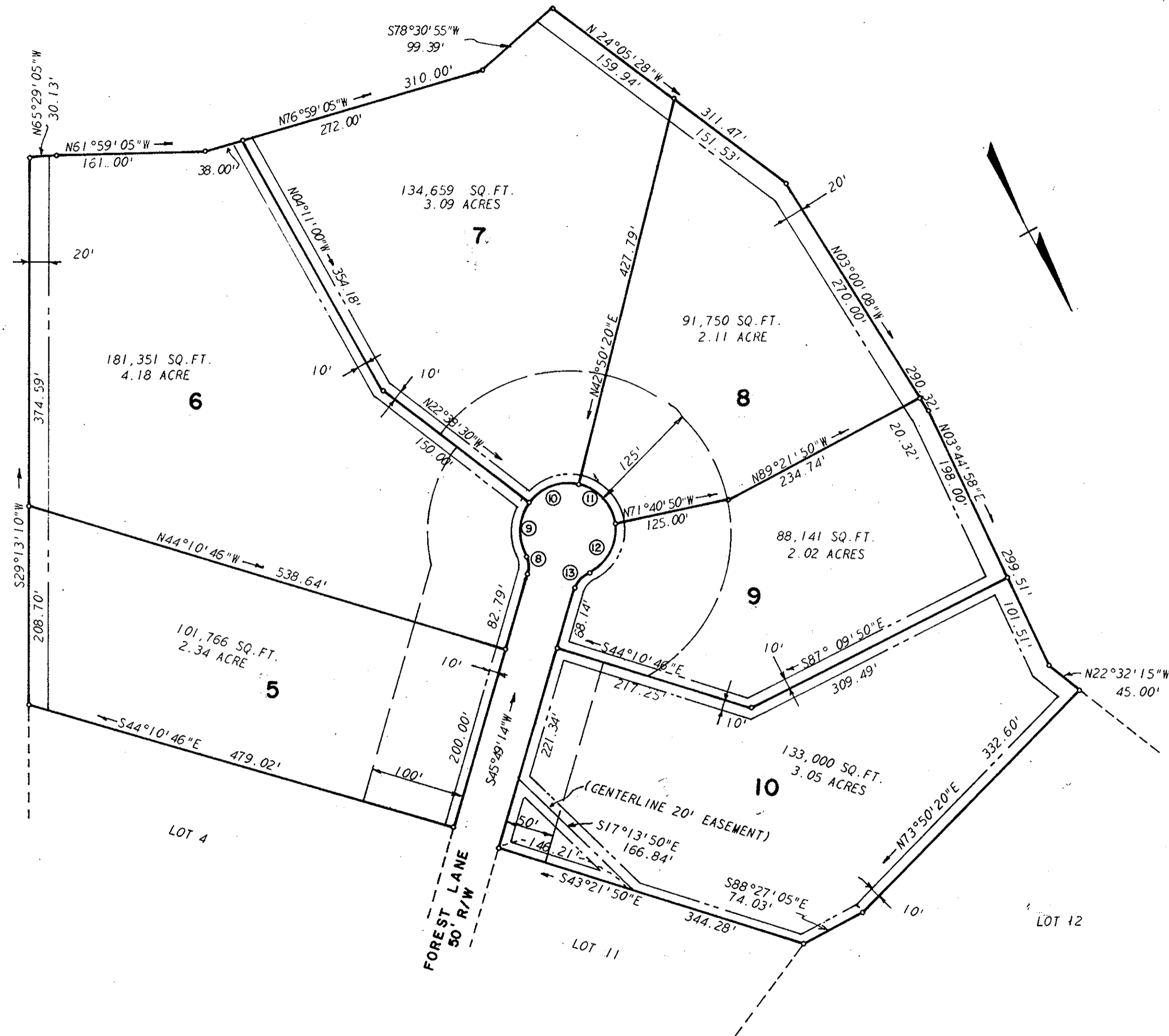


CLEAN UP THE WORK'S COPY



\_\_\_\_\_ DENOTES LOT LINE  
 \_\_\_\_\_ DENOTES SETBACK LINE  
 \_\_\_\_\_ DENOTES DRAINAGE AND UTILITY EASEMENT

CURVE DATA						
NO	DELTA	RADIUS	LENGTH	TANGENT	CHORD	CHORD BEARING
8	48°11'21"	25.00'	21.03'	11.18'	20.41'	N21°43'34"E
9	69°43'40"	50.00'	60.85'	34.83'	57.16'	N32°29'43"E
10	65°28'55"	50.00'	57.14'	32.15'	54.08'	S79°54'50"E
11	65°28'55"	50.00'	57.14'	32.15'	54.08'	S14°25'05"E
12	75°41'25"	50.00'	66.05'	38.85'	61.35'	S56°10'05"W
13	48°11'21"	25.00'	21.03'	11.18'	20.41'	S69°55'07"W

Filed in the Clerk's Office, Circuit Court, York Co., VA  
 on 11<sup>th</sup> day of December 1978  
 Edith M. Elliott, Clerk  
*Nancy B. Lane*

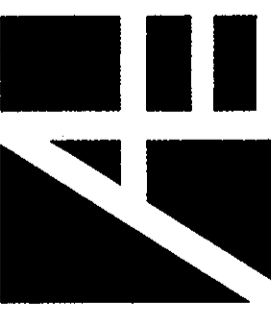
Plat Book No. 9 Page 273

**APPROVED**  
 YORK COUNTY BOARD OF SUPERVISORS  
 BY *R. C. [Signature]*  
 PLAT APPROVING AGENT  
 DATE Dec 11, 1978

revisions					

**SCIMMINO FARMS**  
**SECTION 10**  
 J. L. LEVINSON, OWNER  
 BRUTON DISTRICT, YORK COUNTY, VIRGINIA

architects and engineers, inc.  
 architects engineers surveyors and planners  
 Williamsburg, Virginia



proj.	2700
date	4/26/78
scale	1" = 100'
dwg. no.	2 of 2