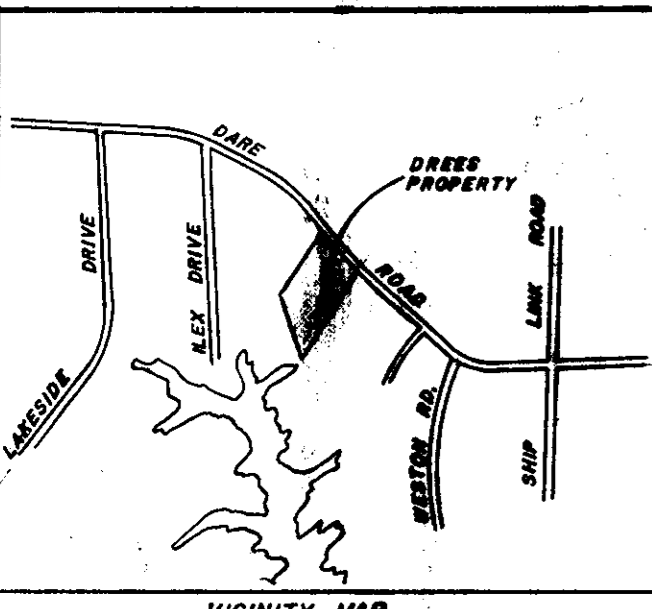


SUBDIVISION OF THE PROPERTY OF
FRANK H. & IDA SUE DREES
COUNTY OF YORK, VIRGINIA

SCALE: 1"=100' OCTOBER 14, 1980

S. J. GLASS AND ASSOCIATES
ENGINEERING SERVICES -- YORK COUNTY, VIRGINIA



THIS SUBDIVISION IS WITH THE FREE CONSENT AND IN ACCORDANCE WITH THE DESIRES OF THE UNDERSIGNED OWNERS AND PROPRIETERS.

Frank H. Drees
FRANK H. DREES
Ida Sue Drees
IDA SUE DREES

DATE December 15, 1980

Edith W. Hogge, A NOTARY PUBLIC IN AND FOR THE COUNTY OF York, VIRGINIA DO HEREBY CERTIFY THAT THE ABOVE NAMED PERSONS WHOSE NAMES ARE SIGNED TO THE FOREGOING WRITING HAVE ACKNOWLEDGED THE SAME BEFORE ME IN MY COUNTY AND STATE AFORESAID.

GIVEN UNDER MY HAND THIS 15 DAY OF December 15, 1980

Edith W. Hogge
NOTARY PUBLIC
MY COMMISSION EXPIRES ON THE 15 DAY OF July, 1982

TO THE BEST OF MY KNOWLEDGE AND BELIEF ALL THE REQUIREMENTS AS SET FORTH IN THE ORDINANCE FOR APPROVING PLATS OF SUBDIVISIONS IN THE COUNTY OF YORK, VIRGINIA, HAVE BEEN COMPLIED WITH, INCLUDING A CLOSURE OF NOT LESS THAN 1/10,000.

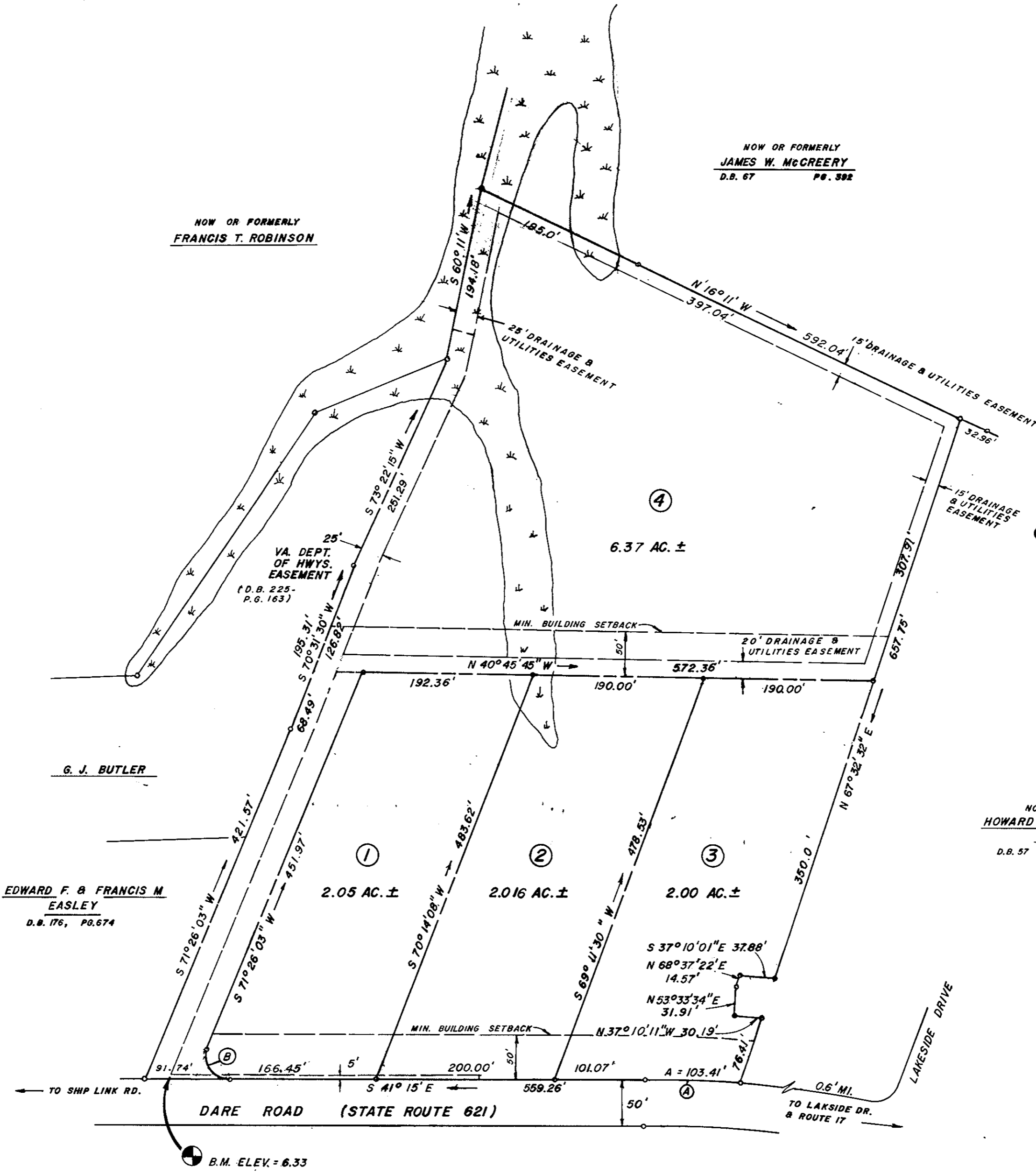
THIS IS TO CERTIFY THAT THE LAND EMBRACED IN THIS SUBDIVISION IS IN THE NAME OF FRANK H. & IDA SUE DREES AND WAS ACQUIRED FROM ANN REECE JOHNSON BY DEED DATED OCTOBER 27, 1980, AND DULY RECORDED IN THE CLERK'S OFFICE OF THE CIRCUIT COURT OF THE COUNTY OF YORK, VIRGINIA, IN DEED BOOK 346 PAGE 797 I CERTIFY THAT MONUMENTS AS SHOWN ON THE PLAT WILL BE SET ON OR BEFORE DECEMBER 1, 1980.



S. Johnston Glass
S. JOHNSTON GLASS, P.E. AND C.L.S.

UTILITIES NOTES:
WATER: EACH LOT WITHIN THIS SUBDIVISION IS TO BE SERVED BY A WELL TO BE APPROVED BY THE HEALTH DEPARTMENT.
SEWER: THIS SUBDIVISION HAS BEEN INSPECTED BY AN AGENT OF THE DIVISION OF HEALTH SERVICES AND EACH LOT CONTAINED THEREIN HAS BEEN DETERMINED ACCEPTABLE FOR INSTALLATION OF AN INDIVIDUAL SEWERAGE DISPOSAL SYSTEM UNDER THE SUBDIVISION EVALUATION IN EFFECT AS OF THIS DATE

- 1. As Permitted DAR 9/19/80
- 2. As Permitted DAR 9/19/80



EDWARD F. & FRANCIS M. EASLEY
D.B. 176, PG. 674

G. J. BUTLER

NOW OR FORMERLY
FRANCIS T. ROBINSON

NOW OR FORMERLY
JAMES W. MCCREERY
D.B. 67 PG. 592

NOW OR FORMERLY
HOWARD ALONZO WARNICK
ET UX
D.B. 57 PG. 282

CURVE DATA:

	(A)	(B)
DELTA	2°03'01"	112°41'03"
RADIUS	2889.79'	25.0'
TANGENT	51.70'	37.55'
ARC	103.41'	49.17'
CHORD	103.40'	41.61'
CHD. BG.	S 40°13'30"E	S 15°05'31"W

TOTAL SUBDIVIDED AREA 12.436 AC. ±

EASEMENTS SHOWN THUS ARE HEREBY CONVEYED TO THE COUNTY OF YORK FOR DRAINAGE AND UTILITIES.

MINIMUM BUILDING SETBACK LINE SHOWN THUS

B.M. - CHISELSQUARE IN TOP OF S.W. END OF 18" R.C.P., TRANSFERRED FROM B.M. ADR-43 AT SHIPLINK ROAD & DARE ROAD.

APPROVED:
YORK COUNTY BOARD OF SUPERVISORS
BY [Signature] PLAT APPROVING AGENT
DATE: January 19, 1981

STATE OF VIRGINIA
COUNTY OF YORK
IN THE CLERK'S OFFICE OF THE CIRCUIT COURT FOR THE COUNTY OF YORK THE 20th DAY OF January, 1981
THIS MAP WAS PRESENTED AND ADMITTED TO RECORD AS THE LAW DIRECTS
PLAT BOOK 9 PAGE 404
TESTE: [Signature] CLERK
BY: [Signature]