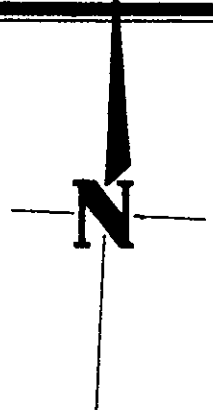
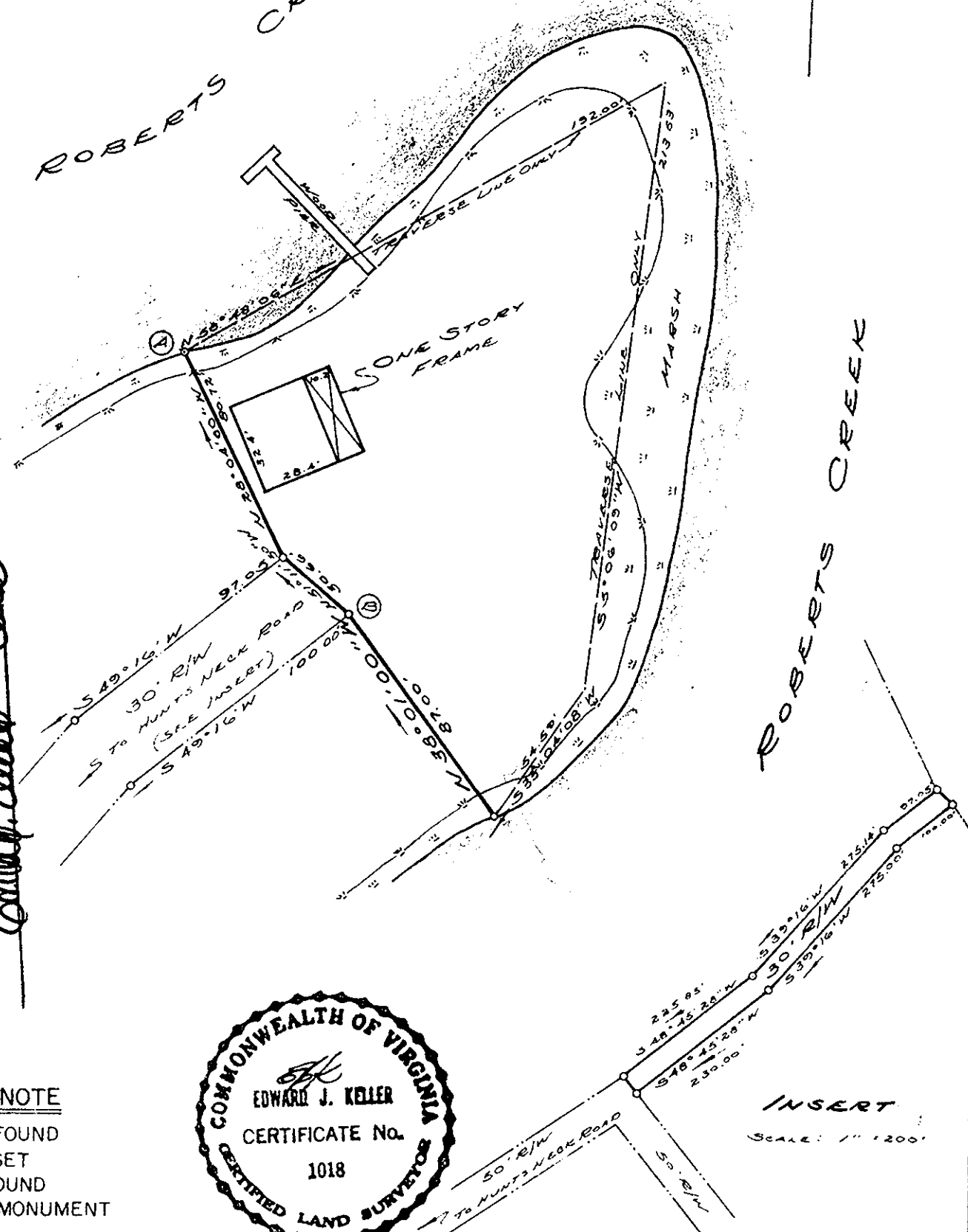


NOTE: LINE FROM (A) TO (B) IS HEREBY AGREED UPON BY
JARMON M. MOORE
ROBERT T. MOORE



ROBERTS CREEK



Filed in the Clerk's Office, Circuit Court, York Co., Va.
the 2nd day of March 19 21

Teste:
Edith M. Elliott, Clerk
Edith M. Elliott

- SYMBOLS DENOTE
- PIPE FOUND
 - PIPE SET
 - ROD FOUND
 - CONC. MONUMENT



INSERT
SCALE: 1" = 200'

I, *Edward J. Keller*
HEREBY CERTIFY THAT THE SURVEY REPRESENTED BY THIS PLAT WAS MADE BY ME ON THIS DATE AND IS CORRECT. THERE ARE NO ENCROACHMENTS UNLESS SHOWN HEREON.
E. J. KELLER
LAND SURVEYOR
NEWPORT NEWS, VIRGINIA

JOB LOCATION #
PLAT OF THE PROPERTY OF:
JARMON M. MOORE
PARCEL of LAND
CONTAINING **0.7± ACRE**
BRING **LOT 2**
AS SHOWN IN DEED BOOK 172 PAGE 312
CITY of ROANOKE, VA.