

# DRAINAGE EASEMENT EXTENSIONS ROYAL GRANT SUBDIVISION

SECTION ONE  
COUNTY OF YORK, VIRGINIA

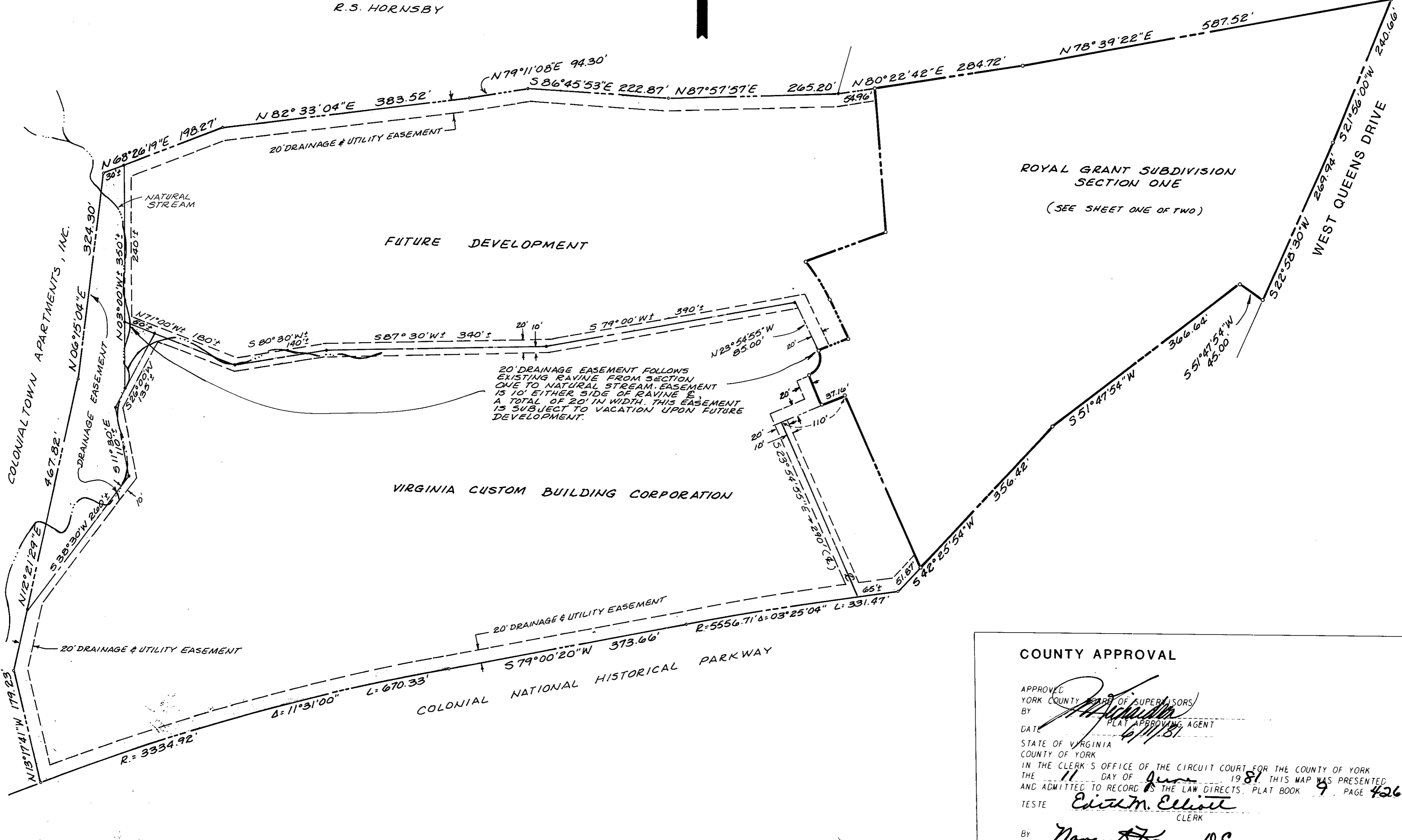
JANUARY 8, 1981 SCALE 1"=100'  
SHEET TWO OF TWO

AES, A PROFESSIONAL CORPORATION  
Architecture, Engineering, Surveying  
625 Ironbound Rd. (804) 253-0040  
WILLIAMSBURG, VIRGINIA 23185



QUEENS LAKE INTERMEDIATE SCHOOL

R.S. HORNSBY



ROYAL GRANT SUBDIVISION  
SECTION ONE  
(SEE SHEET ONE OF TWO)

### COUNTY APPROVAL

APPROVED  
YORK COUNTY BOARD OF SUPERVISORS  
BY *[Signature]*  
PLAT APPROVING AGENT

DATE 6/11/81  
STATE OF VIRGINIA  
COUNTY OF YORK  
IN THE CLERK'S OFFICE OF THE CIRCUIT COURT FOR THE COUNTY OF YORK  
THE 11 DAY OF June 19 81 THIS MAP WAS PRESENTED  
AND ADMITTED TO RECORD AS THE LAW DIRECTS, PLAT BOOK 9 PAGE 426

TESTE *[Signature]*  
CLERK

BY *[Signature]*, D.C.