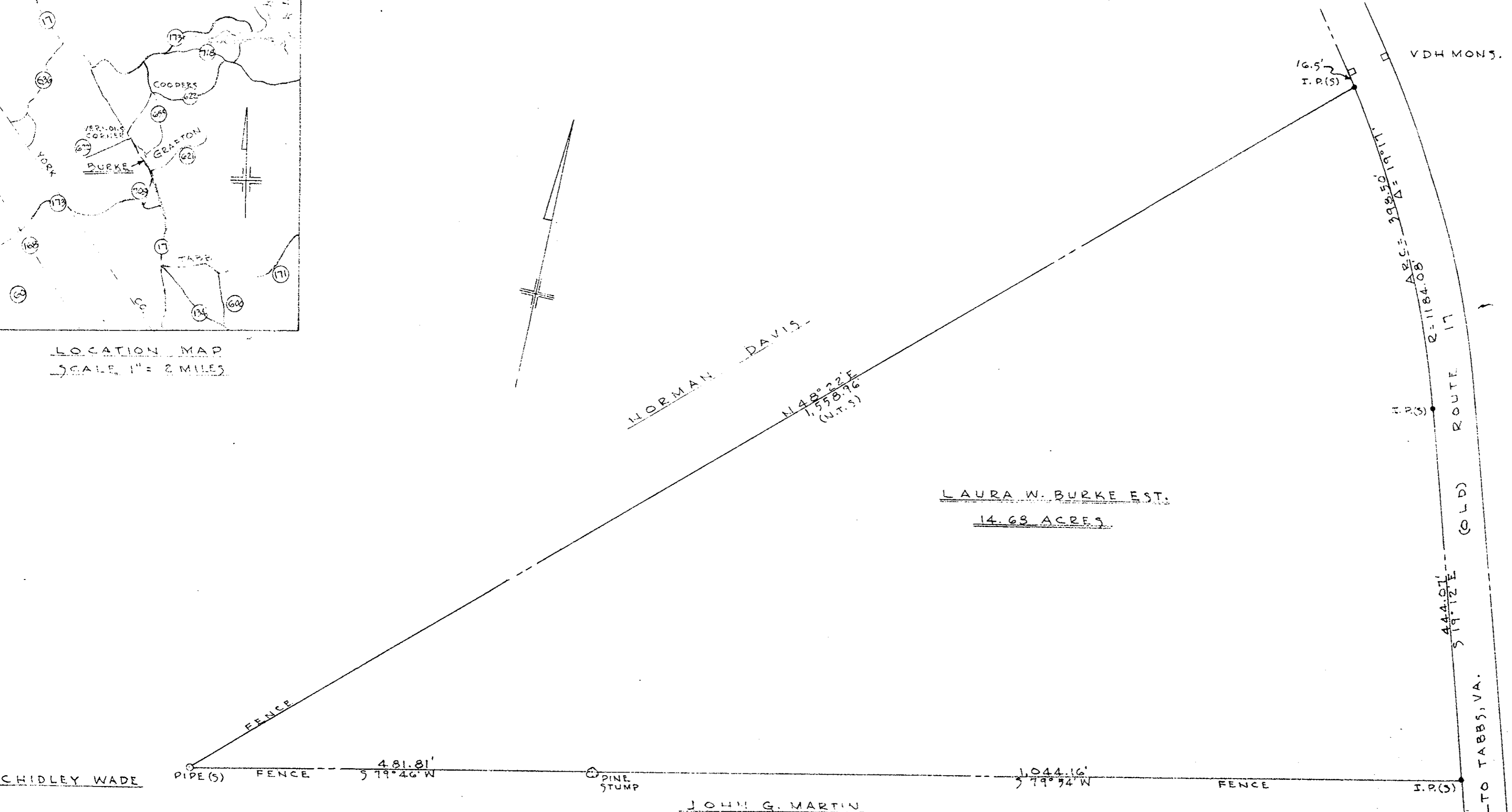


LOCATION MAP
SCALE 1" = 2 MILES



LAURA W. BURKE EST.
14.68 ACRES

NORMAN DAVIS

JOHN G. MARTIN

CHIDLEY WADE

GENERAL NOTES

1. THIS PROPERTY WAS ESTABLISHED FROM CORNERS SHOW TO THIS SURVEYOR BY WM. BURKE AND M.E. BURCHER AND PHYSICAL EVIDENCE FOUND IN THE FIELD. FOR A DESCRIPTION OF THE ABOVE PROPERTY SEE DEED BOOK 57, PAGE 496, IN THE CLERKS OFFICE OF YORK CO., VA.
2. BEARINGS ARE MAGNETIC NORTH BASED ON BEARING ALONG HIGHWAY.

PLAT SHOWING PROPERTY
OF
LAURA W. BURKE ESTATE
GRAFTON MAG. DISTRICT,
YORK COUNTY, VIRGINIA.
SCALE 1" = 100' APRIL, 1961

GARDNER L. PERRY
NORFOLK, VIRGINIA.



Book 9 Page 515

Filed in the Clerk's Office, Circuit Court York Co. Va
the 23rd day of Sept. 1961

Teste:
Edith M. Elliott, Clerk
Edith M. Elliott
D. C.