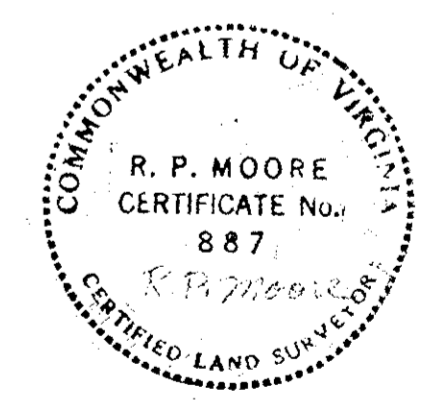




Filed in the Clerk's Office, Circuit Court, York Co., Va.
the 26th day of April 1953
Teste:
Edith M. Elliott, Clerk
Barbara Bergh D.C.

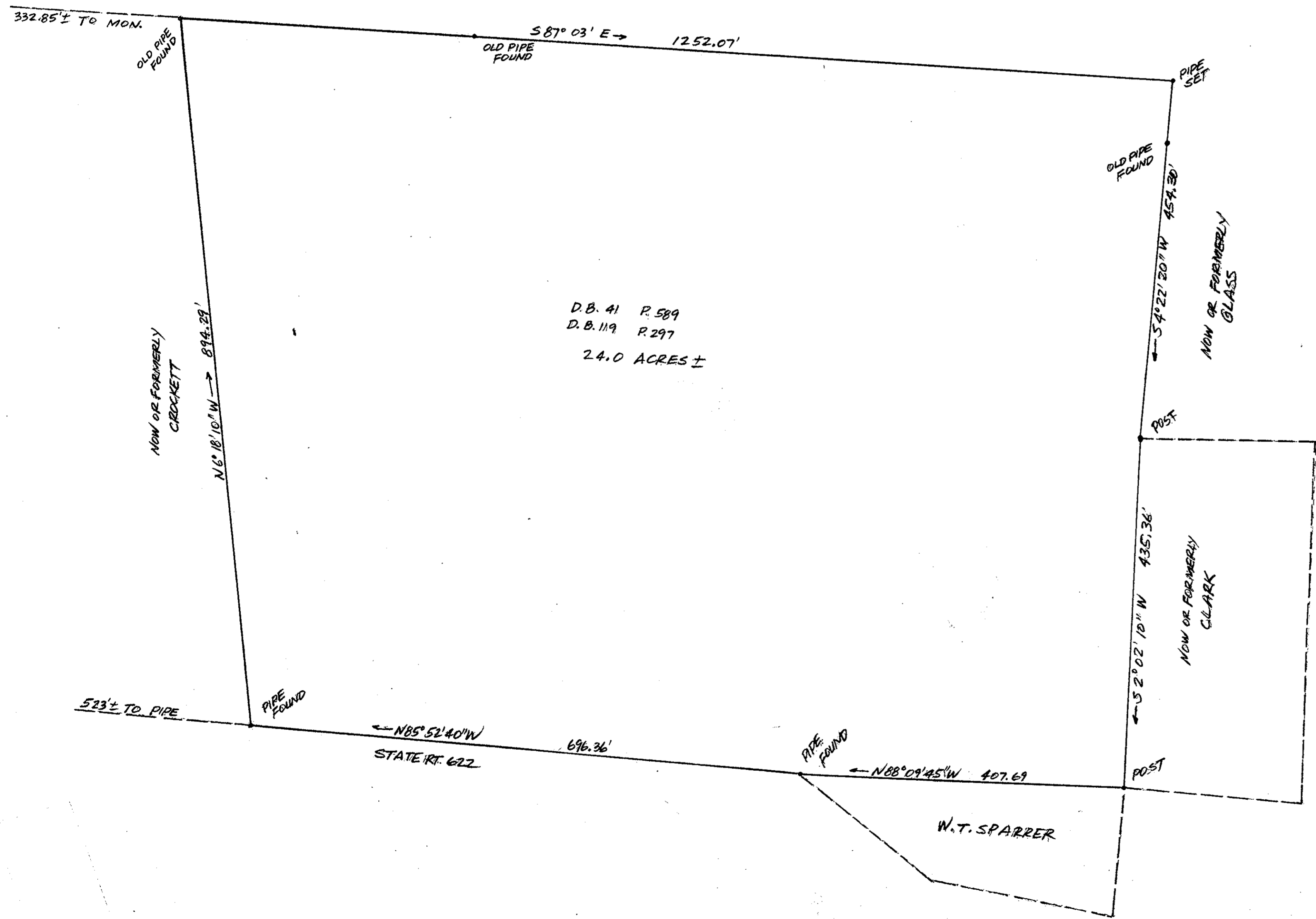
Plat Book No. 9 Page 553



PLAT
SHOWING PROPERTY OF
W.W. SPARRER ESTATE

LOCATED ON STATE RT. 622
SEAFORD, VIRGINIA
SCALE: 1"=100'

R. P. MOORE
CERTIFIED LAND SURVEYOR
SEPT. 10, 1964



D.B. 41 P. 589
D.B. 119 P. 297
24.0 ACRES ±

W.T. SPARRER