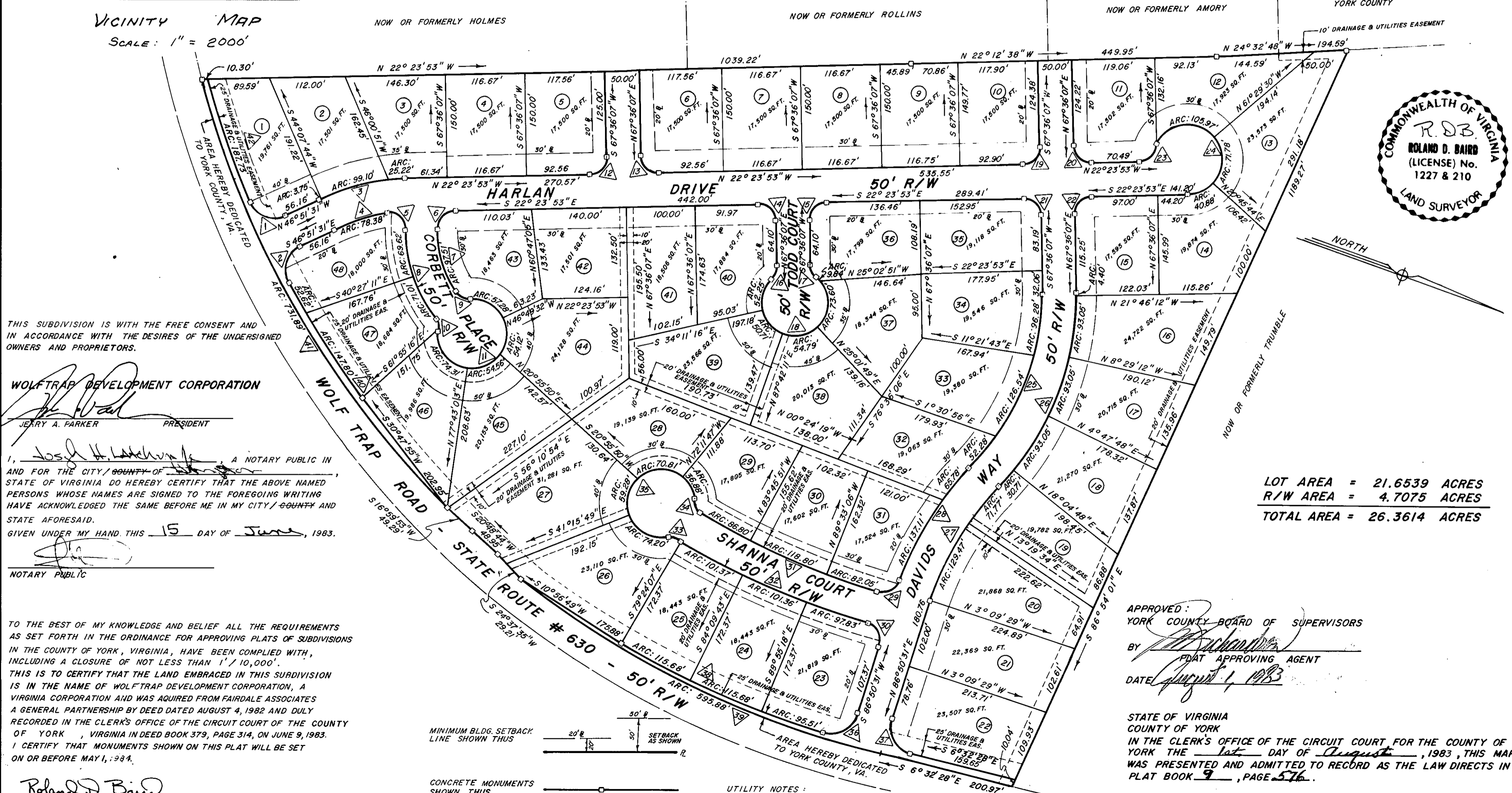


NO.	DELTA	RADIUS	ARC	TAN.	CHORD	CHORD BEARING	NO.	DELTA	RADIUS	ARC	TAN.	CHORD	CHORD BEARING
1	92°45'16"	40.00	64.75	41.97	57.91	N 00° 28' 53" W	22	90°00'00"	25.00	39.27	25.00	35.36	N 67° 23' 53" W
2	92°45'16"	40.00	64.75	41.97	57.91	S 86° 45' 51" W	23	70°31'44"	25.00	30.77	17.68	28.87	N 57° 39' 45" W
3	24°27'38"	300.00	128.07	65.03	127.10	N 34° 37' 42" W	24	250°31'44"	50.00	218.63			
4	18°00'32"	250.00	78.58	39.62	78.25	N 37° 51' 15" W	25	44°51'46"	351.34	275.10	145.04	268.13	N 89° 58' 00" W
5	96°07'30"	25.00	41.94	27.83	37.19	N 19° 12' 46" W	26	44°51'46"	401.34	314.26	165.68	306.28	S 89° 58' 00" E
6	90°00'00"	25.00	39.27	25.00	35.36	N 67° 23' 53" W	27	25°37'22"	450.00	201.24	102.33	199.57	N 80° 20' 48" W
7	31°55'34"	175.00	97.51	50.06	96.26	N 51° 38' 20" E	28	23°14'58"	500.00	202.89	102.86	201.50	N 79° 09' 36" W
8	35°48'41"	225.00	140.63	72.70	138.35	N 49° 22' 11" E	29	87°12'57"	25.00	38.06	23.81	34.49	S 47° 10' 37" E
9	58°08'41"	25.00	25.37	13.90	24.30	N 6° 36' 13" E	30	90°21'26"	25.00	39.43	25.16	35.47	N 41° 39' 48" E
10	41°24'36"	25.00	18.07	9.45	17.67	N 52° 10' 08" E	31	14°03'18"	1170.15	287.04	144.25	286.32	S 3° 27' 30" W
11	275°20'32"	50.00	240.27				32	14°06'48"	1220.15	300.56	151.04	299.80	N 3° 32' 29" E
12	90°00'00"	25.00	39.27	25.00	35.36	N 67° 23' 53" W	33	46°53'25"	25.00	20.46	10.84	19.89	N 12° 50' 49" W
13	90°00'00"	25.00	39.27	25.00	35.36	N 22° 36' 07" E	34	49°34'24"	25.00	21.63	11.55	20.96	S 35° 16' 21" W
14	90°00'00"	25.00	39.27	25.00	35.36	N 22° 36' 07" E	35	276°21'05"	50.00	241.16			
15	90°00'00"	25.00	39.27	25.00	35.36	N 67° 23' 53" W	36	90°18'24"	40.00	63.05	40.22	56.72	S 48° 00' 17" E
16	48°11'23"	25.00	21.03	11.18	20.41	S 88° 18' 12" E	37	93°22'59"	40.00	65.19	42.43	58.21	S 40° 09' 02" W
17	48°11'23"	25.00	21.03	11.18	20.41	N 43° 30' 26" E	38	13°26'57"	1392.52	326.87	164.19	326.12	S 3° 52' 23" W
18	276°22'46"	50.00	241.19				39	24°20'35"	1402.52	595.88	302.51	591.41	S 5° 37' 49" W
19	90°00'00"	25.00	39.27	25.00	35.36	N 67° 23' 53" W	40	6°14'47"	1392.52	200.42	100.38	200.25	S 36° 15' 49" W
20	90°00'00"	25.00	39.27	25.00	35.36	N 22° 36' 07" E	41	29°53'57"	1402.52	731.89	374.48	723.61	S 38° 46' 21" W
21	90°00'00"	25.00	39.27	25.00	35.36	N 22° 36' 07" E	42	7°43'28"	1392.52	187.73	94.01	187.59	S 49° 45' 29" W

WOLFTRAP ESTATES
 GRAFTON DISTRICT
 COUNTY OF YORK, VIRGINIA
 SCALE: 1" = 100' DATE: JULY 23, 1982
 E. J. KELLER, INC.
 LAND SURVEYOR
 NEWPORT NEWS, VA.

VICINITY MAP
 SCALE: 1" = 2000'



THIS SUBDIVISION IS WITH THE FREE CONSENT AND IN ACCORDANCE WITH THE DESIRES OF THE UNDERSIGNED OWNERS AND PROPRIETORS.

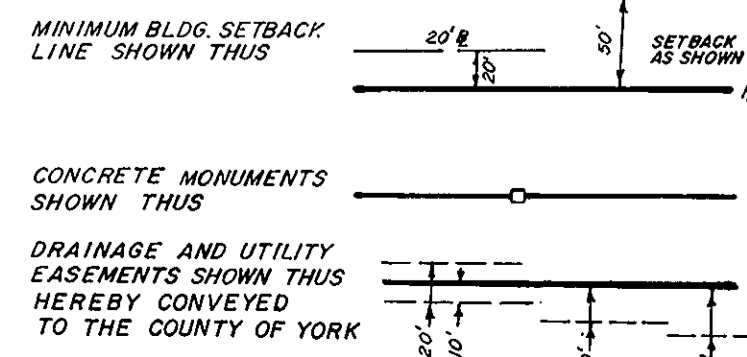
WOLFTRAP DEVELOPMENT CORPORATION
 JERRY A. PARKER, PRESIDENT

I, José H. Lanchón, A NOTARY PUBLIC IN AND FOR THE CITY/COUNTY OF NEWPORT NEWS, STATE OF VIRGINIA DO HEREBY CERTIFY THAT THE ABOVE NAMED PERSONS WHOSE NAMES ARE SIGNED TO THE FOREGOING WRITING HAVE ACKNOWLEDGED THE SAME BEFORE ME IN MY CITY/COUNTY AND STATE AFORESAID.
 GIVEN UNDER MY HAND THIS 15 DAY OF June, 1983.

NOTARY PUBLIC

TO THE BEST OF MY KNOWLEDGE AND BELIEF ALL THE REQUIREMENTS AS SET FORTH IN THE ORDINANCE FOR APPROVING PLATS OF SUBDIVISIONS IN THE COUNTY OF YORK, VIRGINIA, HAVE BEEN COMPLIED WITH, INCLUDING A CLOSURE OF NOT LESS THAN 1"/10,000'. THIS IS TO CERTIFY THAT THE LAND EMBRACED IN THIS SUBDIVISION IS IN THE NAME OF WOLFTRAP DEVELOPMENT CORPORATION, A VIRGINIA CORPORATION AND WAS ACQUIRED FROM FAIRDALE ASSOCIATES A GENERAL PARTNERSHIP BY DEED DATED AUGUST 4, 1982 AND DULY RECORDED IN THE CLERK'S OFFICE OF THE CIRCUIT COURT OF THE COUNTY OF YORK, VIRGINIA IN DEED BOOK 379, PAGE 314, ON JUNE 9, 1983. I CERTIFY THAT MONUMENTS SHOWN ON THIS PLAT WILL BE SET ON OR BEFORE MAY 1, 1984.

Roland D. Baird
 ROLAND D. BAIRD, LS



UTILITY NOTES:
 WATER: EACH LOT WITHIN THIS SUBDIVISION IS SERVED BY PUBLIC WATER PROVIDED BY CITY OF NEWPORT NEWS.
 SEWER: EACH LOT WITHIN THIS SUBDIVISION IS SERVED BY PUBLIC SEWER PROVIDED BY COUNTY OF YORK & H.R.S.D.

LOT AREA = 21.6539 ACRES
 R/W AREA = 4.7075 ACRES
 TOTAL AREA = 26.3614 ACRES

APPROVED:
 YORK COUNTY BOARD OF SUPERVISORS
 BY [Signature]
 PLAT APPROVING AGENT
 DATE August 1, 1983

STATE OF VIRGINIA
 COUNTY OF YORK
 IN THE CLERK'S OFFICE OF THE CIRCUIT COURT FOR THE COUNTY OF YORK THE 1st DAY OF August, 1983, THIS MAP WAS PRESENTED AND ADMITTED TO RECORD AS THE LAW DIRECTS IN PLAT BOOK 9, PAGE 576.

TESTE: Edith M. Elliott
 CLERK
 BY: Barbara Borge